



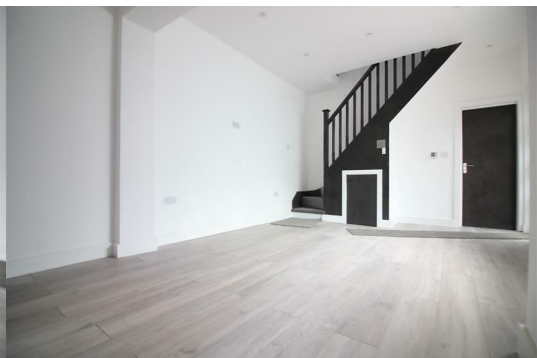
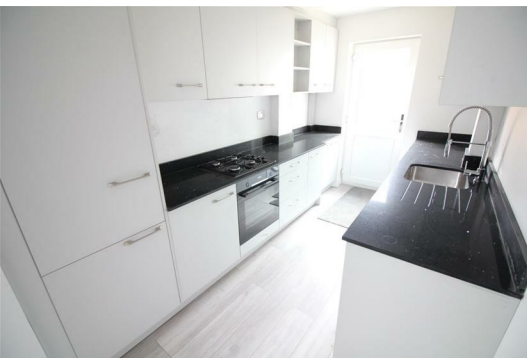
10 Windmill Road

Slough, SL1 3SU

£1,745 Per month



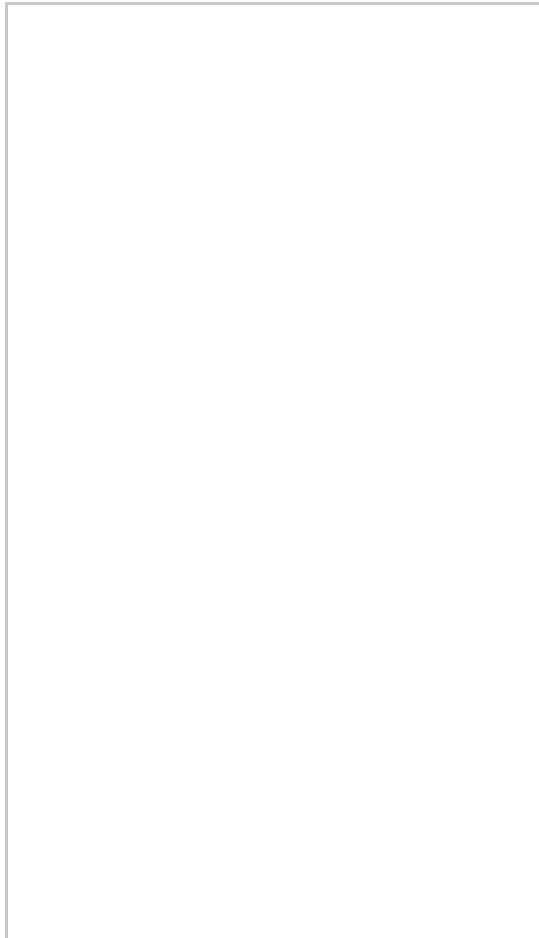
Stunning, completely refurbished, brand new five double bedroom and three bathroom house to rent with a private garden, parking, lots of storage space and close to local buses, shops, parks and amenities. Suitable for a large family or sharers, available to view now.



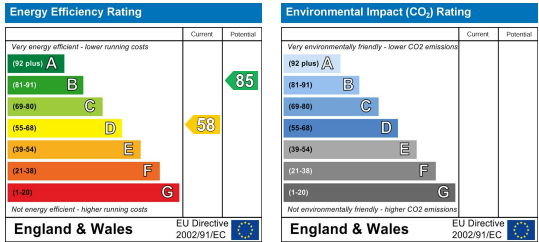
Area Map



Floor Plans



Energy Efficiency Graph



These particulars, whilst believed to be accurate are set out as a general outline only for guidance and do not constitute any part of an offer or contract. Intending purchasers should not rely on them as statements of representation of fact, but must satisfy themselves by inspection or otherwise as to their accuracy. No person in this firm's employment has the authority to make or give any representation or warranty in respect of the property.