



# RIDGEWAY

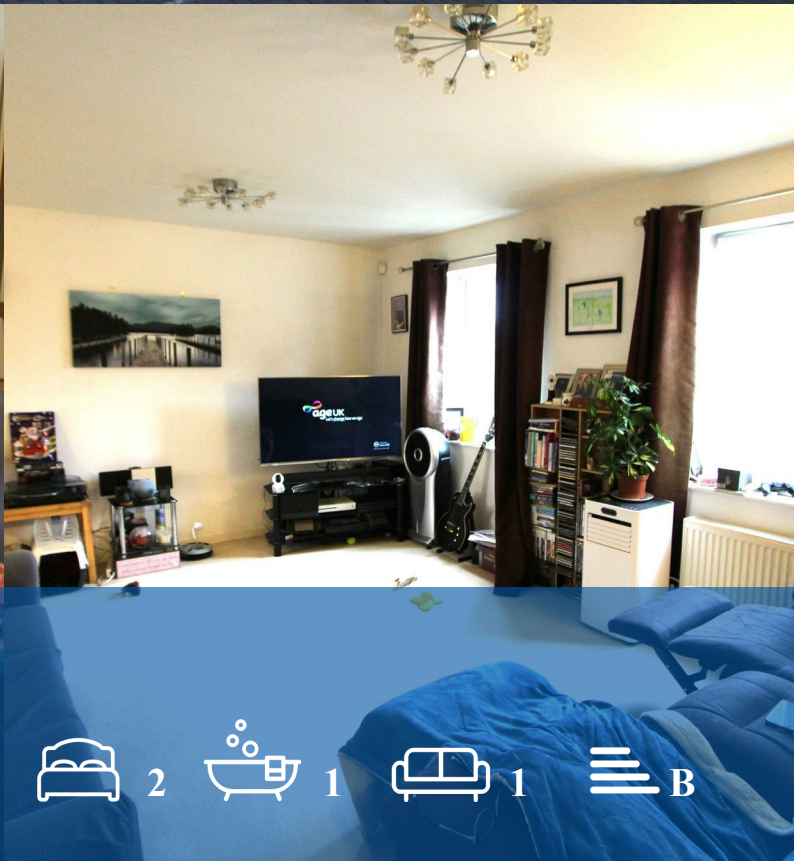
## RESIDENTIAL SERVICES



**Chaise meadow**

, Lymm, WA13 9UP

**£160,000**



2 1 1 B



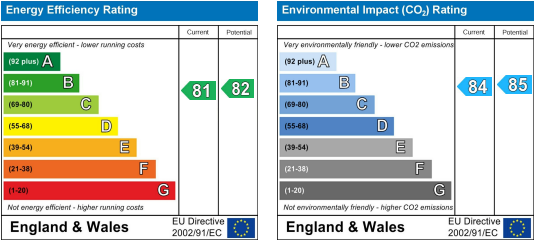
Floor Plan



Area Map



Energy Efficiency Graph



Viewing

Please contact us on 01925 756931 if you wish to arrange a viewing appointment for this property or require further information.

- Spacious 2 Bed First Floor ■ Viewing Essential Apartment
- 4 Piece Bathroom Suite ■ Great Location
- Gas Central Heating ■ Double Glazed
- Open Plan Lounge/Kitchen ■ Allocated Parking Space

This delightful first-floor apartment offers a perfect blend of comfort and convenience. With two well-proportioned bedrooms, this purpose-built flat is ideal for individuals, couples, or small families seeking a tranquil yet accessible living space.

Lymm is renowned for its picturesque surroundings and vibrant community. Residents can enjoy a variety of local amenities, including shops, cafes, and parks, all within easy reach. The area is well-connected, making it convenient for commuting to nearby towns and cities.

This first-floor apartment presents an excellent opportunity for those looking to embrace a comfortable lifestyle in a sought-after location. With its appealing features and proximity to local conveniences, this property is not to be missed. Whether you are a first-time buyer or seeking a rental investment, this flat in Lymm is sure to impress.



These particulars, whilst believed to be accurate are set out as a general outline only for guidance and do not constitute any part of an offer or contract. Intending purchasers should not rely on them as statements of representation of fact, but must satisfy themselves by inspection or otherwise as to their accuracy. No person in this firms employment has the authority to make or give any representation or warranty in respect of the property.