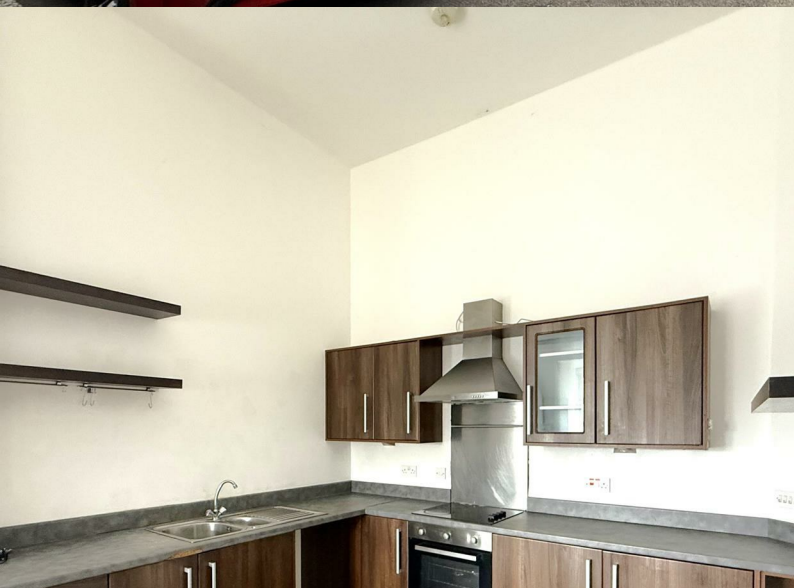




RIDGEWAY

RESIDENTIAL SERVICES



Apartment, 6 Church Mews

, Prestwich, M25 3FG

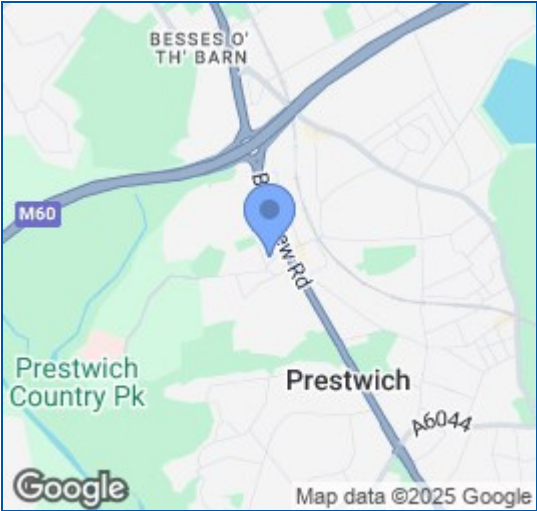
£155,000



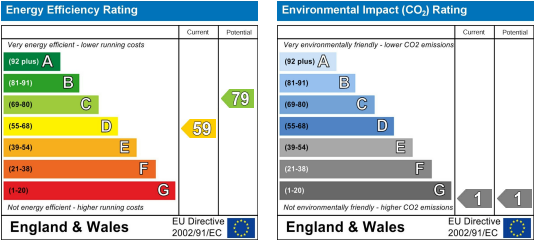
Floor Plan



Area Map



Energy Efficiency Graph



Viewing

Please contact us on 01925 756931 if you wish to arrange a viewing appointment for this property or require further information.

- First Floor Modern Apartment
- Two Bedrooms
- Allocated Parking
- Sought After Location
- No Onward Chain
- Open Plan Living Kitchen Area
- Bathroom
- Viewing Highly Recommended
- Unfurnished

Church Mews, Prestwich, this delightful apartment offers a perfect blend of modern living and comfort. Built between 2000 and 2009, the property boasts a contemporary design that is both stylish and functional.

Upon entering, you are welcomed into a spacious reception room, ideal for relaxation. The apartment features two well-proportioned bedrooms, providing ample space for rest and personalisation. The bathroom is thoughtfully designed, ensuring convenience and comfort for all residents.

One of the standout features of this property is the dedicated parking space for one vehicle, a valuable asset in this bustling area. The location itself is a significant draw, with easy access to local amenities, parks, and excellent transport links, making it an ideal choice for both professionals and families alike.

This apartment in Church Mews is not just a place to live; it is a home that offers a wonderful lifestyle in a vibrant community. This property presents an excellent opportunity to enjoy modern living in a sought-after location.



These particulars, whilst believed to be accurate are set out as a general outline only for guidance and do not constitute any part of an offer or contract. Intending purchasers should not rely on them as statements of representation of fact, but must satisfy themselves by inspection or otherwise as to their accuracy. No person in this firm's employment has the authority to make or give any representation or warranty in respect of the property.