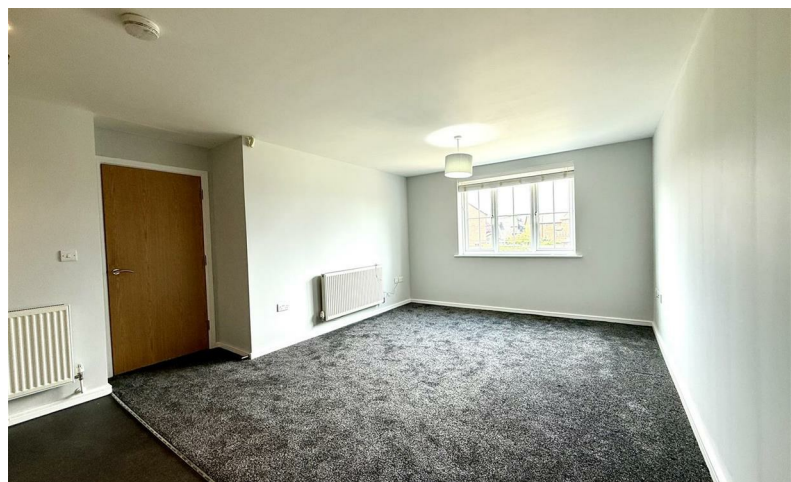




# RIDGEWAY

## RESIDENTIAL SERVICES



**£875 PCM**

Flat 3 Chaise Meadow, Lymm, Cheshire, WA13 9NX

# Flat 3 Chaise Meadow, Lymm, Cheshire, WA13 9NX

This apartment is part of a development in Heatley which is close to Lymm village. The property comprises of an entrance hall with utility cupboard housing washing machine. There is a large, open plan living room with built in kitchen with hob, electric oven and separate fridge and freezer. There are 2 bedrooms and a bathroom with shower above. Gas central heating and double glazed. Allocated Parking. Unfurnished. Available: Immediately.

## Information

- Water Mains Supply
- Electricity Mains Supply
- Gas Mains Supply
- Sewerage Mains Supply
- Central Heating Gas

- Internet connection
- Cable

Internet Speed Between 5-1139MPS

- Mobile Coverage
- EE Average
- Vodafone Average
- Three Poor
- 02 Average

## Credit References and Deposit

Prospective tenants will be required to complete a credit referencing application payable whether successful or not. Prior to taking occupation of the property you will be required to pay a deposit of 1½ times the monthly rent, the first months rent in advance and an administration fee.

## Directions

From our office turn left passing over the Bridgewater canal into Rushgreen Road continue along for 1.5 miles and at the second roundabout turn right and the property will be found on the right hand side.

