



## 17 Ramson Rise

Hemel Hempstead, HP1 2DG

**£235,000**

Step into modern convenience with this well-presented one-bedroom first floor maisonette, perfectly blending comfort and practicality. Set in good condition throughout, this home offers a bright and welcoming living space, ideal for professionals, first-time buyers, or commuters who want a place to unwind after a busy day.

Enjoy the ease of your own parking space and the luxury of being just a short walk from Hemel Hempstead train station, connecting you effortlessly to London and beyond. Whether you're grabbing a coffee before your commute or exploring the nearby shops, restaurants, and green spaces, you'll love the lifestyle this location brings.

A home that's ready to move into, with everything you need for low-maintenance, modern living.

### Viewing

Please contact our Bovingdon Office on 01923262666 if you wish to arrange a viewing appointment for this property or require further information.

- One Bedroom First Floor Maisonette
- Maintained To A High Standard
- Long Lease And Low Fees
- Allocated Parking Space
- Hemel Hempstead Train Station 1.5km
- Excellent For Commuters Into London
- Ideal For FTB, Commuters and Investors
- Book Your Viewing Today!



1



1

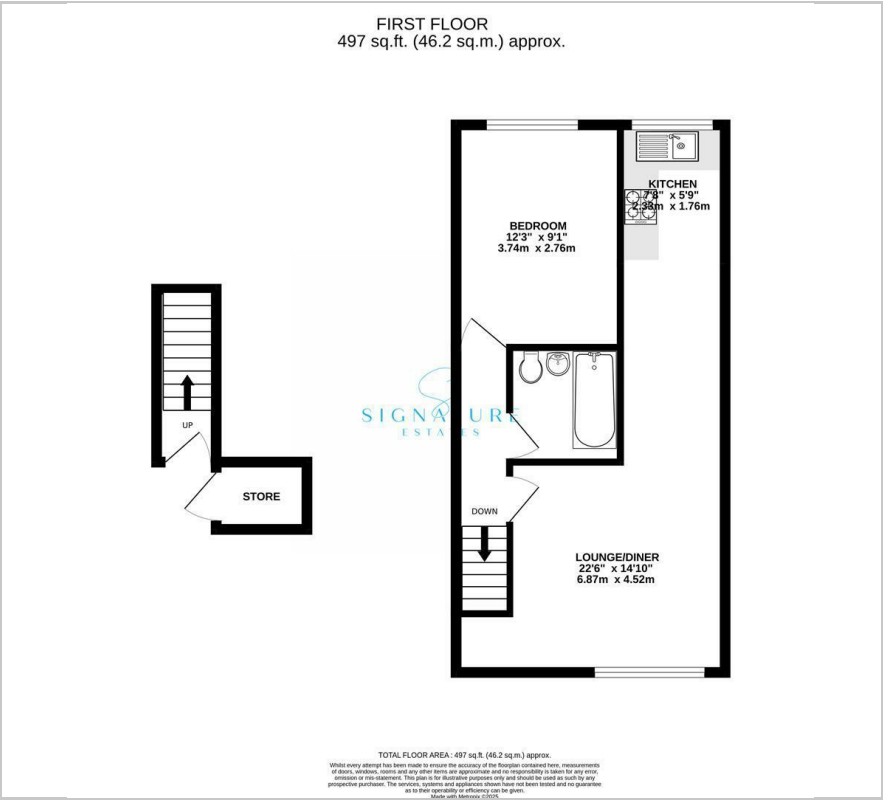


1



C

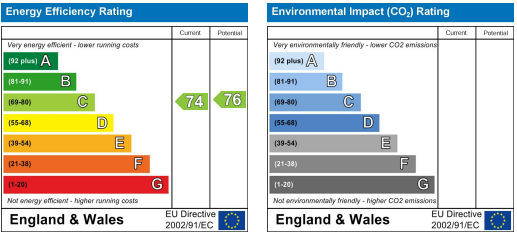
Floor Plan



Area Map



Energy Efficiency Graph



These particulars, whilst believed to be accurate are set out as a general outline only for guidance and do not constitute any part of an offer or contract. Intending purchasers should not rely on them as statements of representation of fact, but must satisfy themselves by inspection or otherwise as to their accuracy. No person in this firm's employment has the authority to make or give any representation or warranty in respect of the property.