



SIGNATURE

Flat 5 28 Loates Lane

Watford, WD17 2PE

£1,700

Newly Refurbished 2-Bedroom, 2-Bathroom Apartment – Prime Town Centre Location

Signature Estates is delighted to present this newly refurbished two-bedroom, two-bathroom apartment, ideally situated in the heart of the town centre.

The property features a bright and spacious open-plan living room and modern fitted kitchen, two well-proportioned double bedrooms with built-in storage, and two contemporary bathrooms, one of which includes a shower.

Conveniently located within walking distance of Watford Junction Station and Watford High Street Station, the apartment also benefits from gas central heating, double glazing throughout, and access to a small communal courtyard garden.

Please note: There is no parking available with this property.

Viewing

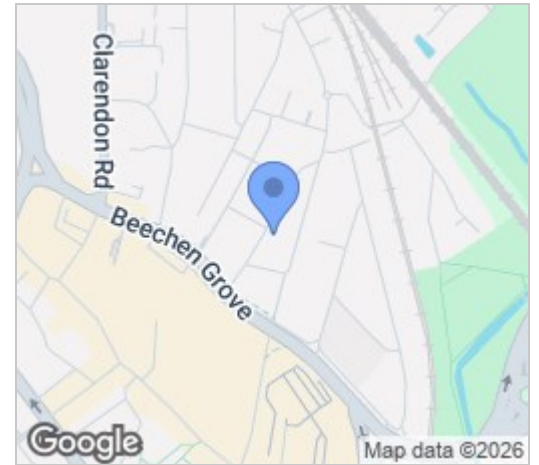
Please contact our Watford Office on 01923224030 if you wish to arrange a viewing appointment for this property or require further information.



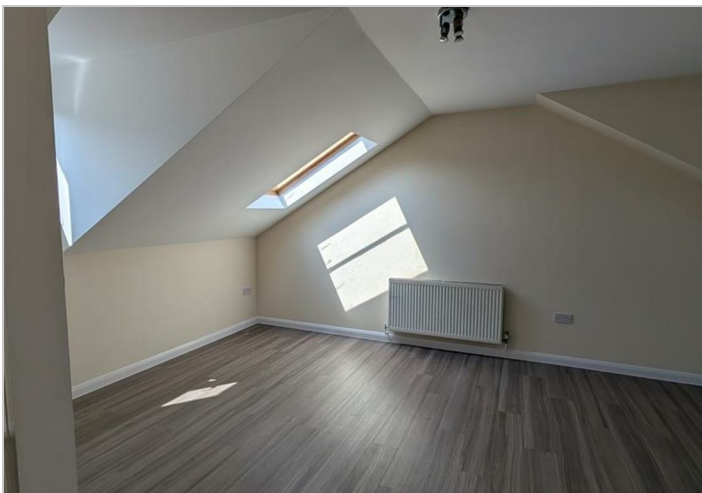
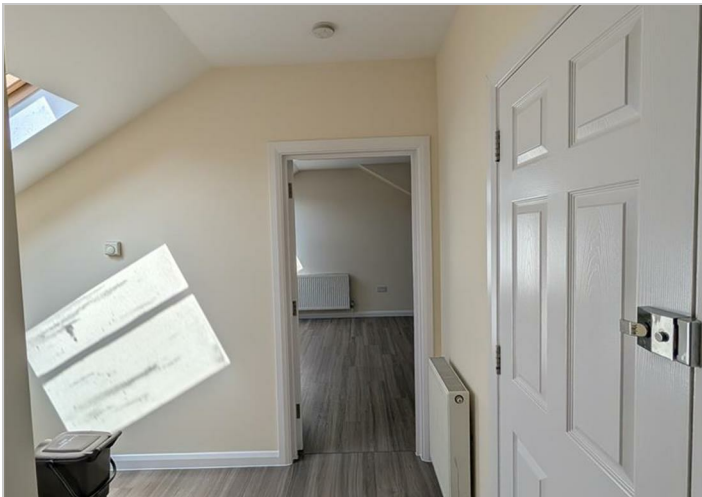
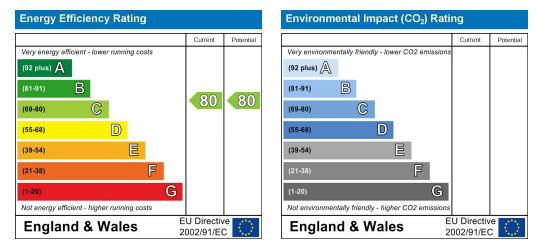
Floor Plan



Area Map



Energy Efficiency Graph



These particulars, whilst believed to be accurate are set out as a general outline only for guidance and do not constitute any part of an offer or contract. Intending purchasers should not rely on them as statements of representation of fact, but must satisfy themselves by inspection or otherwise as to their accuracy. No person in this firm's employment has the authority to make or give any representation or warranty in respect of the property.