



SIGNATURE
ESTATES

Flat 4 Beaconsfield Court

Watford, WD25 7JJ

£1,300 Per Month

BEACON OF LIGHT!! Delight your senses in this beautiful one bedroom flat. The Lounge is serene and calm, with space for a dining table or home work space, leading to a separate modern kitchen, with fitted appliances and plenty of storage. The bedroom is light and airy with fitted wardrobes. Being close to local schools, local amenities and fantastic transport links this is a sure winner! Book your viewing today.

- One Large Double Bedroom
- Unfurnished
- Ample Living Space
- One Allocated Parking Space
- Communal Garden
- First Floor
- Close To Local Schools
- Shops Short Walk Away
- Security deposit £1500
- Available for June Move In

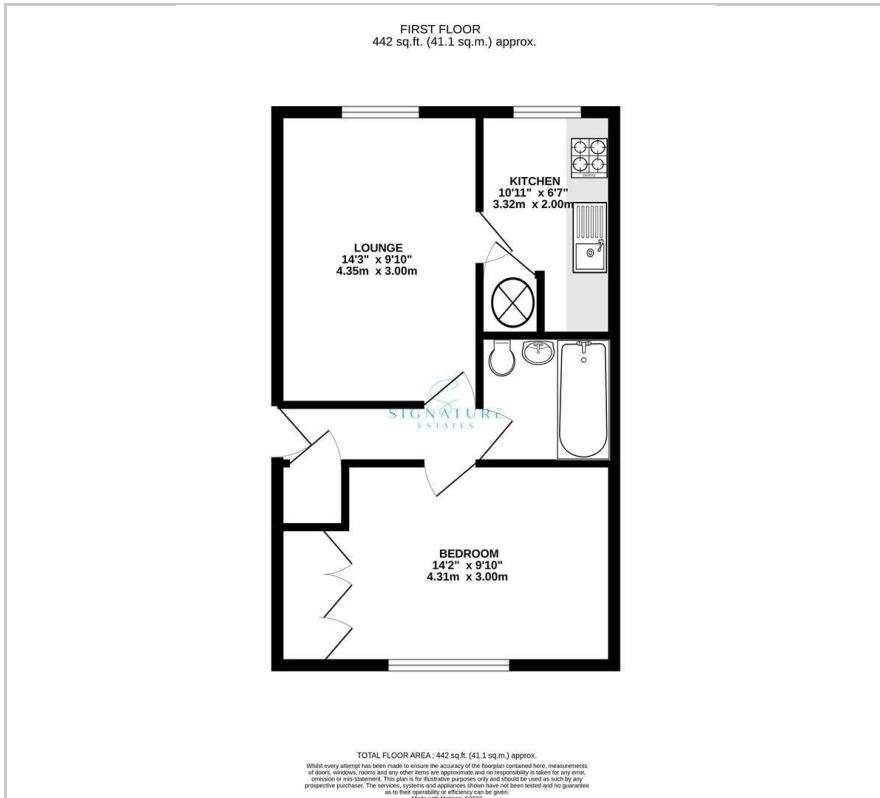
Viewing

Please contact our Watford Office on 01923224030 if you wish to arrange a viewing appointment for this property or require further information.

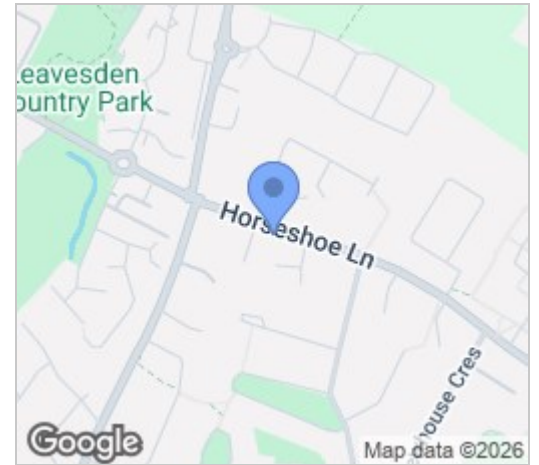
SIGNATURE
ESTATES



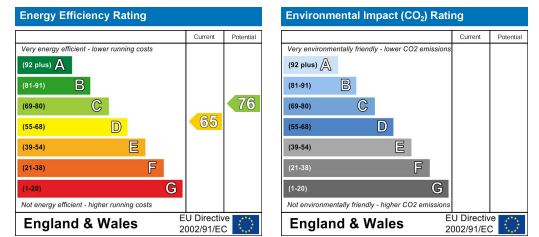
Floor Plan



Area Map



Energy Efficiency Graph



These particulars, whilst believed to be accurate are set out as a general outline only for guidance and do not constitute any part of an offer or contract. Intending purchasers should not rely on them as statements of representation of fact, but must satisfy themselves by inspection or otherwise as to their accuracy. No person in this firm's employment has the authority to make or give any representation or warranty in respect of the property.

64a Queens Road, Watford, Hertfordshire, WD17 2LA

T: 01923224030 | E: info@signatureestates.co.uk | www.signatureestates.co.uk