



132a Gosforth Lane

Watford, WD19 7BX

£2,100

A charming three-bedroom detached family home in South Oxhey, offering off-street parking and a low-maintenance garden – perfect for busy family life. Ideally located just a short walk from Carpenders Park train station, providing easy access to central London.

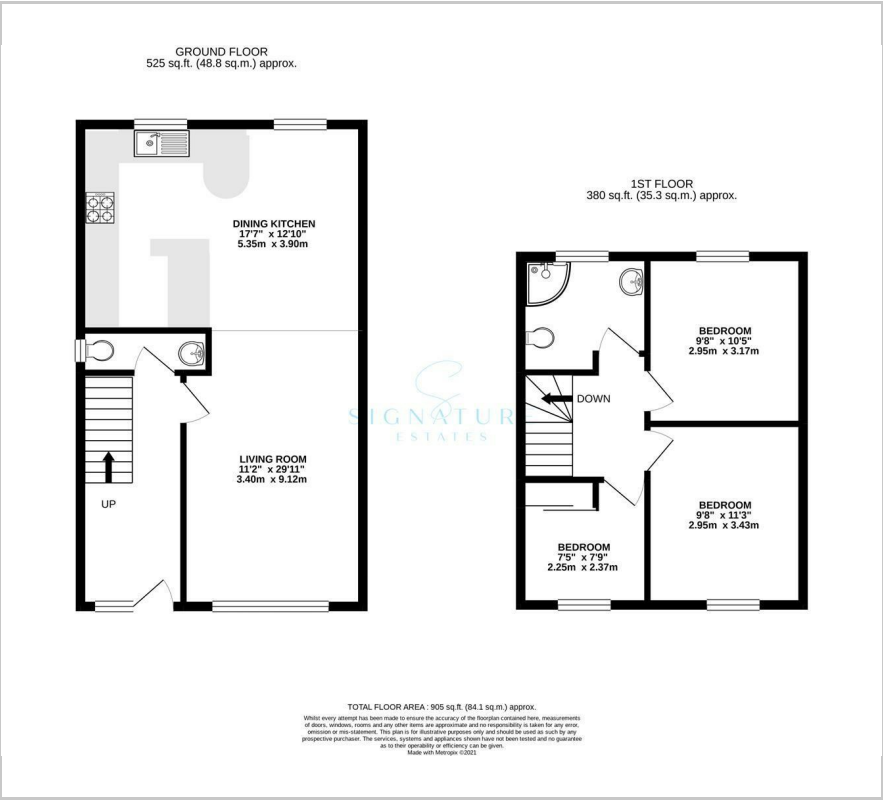
- Three Bedroom Detached House
- Open Plan Living Space
- Good Size Kitchen
- Low Maintenance Garden
- Sleek Modern Bathroom
- Double Driveway
- Solar Panels (cheaper bills!)
- Available Immediately

Viewing

Please contact our Watford Office on 01923224030 if you wish to arrange a viewing appointment for this property or require further information.



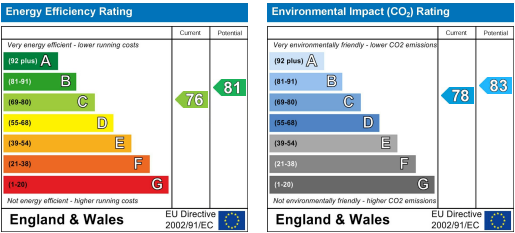
Floor Plan



Area Map



Energy Efficiency Graph



These particulars, whilst believed to be accurate are set out as a general outline only for guidance and do not constitute any part of an offer or contract. Intending purchasers should not rely on them as statements of representation of fact, but must satisfy themselves by inspection or otherwise as to their accuracy. No person in this firm's employment has the authority to make or give any representation or warranty in respect of the property.