



94 Ebury Road

Watford, WD17 2SB

Asking Price £260,000

Nestled in the desirable area of Ebury Road, Watford, this charming ground floor maisonette presents an excellent opportunity for first-time buyers. The property boasts a well-appointed reception room that offers a welcoming space for relaxation and entertainment. With one spacious bedroom, it provides a comfortable retreat for rest and rejuvenation. The bathroom is thoughtfully designed, ensuring convenience and functionality.

This purpose-built maisonette is extremely well presented, showcasing modern finishes and a warm ambiance throughout. The property benefits from parking for one vehicle, a valuable asset in this sought-after location. Residents will appreciate the proximity to Watford Junction Station, making commuting and travel exceptionally convenient.

Whether you are looking to step onto the property ladder or seeking a delightful home in a vibrant community, this maisonette is an ideal choice. With its appealing features and prime location, it is sure to attract interest. Do not miss the chance to make this lovely flat your new home.

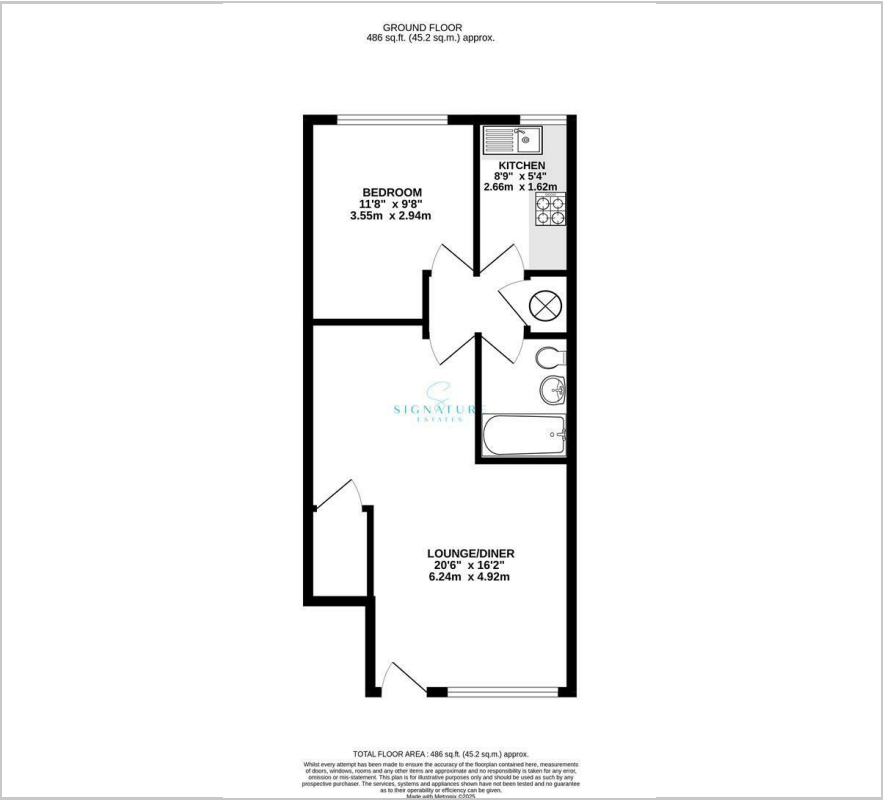
- Ground Floor Maisonette
- One Double Bedroom
- Beautifully Presented
- Allocated Parking Space
- Close To Town Centre
- Close To Watford Junction Station
- Sought After Location
- Ideal First Time Buy
- **BOOK A VIEWING TODAY!**

Viewing

Please contact our Watford Office on 01923224030 if you wish to arrange a viewing appointment for this property or require further information.



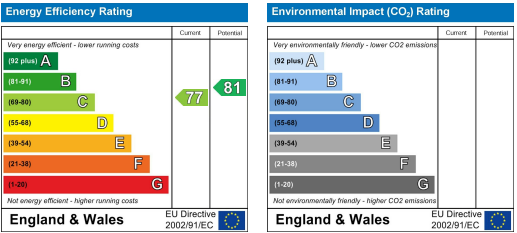
Floor Plan



Area Map



Energy Efficiency Graph



These particulars, whilst believed to be accurate are set out as a general outline only for guidance and do not constitute any part of an offer or contract. Intending purchasers should not rely on them as statements of representation of fact, but must satisfy themselves by inspection or otherwise as to their accuracy. No person in this firms employment has the authority to make or give any representation or warranty in respect of the property.