



26 Follet Drive

Abbots Langley, WD5 0LP

Asking Price £580,000

Extended three-bedroom semi-detached family home located on Follet Drive in the desirable area of Abbots Langley. Spanning an impressive 1,266 square feet, this property offers ample space for family living and entertaining.

As you enter, you will find two inviting reception rooms that provide a perfect setting for relaxation and social gatherings. The layout is both practical and versatile, allowing for a variety of uses to suit your lifestyle. The well-proportioned bedrooms offer comfortable accommodation, making this home ideal for families or those looking for extra space.

The property features a mature and well looked after rear garden, a well-appointed bathroom, ensuring convenience for all residents. Additionally, the driveway provides parking for three vehicles, a valuable asset in this sought-after location.

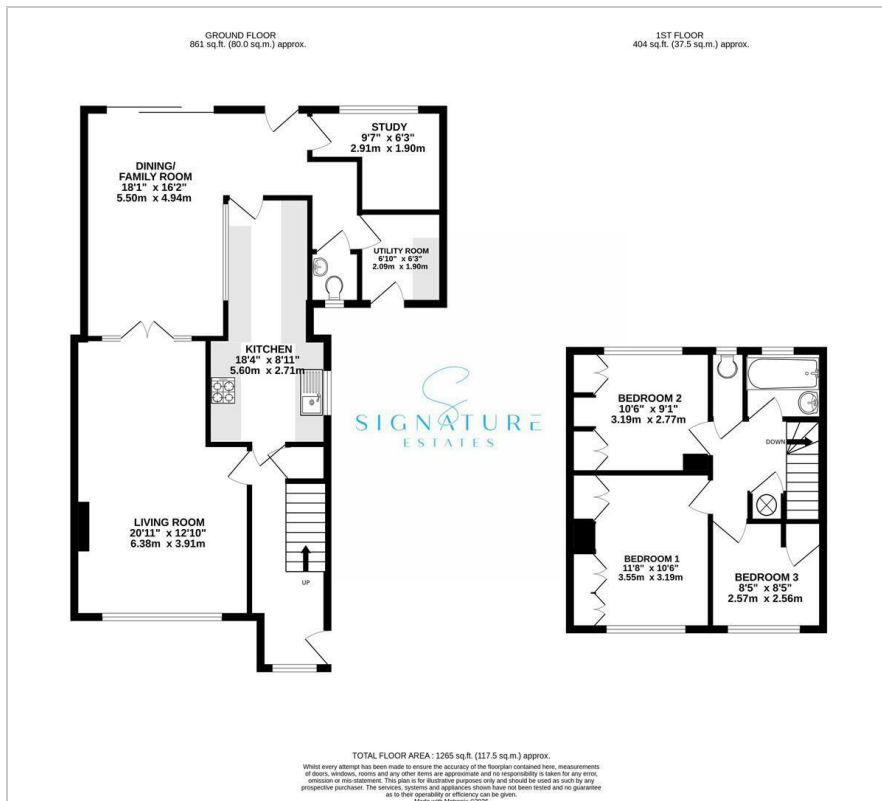
- Semi Detached Family Home
- Three Bedrooms
- Extended
- Popular And Sought After Location
- Close To Village And Amenities
- Driveway
- Attractive Rear Garden
- Viewing By Appointment Only!

Viewing

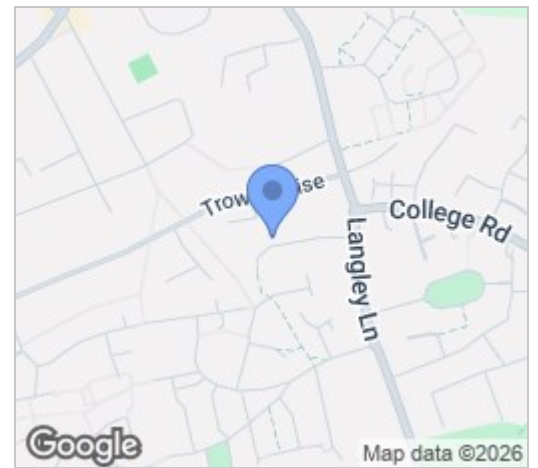
Please contact our Abbots Langley Office on 01923262666 if you wish to arrange a viewing appointment for this property or require further information.



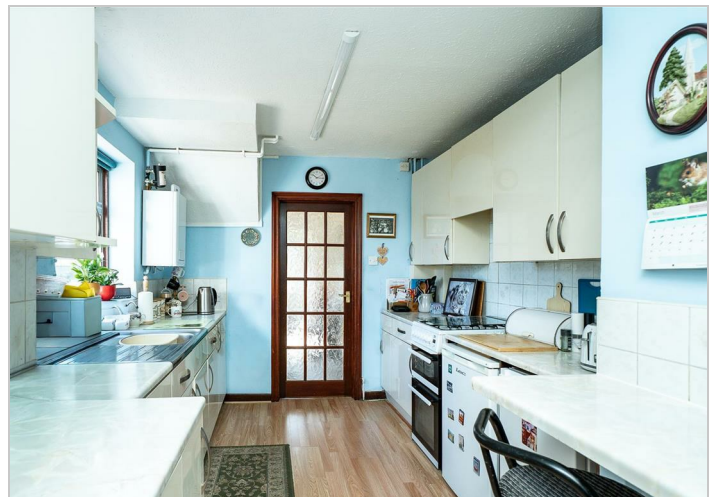
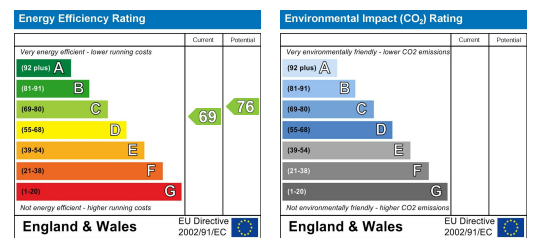
Floor Plan



Area Map



Energy Efficiency Graph



These particulars, whilst believed to be accurate are set out as a general outline only for guidance and do not constitute any part of an offer or contract. Intending purchasers should not rely on them as statements of representation of fact, but must satisfy themselves by inspection or otherwise as to their accuracy. No person in this firm's employment has the authority to make or give any representation or warranty in respect of the property.