



9 Louvain Way Watford, WD25 7EH Offers Over £475,000

Charming 3-Bedroom Period End-Terrace Cottage

This delightful character cottage beautifully blends period charm with modern living, offering generous and versatile accommodation set across three floors.

Tastefully extended, the home boasts a welcoming living space filled with warmth and character, alongside a stylishly designed kitchen that serves as the heart of the house. A bright conservatory opens onto the garden, creating a perfect spot for relaxation or entertaining.

Upstairs, three well-proportioned bedrooms are arranged across the first and second floors, providing ample space for family or guests. The thoughtful loft extension enhances both practicality and comfort, while retaining the original charm of this period home. An en-suite to the master is a very nice surprise.

As an end-terrace, the property enjoys side access and the extra sense of privacy and light, making it a rare find for those seeking a characterful home with modern appeal.

Viewing

Please contact our Abbots Langley Office on 01923262666 if you wish to arrange a viewing appointment for this property or require further information.

- Outstanding Large Extended 3 Bed Character Period Cottage
- ** Chain Free**
- Super Decorative Order Over 3 Floors
- Set in Established Residential Road
- 3 Double Bedrooms & 3 Bathrooms
- Shaker Kitchen and Conservatory
- Large Easy Keep Garden
- Easy Access to Schools and Commuter Links
- Side Access
- Book Your View!



3



3

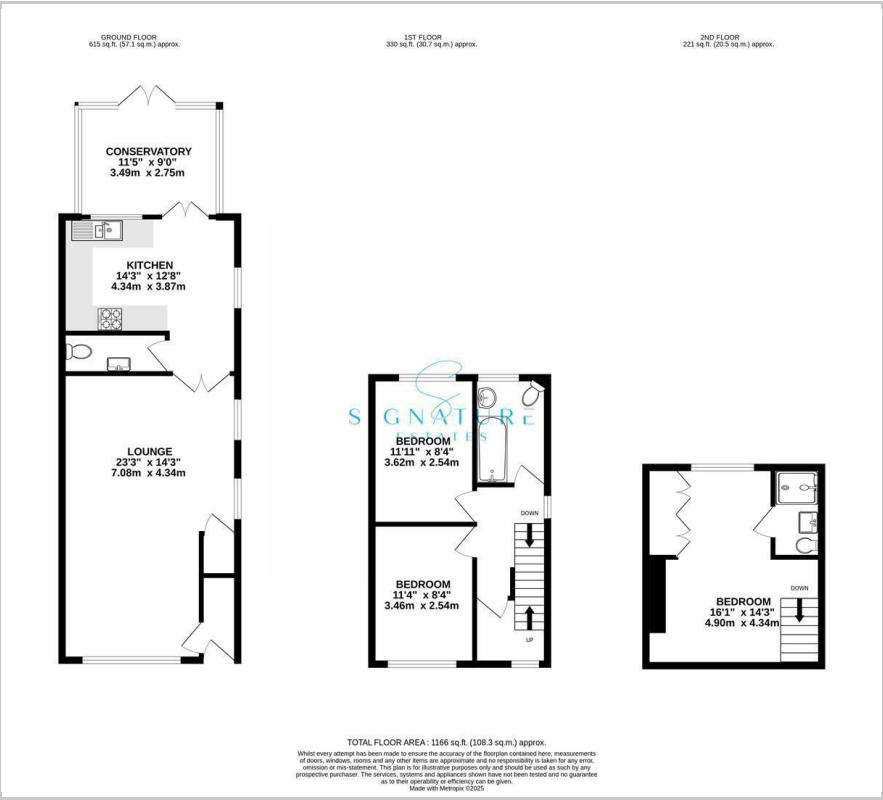


2



D

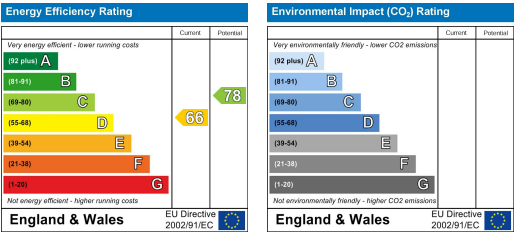
Floor Plan



Area Map



Energy Efficiency Graph



These particulars, whilst believed to be accurate are set out as a general outline only for guidance and do not constitute any part of an offer or contract. Intending purchasers should not rely on them as statements of representation of fact, but must satisfy themselves by inspection or otherwise as to their accuracy. No person in this firms employment has the authority to make or give any representation or warranty in respect of the property.