



## 26 Tanners Hill

ABBOTS LANGLEY, WD5 0LT

**Asking Price £425,000**

Delightful End-of-Terrace 2 Bed Home in Abbots Langley – No Upper Chain

Situated in the charming village of Abbots Langley, Tanners Hill offers a fantastic opportunity to own a beautifully maintained end-of-terrace home on a desirable and quiet street.

This lovely property features two generously sized bedrooms, a nicely fitted kitchen, and a modern, well-appointed bathroom—ideal for couples, small families, or anyone looking for a peaceful and stylish retreat.

Just a short walk from the vibrant village centre, you'll enjoy easy access to a variety of local shops, cosy cafes, and everyday amenities, all while tucked away in a tranquil neighbourhood setting.

Offered with no upper chain, this home allows for a smooth, stress-free purchase—perfect for first-time buyers, downsizers, or those looking for a prompt move.

Don't miss your chance to own this charming home in the heart of Abbots Langley.

### Viewing

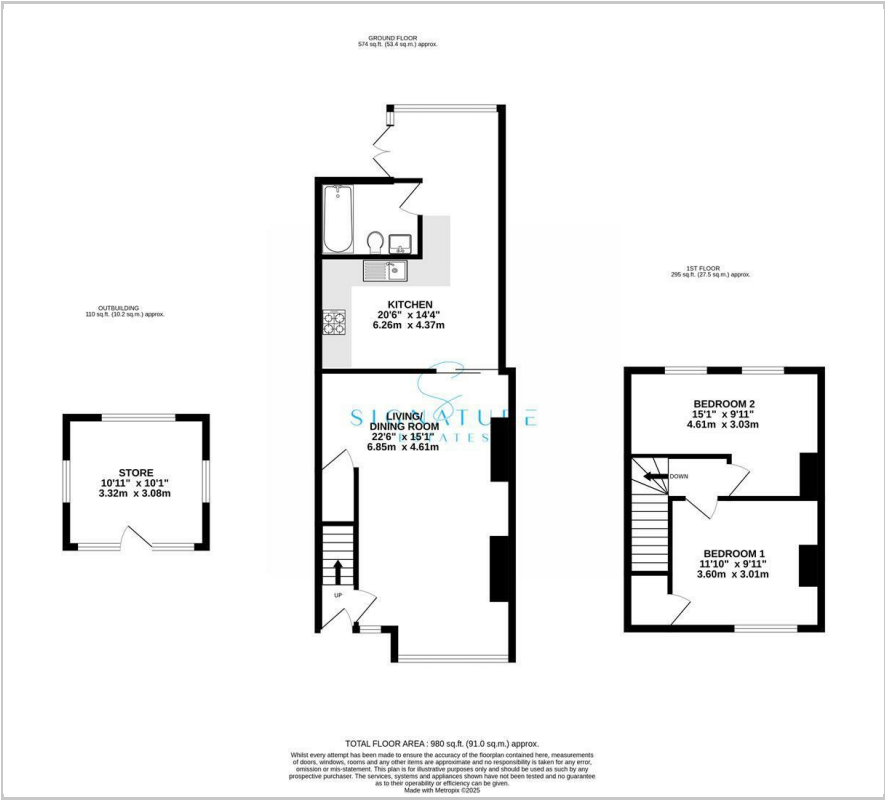
Please contact our Abbots Langley Office on 01923262666 if you wish to arrange a viewing appointment for this property or require further information.

- **\*\*No Upper Chain\*\***
- **2 Generous Sized Bedrooms**
- **Nicely Presented Throughout**
- **Quiet Cul De Sac Location**
- **Within Easy Reach Of Abbots Langley High Street**
- **Within Easy Reach of M25 and Train Station**
- **Modern Fitted Kitchen**
- **Nicely Fitted Family Bathroom**
- **Side Access to Garden**
- **A Must See !!**





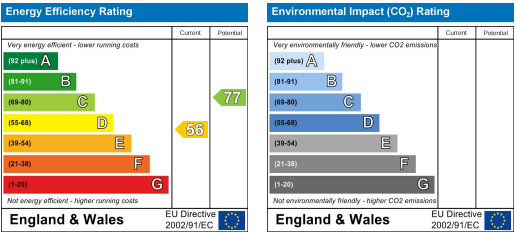
Floor Plan



Area Map



Energy Efficiency Graph



These particulars, whilst believed to be accurate are set out as a general outline only for guidance and do not constitute any part of an offer or contract. Intending purchasers should not rely on them as statements of representation of fact, but must satisfy themselves by inspection or otherwise as to their accuracy. No person in this firms employment has the authority to make or give any representation or warranty in respect of the property.