



WESTWOODLEBER
LET US GUIDE YOU HOME

High Street, Widford, Ware, SG12 8SP
Offers in excess of £325,000



High Street, Widford, Ware, SG12 8SP

Westwood Leber are delighted to bring to the market this charming Grade II Listed cottage, forming one half of the historic Netherton House.

Beautifully presented throughout, this characterful home combines period charm with practical modern living and offers well-balanced accommodation arranged over two floors.

The ground floor features a spacious kitchen/dining room, providing an ideal space for everyday family life as well as entertaining guests. A separate living room offers a bright and comfortable reception area, creating the perfect setting to relax and unwind. The layout provides a wonderful balance between open family living and more formal entertaining space.

To the first floor are two well-proportioned double bedrooms, both enjoying plenty of natural light and offering versatile accommodation for families, professionals, or those working from home. A family bathroom completes the first-floor accommodation.

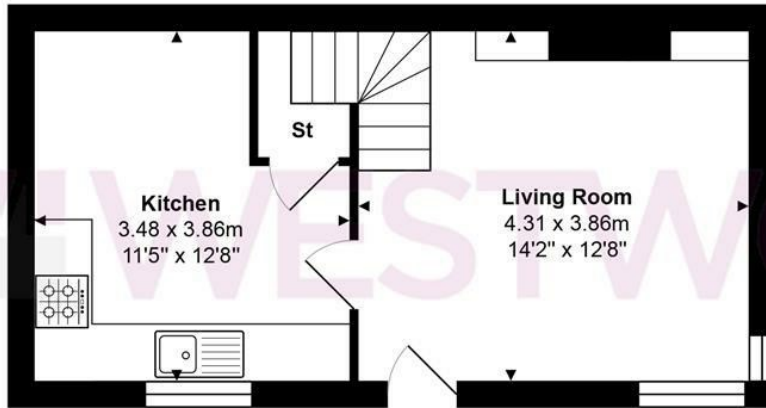
Externally, the property benefits from a private rear garden, accessed via the private road running alongside the house, providing a pleasant outdoor space for entertaining, gardening, or enjoying the peaceful surroundings. Further enhancing the appeal of the property is a double carport, offering secure off-street parking together with valuable additional storage space.

Situated within a historic setting, this unique home presents a rare opportunity to acquire a Grade II Listed property that successfully blends character, charm, and practicality. The property is ideally suited to first-time buyers, downsizers, or those seeking a distinctive home with period features in an attractive location.

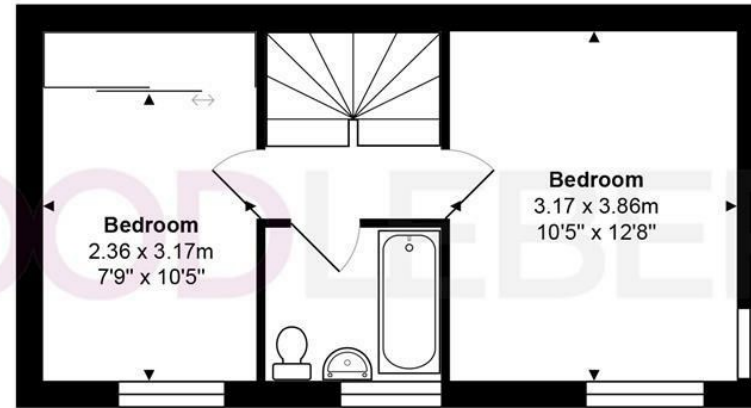


W WESTWOODLEBER

W WESTWOODLEBER
LET US GUIDE YOU HOME



Ground Floor



First Floor

Total Area: approx. 60.1 m² ... 647 ft²

THE FLOORPLAN IS FOR ILLUSTRATIVE PURPOSES ONLY AND IS NOT TO SCALE.
Measurements and features are approximate and may differ from the actual property. Verify all details independently; no liability is accepted for errors or omissions.

Property marketing provided by www.fotomarketing.co.uk





WESTWOODLEBER



WESTWOODLEBER



WESTWOODLEBER



WESTWOODLEBER





