



WV WESTWOODLEBER

WV WESTWOODLEBER
LET US GUIDE YOU HOME

Loxley Court, Ware, SG12 9FF
£335,000



Loxley Court, Ware, SG12 9FF

Westwood Leber are delighted to bring to the market this spacious and well-presented second floor two-bedroom, two-bathroom apartment, ideally situated within the highly sought-after Crane Mead development in Ware.

Offering bright and contemporary accommodation throughout, the property comprises a welcoming entrance hall leading into an impressive open-plan kitchen/living room, creating a fantastic space for both relaxing and entertaining. The modern kitchen is well appointed with ample storage and worktop space, seamlessly flowing into the generous living area.

The apartment boasts two well-proportioned double bedrooms, including a sizeable principal bedroom benefitting from its own en-suite shower room. A further modern family bathroom serves the second bedroom and guests, providing both comfort and convenience.

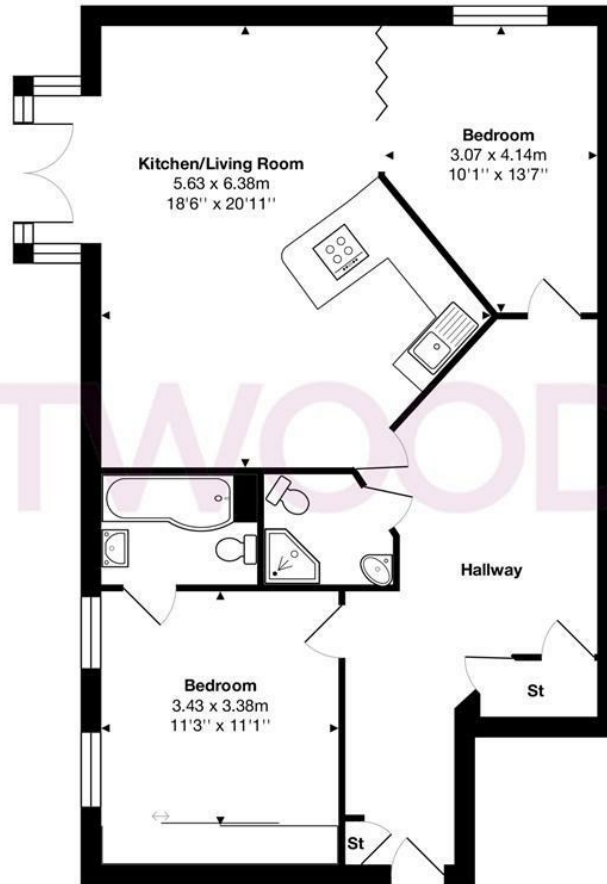
Externally, the property benefits from an allocated parking space, along with well-maintained communal grounds.

Ideally positioned within easy reach of Ware town centre, with its range of shops, restaurants and amenities, as well as excellent transport links including Ware railway station with direct access into London Liverpool Street, this fantastic apartment would make an ideal first-time purchase, investment opportunity or downsizing option. A internal viewing is highly recommended!



WESTWOODLEBER

WESTWOODLEBER
LET US GUIDE YOU HOME



WESTWOODLEBER

Total Area: approx. 84.5 m² ... 909 ft²

THE FLOORPLAN IS FOR ILLUSTRATIVE PURPOSES ONLY AND IS NOT TO SCALE.
Measurements and features are approximate and may differ from the actual property. Verify all details independently; no liability is accepted for errors or omissions.

Property marketing provided by www.fotomarketing.co.uk







WESTWOODLEBER



WESTWOODLEBER



WESTWOODLEBER



WESTWOODLEBER





WESTWOODLEBER



WESTWOODLEBER



WESTWOODLEBER



WESTWOODLEBER



