



WILWESTWOODLEBER
LET US GUIDE YOU HOME

Taverners Way, Hoddesdon, EN11 8TH
Guide price £275,000



Taverners Way, Hoddesdon, EN11 8TH

Westwood Leber are delighted to bring to the market this well-presented two-bedroom apartment, ideally situated within the sought-after Clarence Lodge development on Taverners Way, Hoddesdon.

Offering bright and well-proportioned accommodation throughout, the property comprises a welcoming entrance hall leading into a spacious lounge/diner, providing the perfect space for both relaxing and entertaining. The separate fitted kitchen is well arranged, offering ample storage and worktop space, while the living area also benefits from access to a large private balcony, ideal for outdoor seating and enjoying the warmer months.

The apartment boasts two generous bedrooms, including a sizeable principal bedroom benefitting from its own en-suite shower room, while a further modern family bathroom serves the second bedroom and guests. The property is presented in good condition throughout, making it ready for immediate occupation.

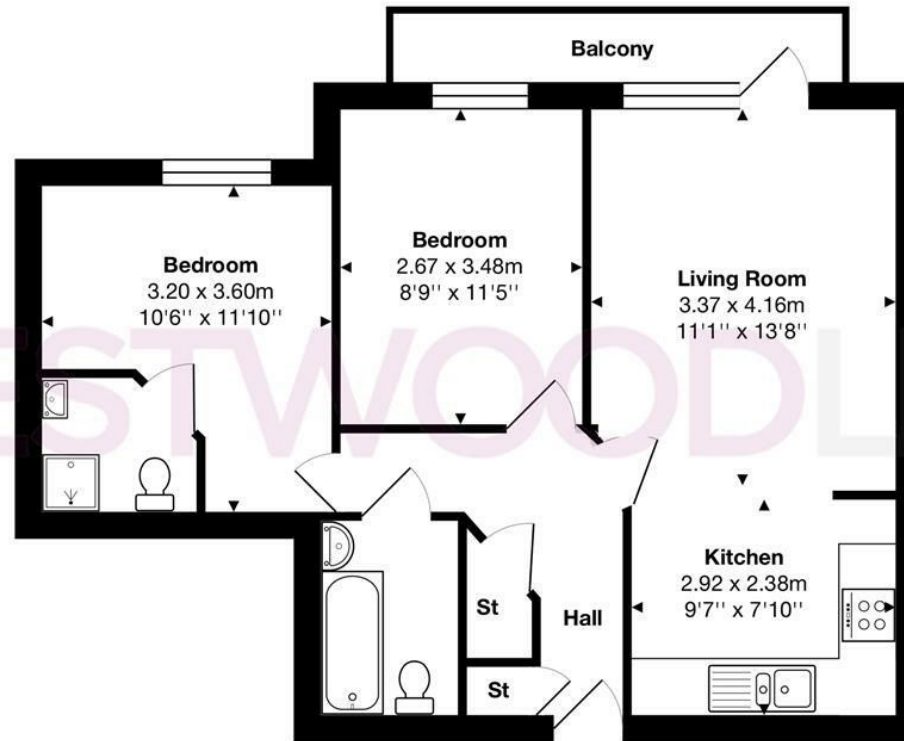
Externally, the apartment benefits from an allocated parking bay, along with well-maintained communal areas.

Ideally positioned within easy reach of Hoddesdon town centre, with its range of shops, restaurants and transport links, this attractive apartment would make an ideal first-time purchase, investment opportunity or downsizing option.

Early viewing is highly recommended.



WESTWOODLEBER



Total Area: approx. 53.3 m² ... 574 ft² (excluding balcony)

THE FLOORPLAN IS FOR ILLUSTRATIVE PURPOSES ONLY AND IS NOT TO SCALE.
 Measurements and features are approximate and may differ from the actual property. Verify all details independently; no liability is accepted for errors or omissions.

Property marketing provided by www.fotomarketing.co.uk





WESTWOODLEBER



WESTWOODLEBER



WESTWOODLEBER



WESTWOODLEBER



