





Glenester Close, Hoddesdon, EN11 9LR

Westwood Leber are delighted to bring to the market this well-presented three-bedroom home with a single garage & extended living space in Glenester Close, Hoddesdon.

Situated within a popular residential turning in Hoddesdon, this well maintained three bedroom terraced home offers versatile living accommodation, a single-storey rear extension, and a generous, well-kept garden, making it an ideal purchase for families and first-time buyers alike.

The ground floor comprises a welcoming entrance hall, a fitted kitchen, and a separate dining room which opens into a spacious living room. To the rear, a single 3 metre extension provides a useful additional reception/playroom or home office, enhancing the flexibility of the living space and offering excellent family functionality.

To the first floor, the property benefits from three well-proportioned bedrooms and a family bathroom, all presented in good decorative order.

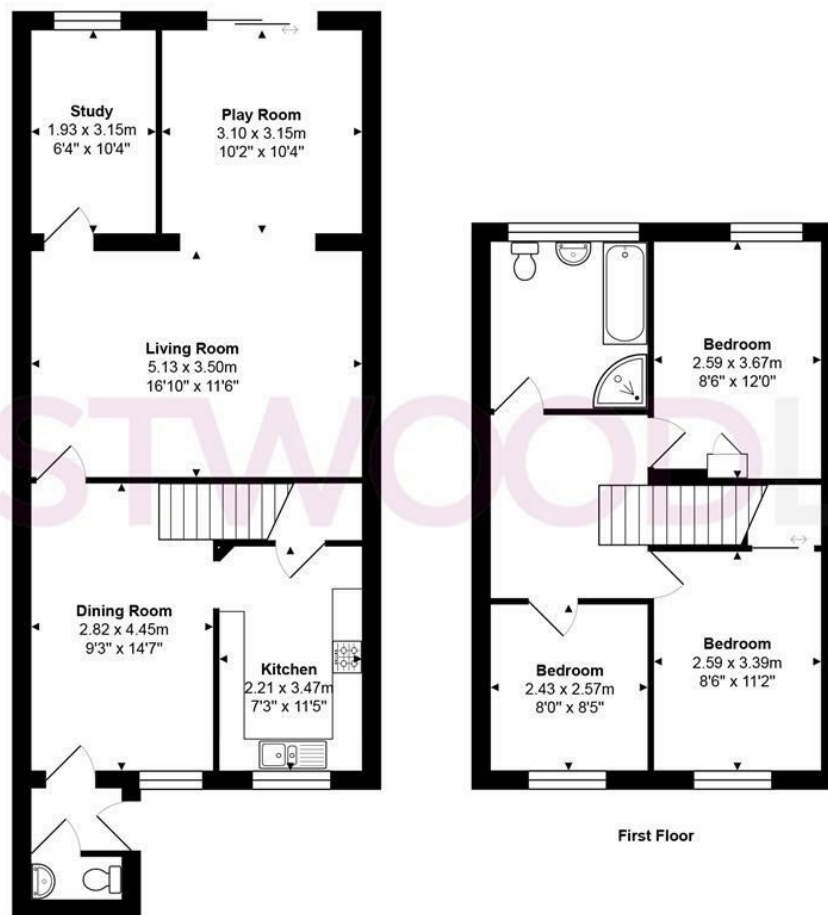
Externally, the rear garden is a real feature — larger than average, well maintained, and ideal for both entertaining and family use. Further benefits include a single garage located on block, ample storage, and a quiet cul-de-sac position.

Early viewing is highly recommended.



 WESTWOODLEBER

 WESTWOODLEBER
LET US GUIDE YOU HOME



Ground Floor

First Floor

Total Area: approx. 103.7 m² ... 1116 ft²

THE FLOORPLAN IS FOR ILLUSTRATIVE PURPOSES ONLY AND IS NOT TO SCALE.
Measurements and features are approximate and may differ from the actual property. Verify all details independently; no liability is accepted for errors or omissions.

Property marketing provided by www.fotomarketing.co.uk











