





Roundhills, Waltham Abbey, EN9 1UQ

Westwood Leber are delighted to bring to the market this two-bedroom maisonette located on the popular Roundhills development in Waltham Abbey.

This property offers fantastic potential for improvement and would benefit from modernisation throughout, making it an excellent opportunity for first-time buyers or investors. Accommodation includes a spacious lounge, kitchen, two well-proportioned bedrooms, and a family bathroom.

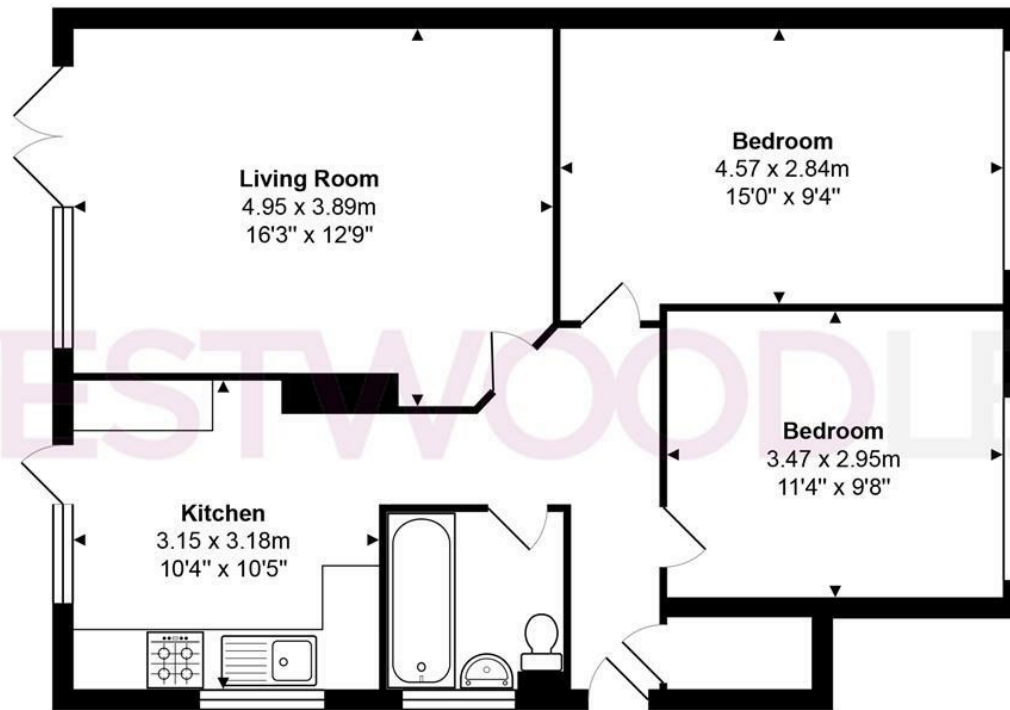
Externally, the property boasts a private garden, ideal for outdoor dining and entertaining.

Roundhills is conveniently situated close to local shops, schools, and excellent transport links, including easy access to the M25.

An early viewing is highly recommended to appreciate the potential this home has to offer.



WESTWOODLEBER



Total Area: approx. 63.5 m² ... 684 ft²

THE FLOORPLAN IS FOR ILLUSTRATIVE PURPOSES ONLY AND IS NOT TO SCALE.
Measurements and features are approximate and may differ from the actual property. Verify all details independently; no liability is accepted for errors or omissions.

Property marketing provided by www.fotomarketing.co.uk







