





Blackadder Cottages, Nazeing Road, Nazeing, EN9 2HX

Westwood Leber are delighted to present this charming and deceptively spacious semi-detached house, ideally located and beautifully presented throughout.

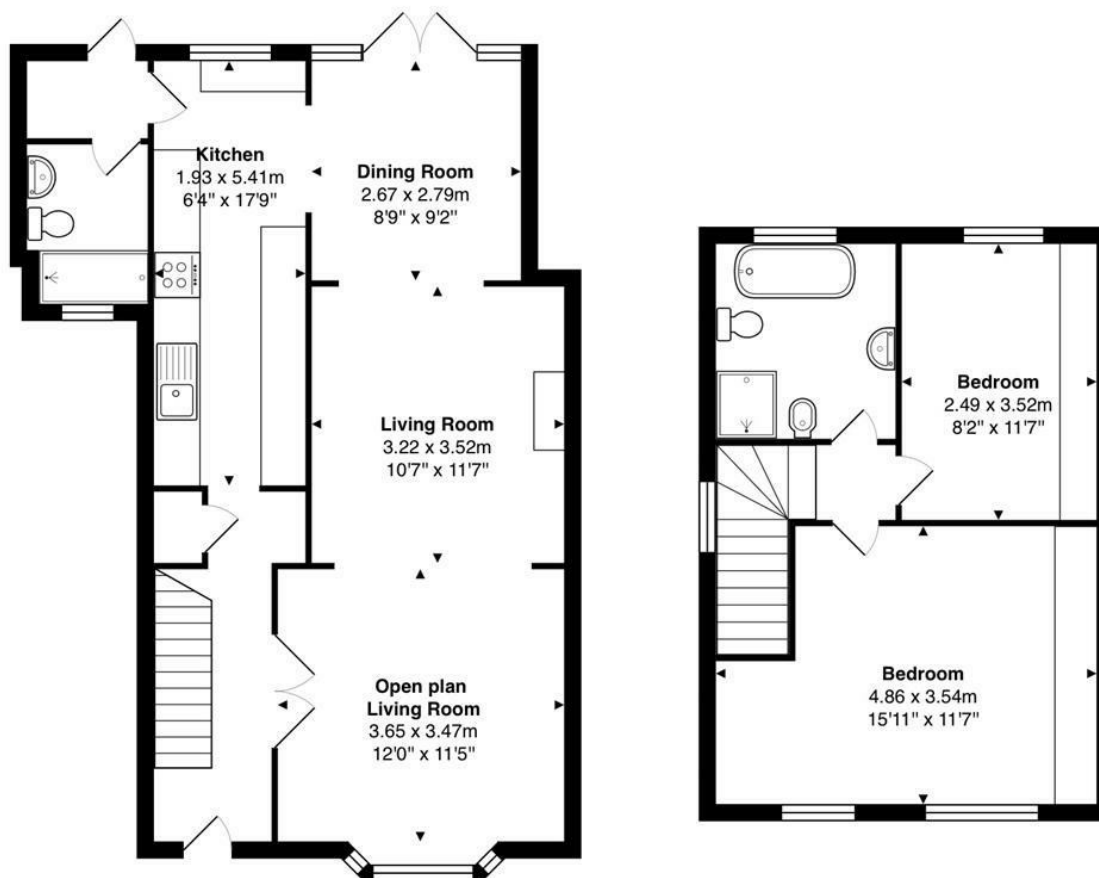
This unique home offers a stylish blend of period features and modern finishes, including oak flooring, bespoke radiator covers, and decorative coving. The ground floor includes a welcoming reception hall, bay-fronted sitting room, elegant family and dining areas, and a bright kitchen/breakfast room with integrated appliances and garden views. There's also a practical laundry area and modern shower room.

Upstairs, the spacious principal bedroom enjoys countryside views and fitted wardrobes, with a second double bedroom and a large family bathroom. A converted loft room offers further versatility.

Externally, the property boasts a wide driveway, garage/storage area, and a beautifully landscaped south-facing garden with multiple terraces, brick BBQ, and timber shed with power.



WESTWOODLEBER



Total Area: approx. 90.5 m² ... 975 ft²

THE FLOORPLAN IS FOR ILLUSTRATIVE PURPOSES ONLY AND IS NOT TO SCALE.
Measurements and features are approximate and may differ from the actual property. Verify all details independently; no liability is accepted for errors or omissions.

Property marketing provided by www.fotomarketing.co.uk



WESTWOODLEBER



WESTWOODLEBER



WESTWOODLEBER



WESTWOODLEBER







