



WESTWOODLEBER

**WESTWOODLEBER**  
LET US GUIDE YOU HOME

Champions Green, Hoddesdon, EN11 9NE  
Guide price £395,000





## Champions Green, Hoddesdon, EN11 9NE

**\*\*CHAIN FREE\*\*** Westwood Leber are delighted to present this beautifully maintained three-bedroom family home, ideally positioned on a highly sought-after residential close within the popular Hundred Acre Development.

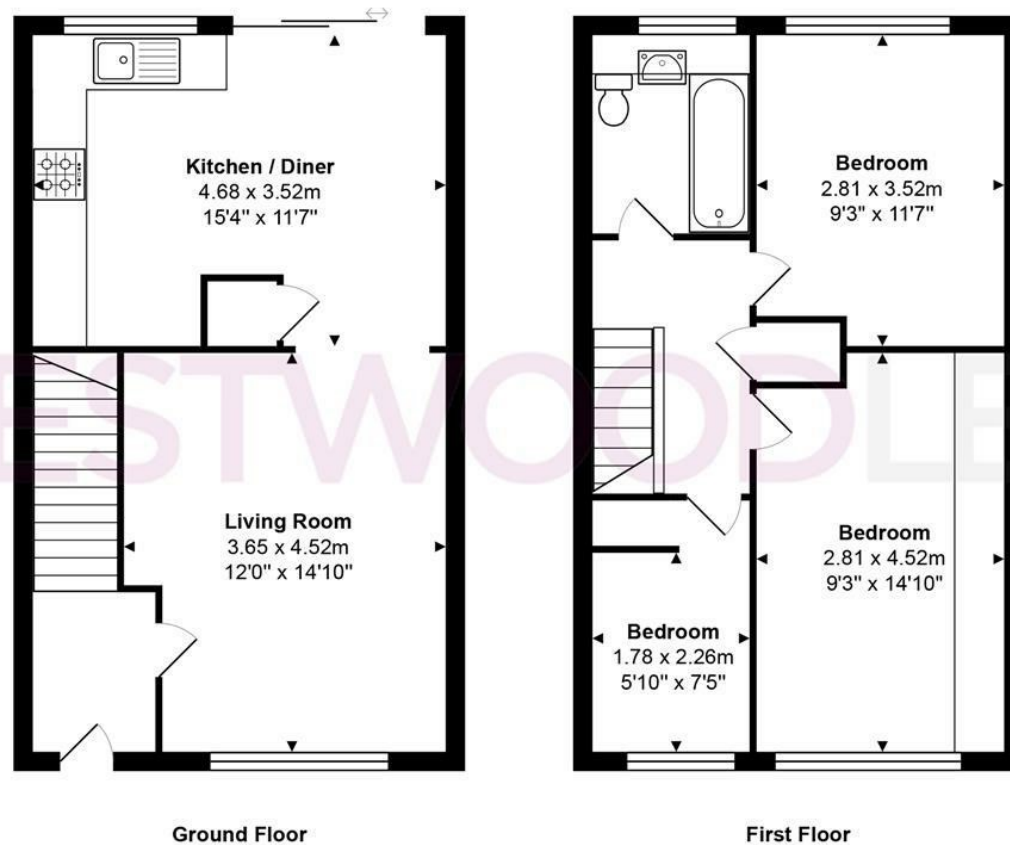
The property features a spacious and inviting lounge that flows seamlessly into a bright open-plan kitchen and dining room. Sliding doors open directly onto a low-maintenance rear garden with convenient rear access, creating an ideal space for family living and entertaining. Upstairs, there are three comfortable bedrooms alongside a modern family bathroom, perfectly suited to the needs of a growing household.

With a neatly kept front garden and a garage en bloc, this home combines practical living with a desirable location. This property benefits from an allocated parking space conveniently located in front of the garage. In addition, there is ample further parking available in two car parks situated at the front and rear of the property, ensuring plenty of space for residents and visitors alike. Situated close to local amenities, excellent schools, and convenient transport links, it offers the perfect balance of comfort and lifestyle. An internal viewing is highly recommended to appreciate all that this delightful home has to offer.





**WESTWOODLEBER**



Total Area: approx. 76.0 m<sup>2</sup> ... 818 ft<sup>2</sup>

THE FLOORPLAN IS FOR ILLUSTRATIVE PURPOSES ONLY AND IS NOT TO SCALE.  
Measurements and features are approximate and may differ from the actual property. Verify all details independently; no liability is accepted for errors or omissions.

Property marketing provided by [www.fotomarketing.co.uk](http://www.fotomarketing.co.uk)





















**W<sup>L</sup> WESTWOODLEBER**