





Roselands Avenue, Hoddesdon, EN11 9BB

Westwood Leber are delighted to bring to the market this beautifully presented three-bedroom semi-detached family home, located in the highly sought-after Roselands Avenue.

This spacious property offers bright and versatile living accommodation throughout, including a generous 19ft kitchen/dining room and a well-proportioned 15ft living room with feature fireplace. Upstairs benefits from three bedrooms and a modern family bathroom.

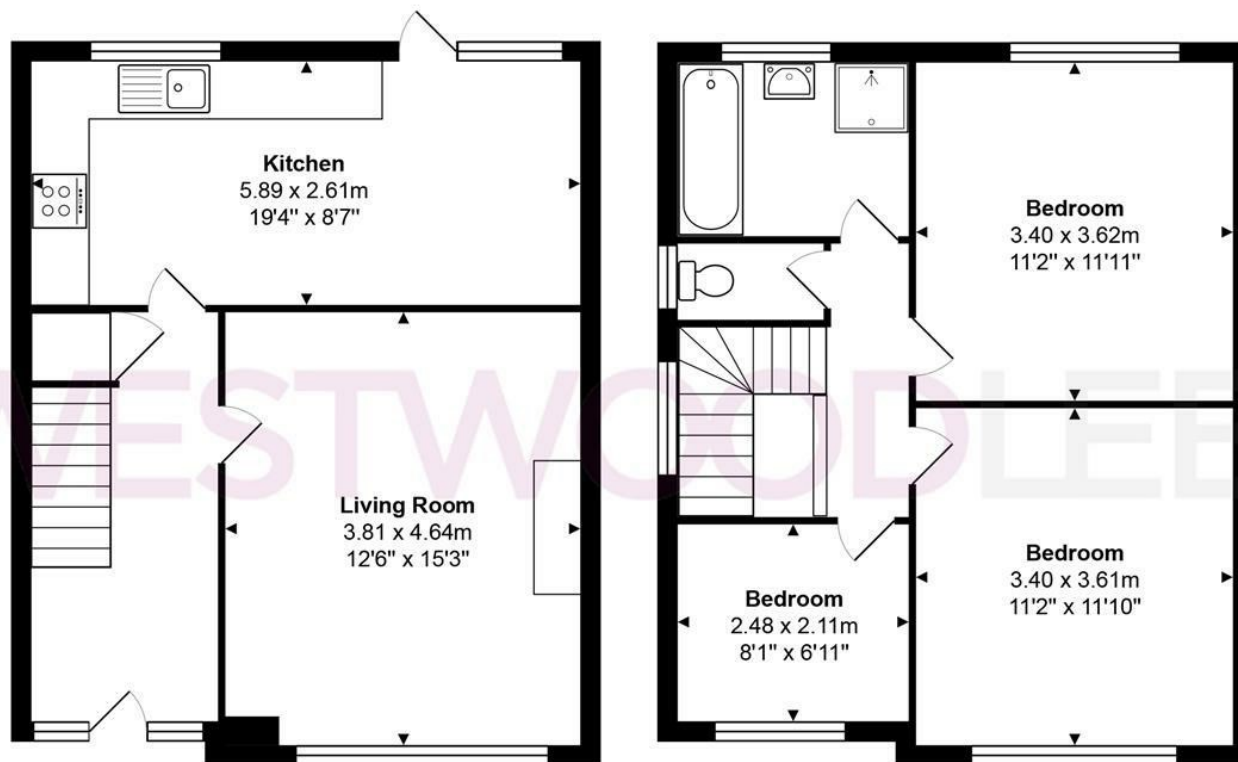
Externally, the property boasts a large rear garden with a patio area, ideal for entertaining, and excellent potential to extend (STPP).

Roselands Avenue is perfectly positioned within easy reach of local schools, shops, and transport links, making it an excellent choice for families.

We highly recommend an internal viewing to appreciate all this home has to offer.



WL WESTWOODLEBER



Ground Floor

First Floor

Total Area: approx. 85.5 m² ... 920 ft²

THE FLOORPLAN IS FOR ILLUSTRATIVE PURPOSES ONLY AND IS NOT TO SCALE.
Measurements and features are approximate and may differ from the actual property. Verify all details independently; no liability is accepted for errors or omissions.

Property marketing provided by www.fotomarketing.co.uk











WESTWOODLEBER