





Cranborne Road, Hoddesdon, EN11 0JJ

Westwood Leber are delighted to bring to the market this fabulous family home providing 1800 sq feet of versatile living accommodation. This substantial property has been well extended by the current owners with accommodation comprising: On the ground floor you have a w/c, large living room, separate playroom with rear access and ample storage space and a fabulous 28ft kitchen/dining room. On the first floor there is a three large bedrooms including a magnificent master suite previously laid out to offer a large four bedroom home - this could easily be converted back to provide the extra room if needed. Externally the property benefits from a large front driveway and a superb rear garden which is exceptional in size and presentation. We would highly recommend an internal viewing as soon as possible!

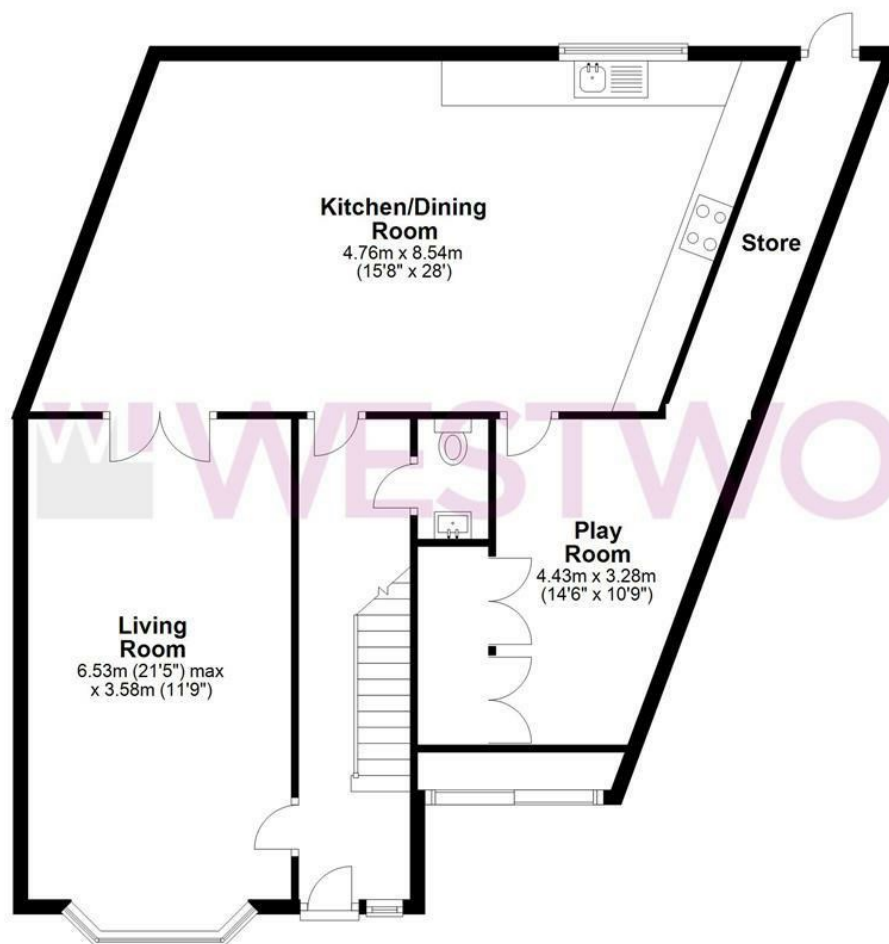


WL WESTWOODLEBER

WL WESTWOODLEBER
LET US GUIDE YOU HOME

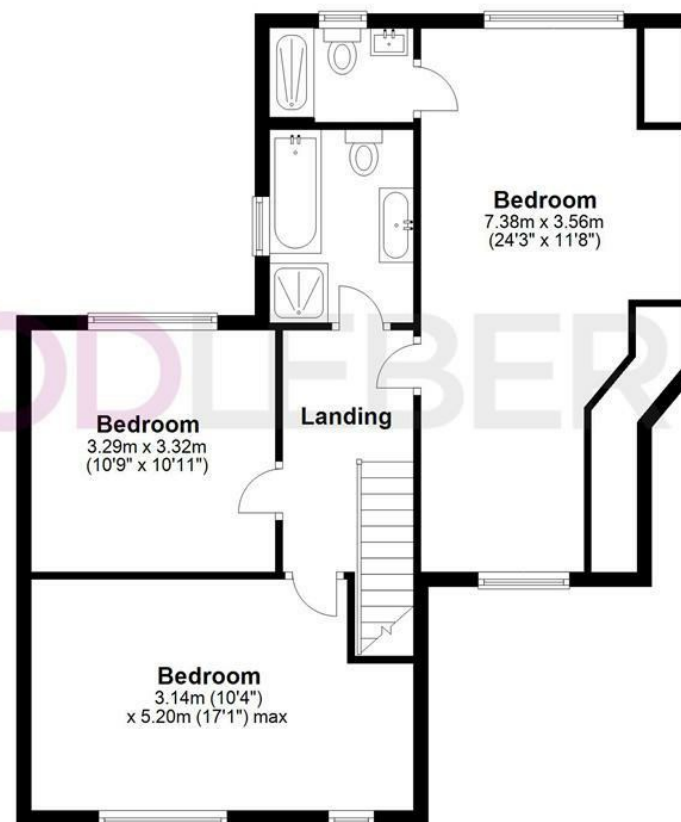
Ground Floor

Approx. 100.5 sq. metres (1081.6 sq. feet)



First Floor

Approx. 67.5 sq. metres (726.3 sq. feet)



Total area: approx. 168.0 sq. metres (1807.9 sq. feet)

FOR ILLUSTRATIVE PURPOSES ONLY. NOT TO SCALE. Whilst every attempt had been made to ensure the accuracy of the floor plan shown, all measurements, positioning, fixtures, features, fittings and any other data shown are an approximate interpretation for illustrative purposes only and are not to scale. No responsibility is taken for any error, omission, miss-statement or use of data shown.

Property marketing provided by www.fotomarketing.co.uk









WESTWOODLEBER



WESTWOODLEBER



WESTWOODLEBER



WESTWOODLEBER







WESTWOODLEBER