



WESTWOODLEBER
LET US GUIDE YOU HOME

Newland Gardens, Hertford, SG13 7WY
£335,000



Newland Gardens, Hertford, SG13 7WY

****Chain Free**** Westwood Leber are delighted to bring to the market this spacious and modern two double bedroom apartment, ideally situated on the second floor of a highly sought-after development within walking distance of Hertford Town Centre. Recently refurbished throughout by the current owners, this beautifully presented apartment has undergone a full transformation, offering stylish and contemporary living in an immaculately maintained setting.

The property features: A stylish, fully fitted kitchen with integrated appliances, bright and airy living room with doors leading to a private balcony, two generous double bedrooms, including a master with en-suite and a modern 'Jack and Jill' main bathroom. Newland Gardens is an immaculately kept development and provides lift access to all floors, secure underground allocated parking, long lease with over 900 years remaining and exclusive access to a residents-only on-site gym.

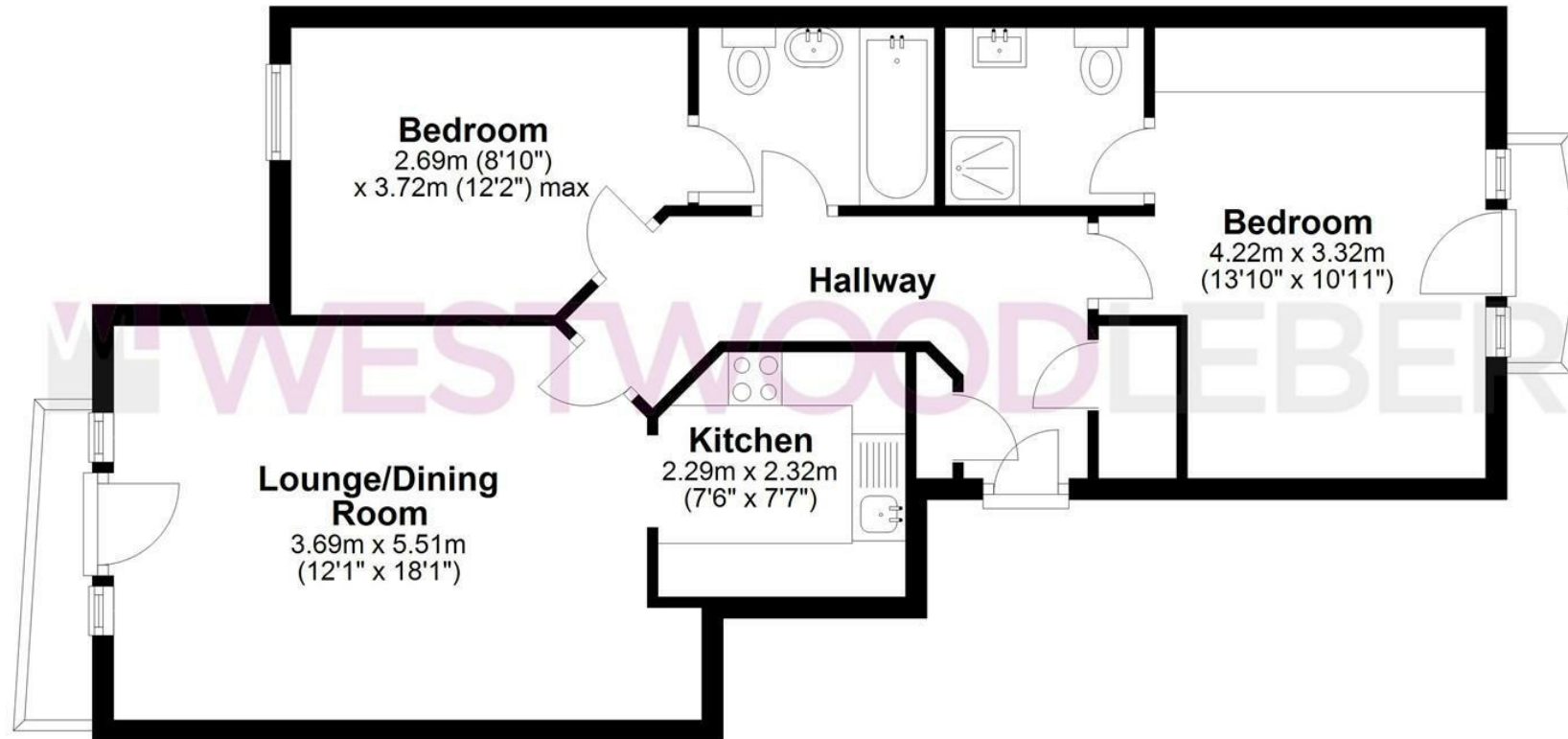
The location benefits from excellent access to the town's wide range of shops, restaurants, and convenient transport links into London—making it ideal for both commuters and local buyers alike.

Offered chain free, this is a fantastic opportunity to secure a modern apartment in a prime Hertford location. Early viewing is highly recommended.



Apartment

Approx. 62.8 sq. metres (676.3 sq. feet)



Total area: approx. 62.8 sq. metres (676.3 sq. feet)

THE FLOORPLAN IS FOR ILLUSTRATIVE PURPOSES ONLY AND IS NOT TO SCALE. Measurements and features are approximate and may differ from the actual property. Verify all details independently; no liability is accepted for errors or omissions.

Property marketing provided by www.fotomarketing.co.uk



WESTWOODLEBER



WESTWOODLEBER



WESTWOODLEBER



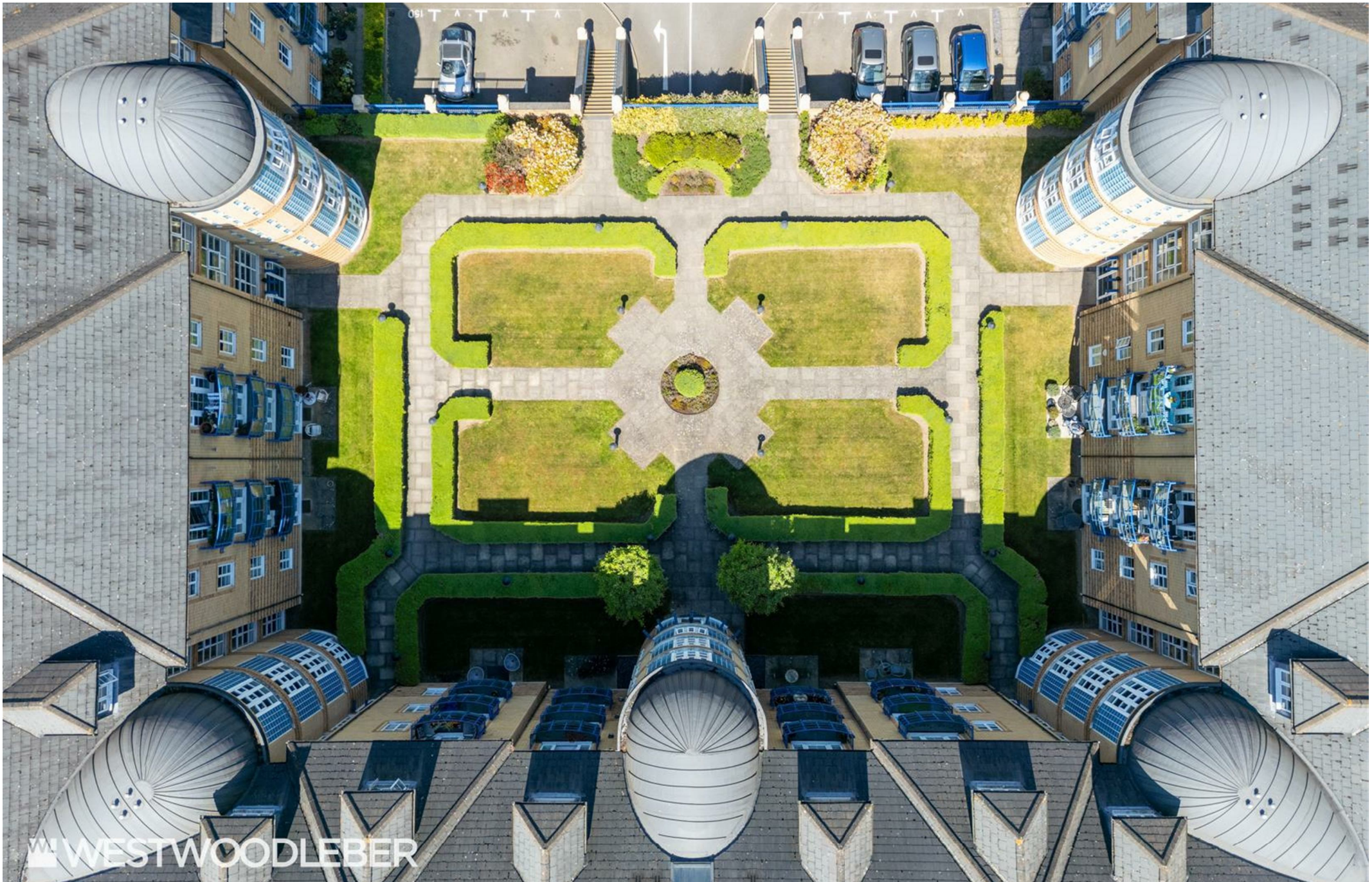
WESTWOODLEBER











 WESTWOODLEBER

 WESTWOODLEBER
LET US GUIDE YOU HOME