



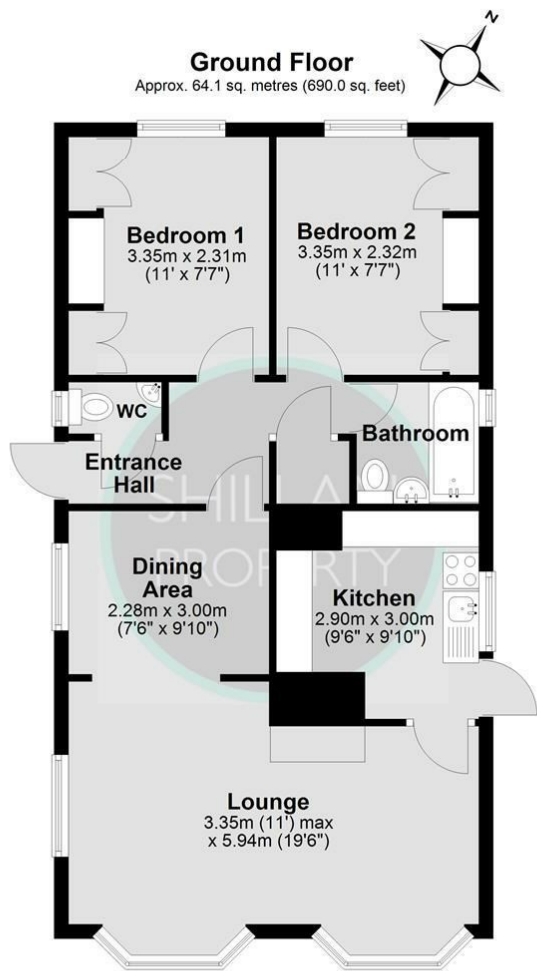
2 Finch Crescent, Turners Hill Park, Turners Hill, RH10 4QN

**Asking price £155,000**

This delightful 2 bedroom park home is set within the wooded grounds of the award winning Berkeley Park in Turners Hill. The property also features a lounge with a separate dining area, a family bathroom plus a second separate toilet useful for guests. The garden runs around the entire property, including a greenhouse, and there is an allocated parking space to the front. The park is ideally situated just outside the village centre and offers easy access to local shops and pubs. The park has an on site convenience store and a social club. Transport links include bus routes to Crawley, East Grinstead and Tunbridge Wells. For the over 50's only. No chain. Please note the property has a perpetual lease.



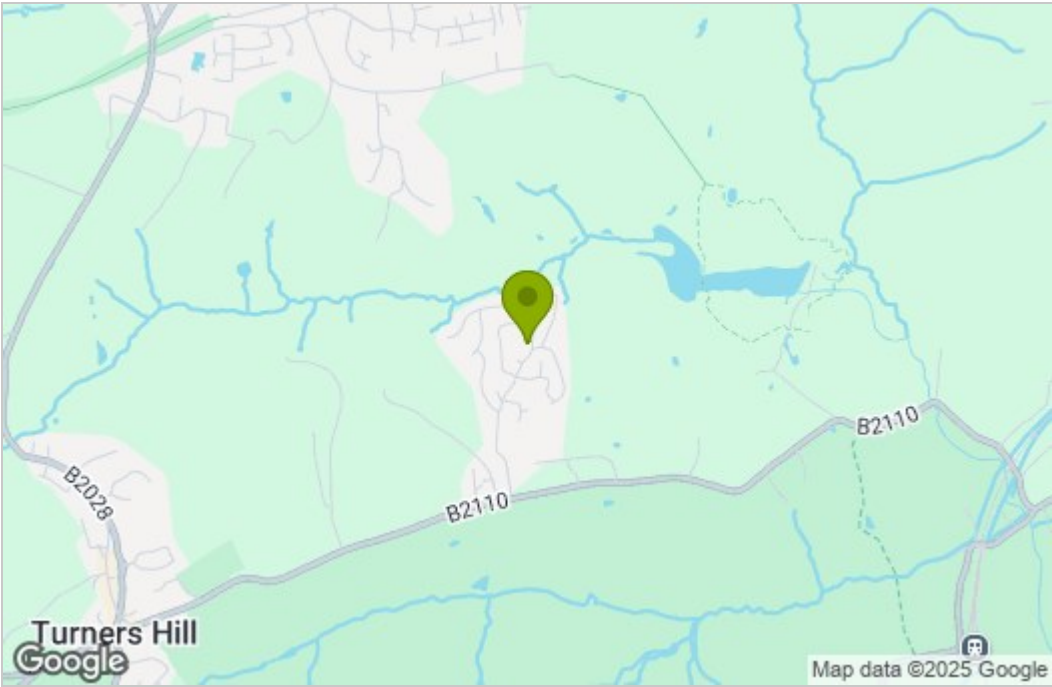
Floor Plan



Total area: approx. 64.1 sq. metres (690.0 sq. feet)

These images are for representational purposes only. Drawn by Brian Blunden.  
Plan produced using PlanUp.

Area Map



Energy Efficiency Graph

These particulars, whilst believed to be accurate are set out as a general outline only for guidance and do not constitute any part of an offer or contract. Intending purchasers should not rely on them as statements of representation of fact, but must satisfy themselves by inspection or otherwise as to their accuracy. No person in this firms employment has the authority to make or give any representation or warranty in respect of the property.