

MATTHEW JAMES

Residential Sales • Lettings • Management



Newcomen House York Rise, NW5 1DT

Asking Price £350,000

A good sized two double bedroom flat on the third (top) floor of a purpose built block located in enviable Dartmouth Park and within close walking distance of Parliament Hill Fields and its large selection of amenities including a running track, lido, tennis courts and cafes all of which lead onto the wide open spaces of Hampstead Heath. Offered Chain Free With New 250 Year Lease. Mixed Tenure Block.

Third (Top) Floor

Hallway

Living Room



Access to balcony.

Kitchen



Access to balcony.

Bathroom



Bedroom One



Bedroom Two



Balcony

Additional Information

New 250 Year Lease

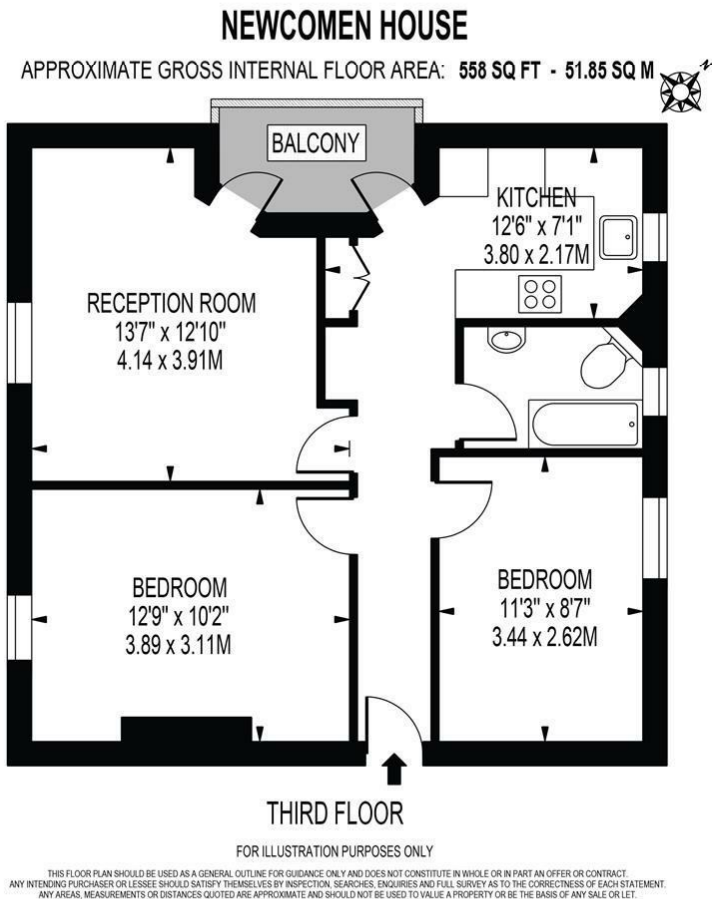
Service Charge T.B.C.

Ground Rent - Zero

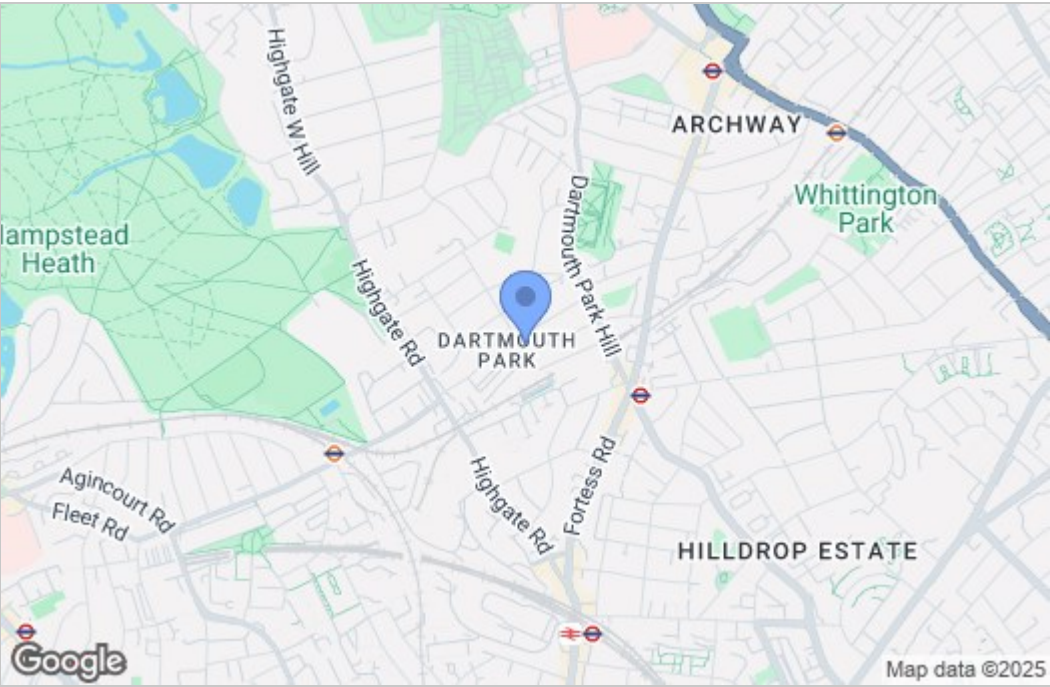
Camden Council Tax Band C

Newly Installed Vaillant Combination Boiler

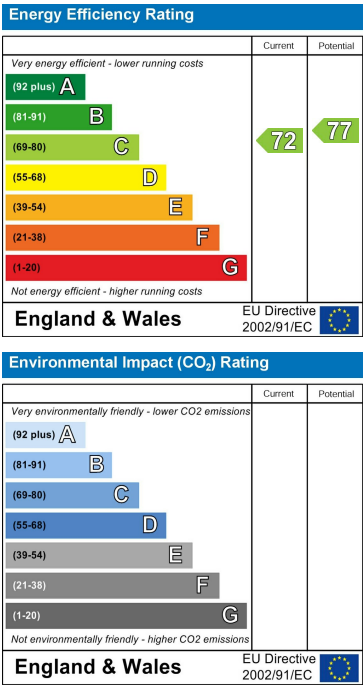
Floor Plan



Area Map



Energy Efficiency Graph



These particulars, whilst believed to be accurate are set out as a general outline only for guidance and do not constitute any part of an offer or contract. Intending purchasers should not rely on them as statements of representation of fact, but must satisfy themselves by inspection or otherwise as to their accuracy. No person in this firms employment has the authority to make or give any representation or warranty in respect of the property.