



1 St. Marys Drive, Perth, PH2 7BY
Offers over £400,000

 4  2  3  C



1 St. Marys Drive Perth, PH2 7BY

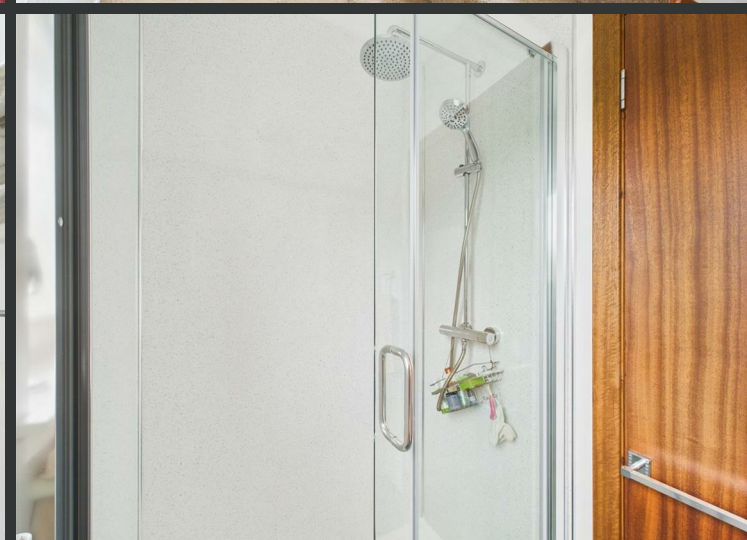
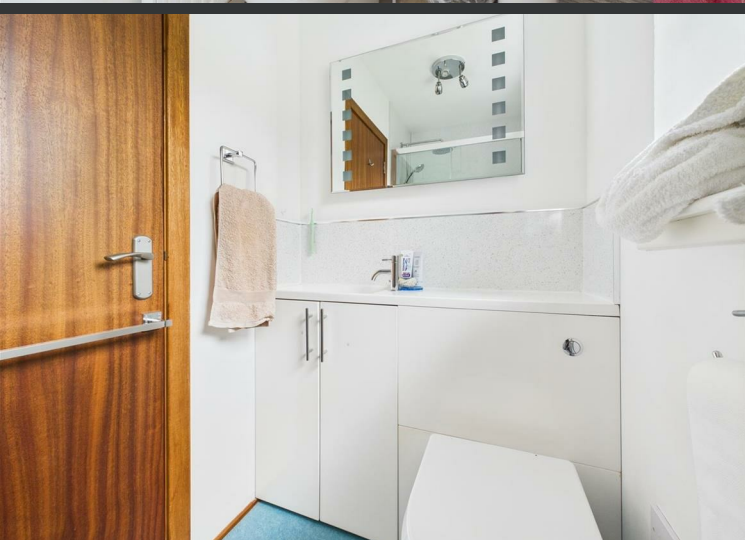
- Extended four-bedroom home
- Spacious lounge with fireplace
- Dining room with French doors to garden
- Principal bedroom with en suite
- Two modern bathrooms + ground floor WC
- Generous 1,539 sq. ft. layout
- Stylish kitchen with separate laundry room
- Additional playroom/snug
- Wealth of off-street parking
- Quiet yet central Perth location

Set within one of Perth's most sought-after residential pockets, 1 St. Mary's Drive is a beautifully presented and generously proportioned four-bedroom detached family home with a flexible layout across two levels, perfect for modern living. Tucked behind vibrant front gardens, this striking property boasts abundant internal space and plenty of natural light throughout.

The ground floor features a welcoming entrance hallway, a bright and spacious lounge with large picture windows and a feature fireplace, a stylish modern kitchen with ample workspace and storage, and a handy laundry room. The layout flows into a charming dining room with dual patio doors opening to the rear garden, plus an additional playroom or snug—ideal for growing families. A guest WC completes the ground level. Upstairs, four generously sized bedrooms offer flexible usage—perfect for families needing home office space or accommodating guests. The principal bedroom benefits from an en suite shower room, while a modern family bathroom with full suite serves the remaining rooms. Outside, the enclosed rear garden has a lovely decked area and lawn space, perfect for entertaining or relaxing in privacy. A garage and off-street parking further enhance the home's appeal. This is an exceptional opportunity to secure a large, stylish, and versatile home in a peaceful yet central location.

Offers over £400,000





Location

St. Mary's Drive enjoys a prime position in the desirable Kinnoull area of Perth—an established and family-friendly neighbourhood known for its peaceful streets and excellent amenities. Residents benefit from proximity to highly regarded schools, local shops, and scenic green spaces including Kinnoull Hill. Perth city centre, with its vibrant selection of restaurants, cafés, shops, and leisure facilities, is within easy reach. Commuters will appreciate the excellent transport links, including nearby bus services and access to the M90 for Edinburgh or the A9 for Glasgow and the Highlands. It's a perfect spot to enjoy a balance of town and tranquillity.





