



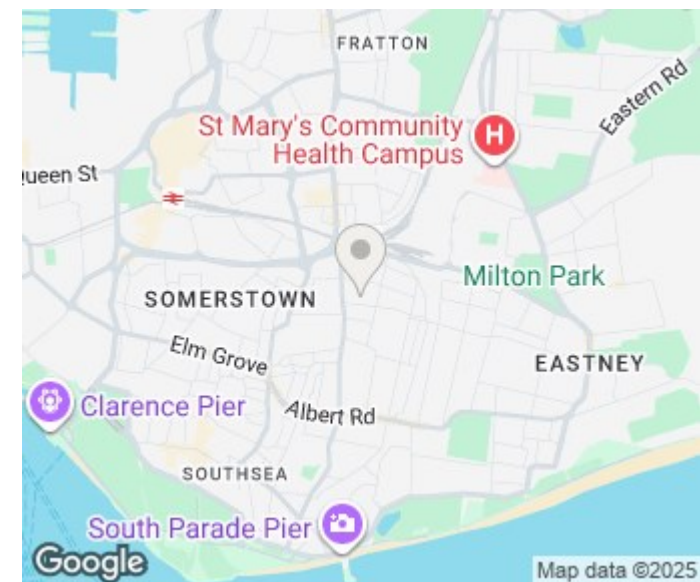
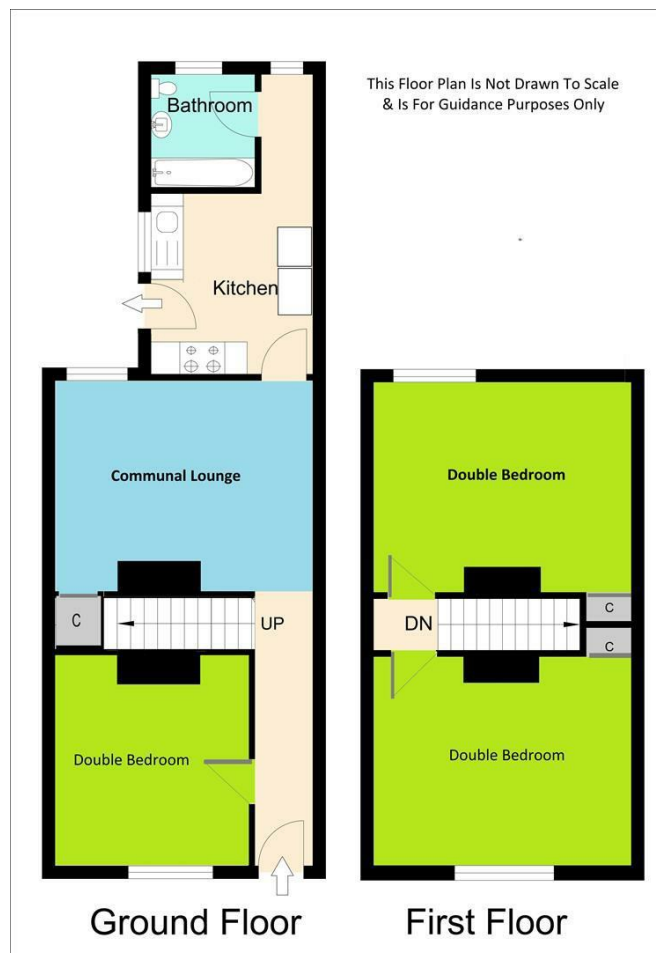
## 49 PERCY ROAD

SOUTHSEA, PO4 0BH

£1,575 PCM

STUDENT PROPERTY 2026/2027 : THREE DOUBLE BEDROOM, comprising of a COMMUNAL LOUNGE, FITTED KITCHEN with APPLIANCES, GROUND FLOOR BATHROOM with ELECTRIC SHOWER OVER, REAR PEDESTRIAN ACCESS into GARDEN and has the BENEFIT of GAS CENTRAL HEATING and DOUBLE GLAZING. FREE UNIVERSITY BUS CLOSE BY. VIEWING HIGHLY RECOMMENDED.





Energy Efficiency Rating		
	Current	Potential
Very energy efficient - lower running costs		
(92 plus) <b>A</b>		
(81-91) <b>B</b>		
(69-80) <b>C</b>		
(55-68) <b>D</b>		
(39-54) <b>E</b>		
(21-38) <b>F</b>		
(1-20) <b>G</b>		
Not energy efficient - higher running costs		
<b>England &amp; Wales</b>	EU Directive 2002/91/EC	

Agents Note: Whilst every care has been taken to prepare these particulars, they are for guidance purposes only. All measurements are approximate and are for general guidance purposes only and whilst every care has been taken to ensure their accuracy, they should not be relied upon and potential buyers/tenants are advised to recheck the measurements

Southsea Office Lettings  
97 Albert Road  
Southsea  
Hampshire  
PO5 2SG

02392 830888  
lettings@christieuk.com  
www.christieuk.com

