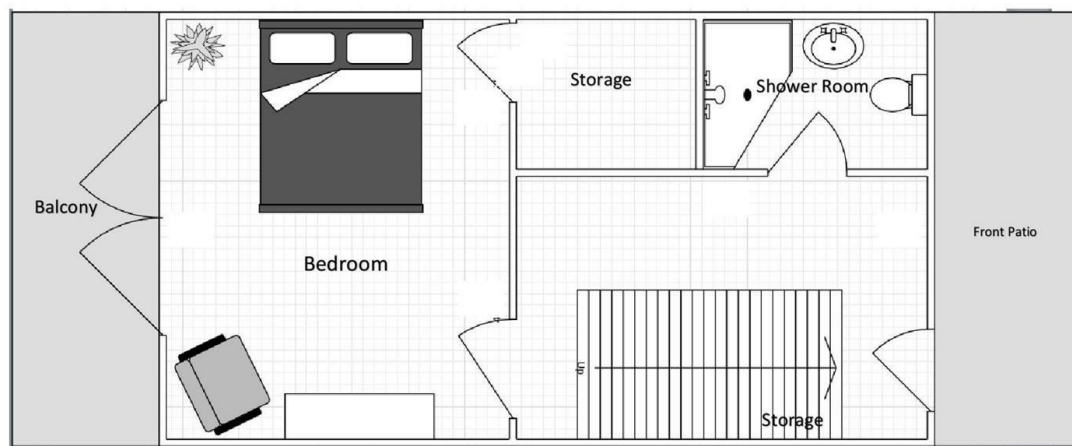


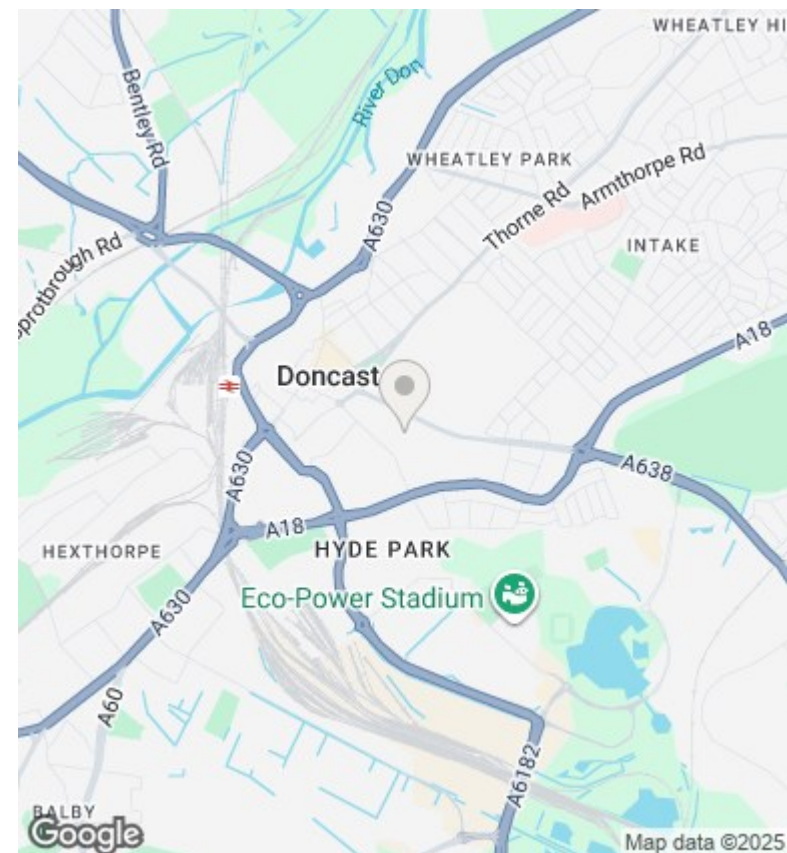
Apartment 8, Berkeley Court, Green Park Drive, Bennetthorpe,

£900 PCM

- Stunning Park Views
- Three Balconies
- Top Floor Living Space
- Luxury Living
- Communal And Private Outside Space
- Recently Finished
- 24/7 CCTV Electric Gates - Surrounded By a 6 Foot Fence
- Parking For 2 Cars
- Furnished or Unfurnished Available
- Beautifully Finished



Ground Floor



Directions

Viewings

Viewings by arrangement only. Call 01302 330055 to make an appointment.

Council Tax Band

C

EPC Rating:

E

Energy Efficiency Rating		
	Current	Potential
Very energy efficient - lower running costs		
(92 plus) A		
(81-91) B		
(69-80) C		72
(55-68) D		
(39-54) E	40	
(21-38) F		
(1-20) G		
Not energy efficient - higher running costs		
England & Wales		EU Directive 2002/91/EC