



Coddington Close, Ware SG12 9FN

£103,500 - representing a 45% share of total value



1



1

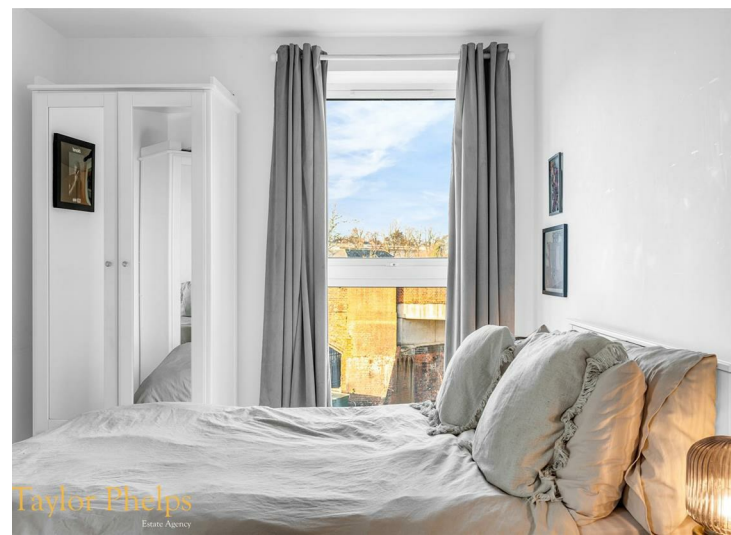
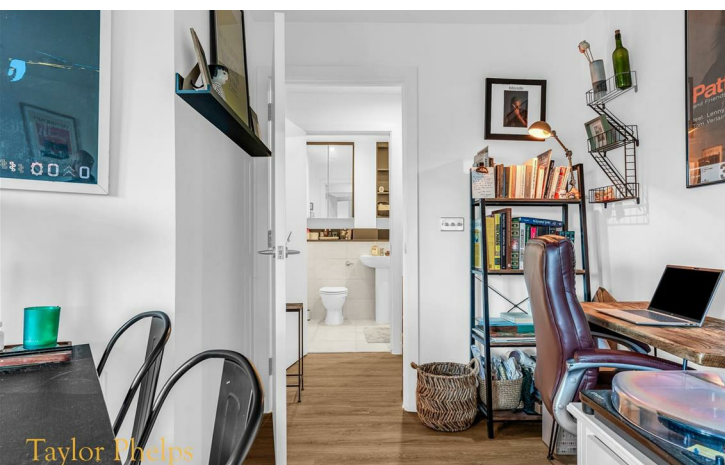
Taylor Phelps

Estate Agency

Estate Agency



*Taylor Phelps are pleased to offer this superb, high spec, one bedroom apartment in Ware, close to the high street and station which serves both Herford East and London Liverpool Street! This rarely available apartment is available to purchase on the shared ownership scheme (45%) and further benefits from a private balcony, a long 120 year lease, a modern open plan kitchen and luxury bathroom suite. This recently constructed development further offers a lift to all floors and residents parking.*









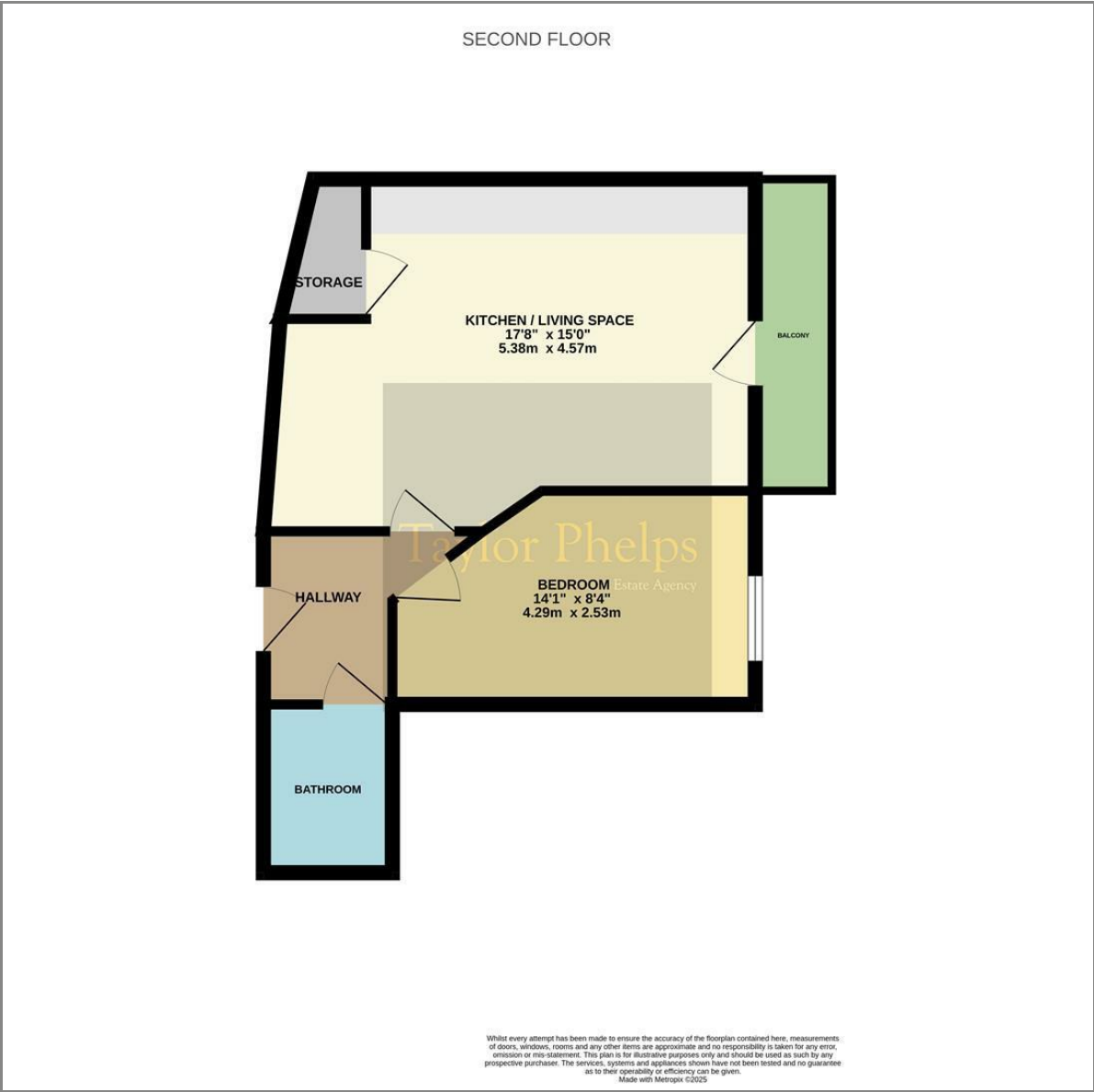


Taylor Phelps

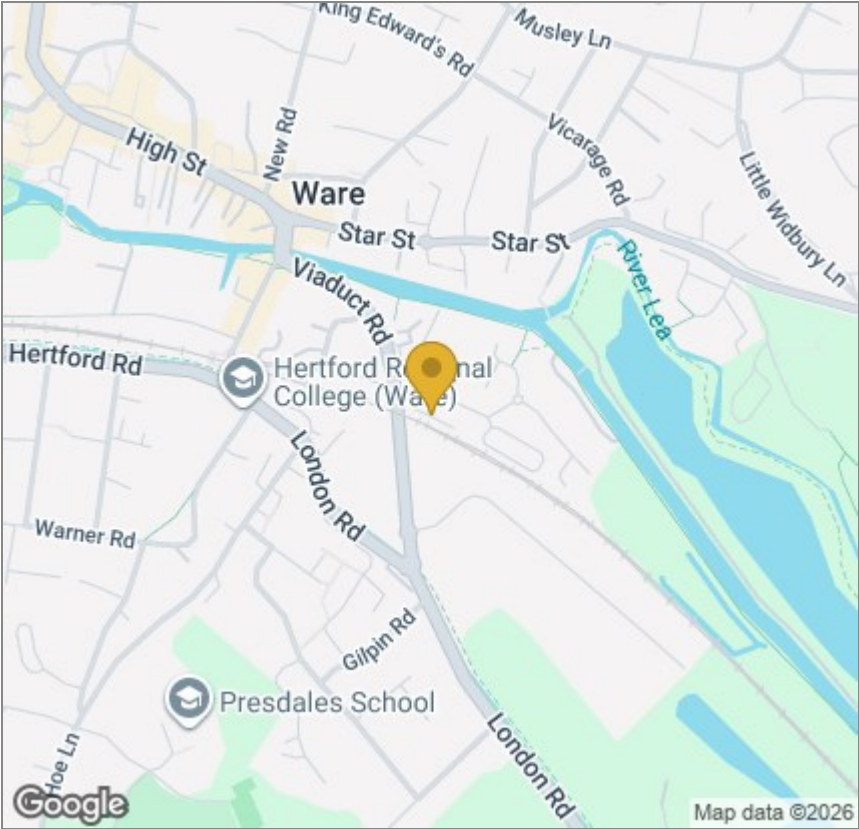
Estate Agency



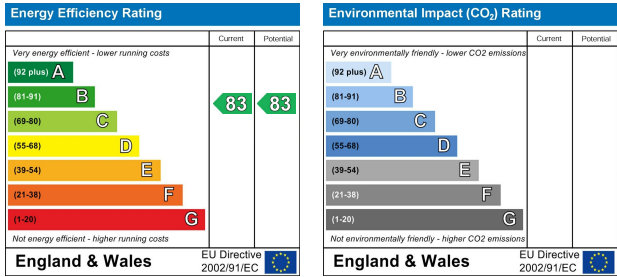
Floor Plan



Area Map



Energy Efficiency Graph



These particulars, whilst believed to be accurate are set out as a general outline only for guidance and do not constitute any part of an offer or contract. Intending purchasers should not rely on them as statements of representation of fact, but must satisfy themselves by inspection or otherwise as to their accuracy. No person in this firms employment has the authority to make or give any representation or warranty in respect of the property.