



Fusion Court, Braodmeads, Ware SG12 9EJ

£1,350 per calendar month



2



2

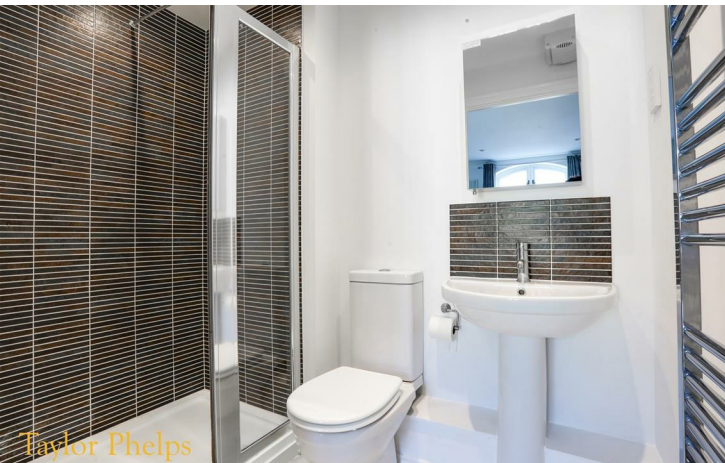
Taylor Phelps

Estate Agency

Taylor Phelps



*Taylor Phelps are pleased to offer this superb two bedroom apartment positioned within this modern sought after riverside development close to Ware high street and train station! This fantastic second floor apartment boasts a balcony, two bathrooms, a lift to all floors, new carpets throughout and gated residents parking!*





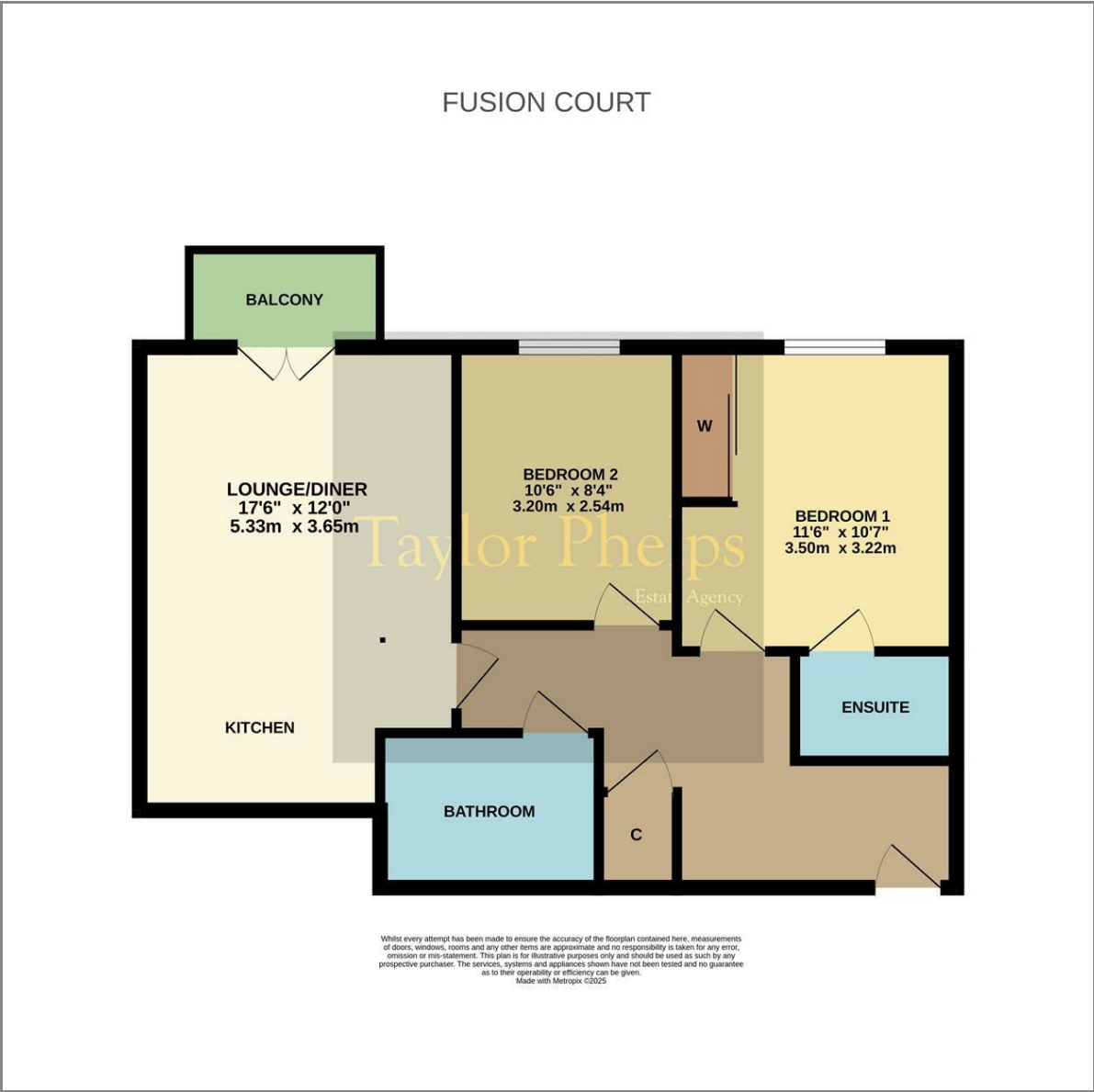








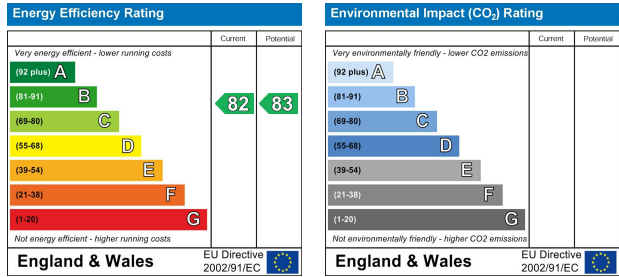
Floor Plan



Area Map



Energy Efficiency Graph



These particulars, whilst believed to be accurate are set out as a general outline only for guidance and do not constitute any part of an offer or contract. Intending purchasers should not rely on them as statements of representation of fact, but must satisfy themselves by inspection or otherwise as to their accuracy. No person in this firms employment has the authority to make or give any representation or warranty in respect of the property.