



Copperwood, Hertford SG13 7HZ

Offers in excess of £315,000



2



1

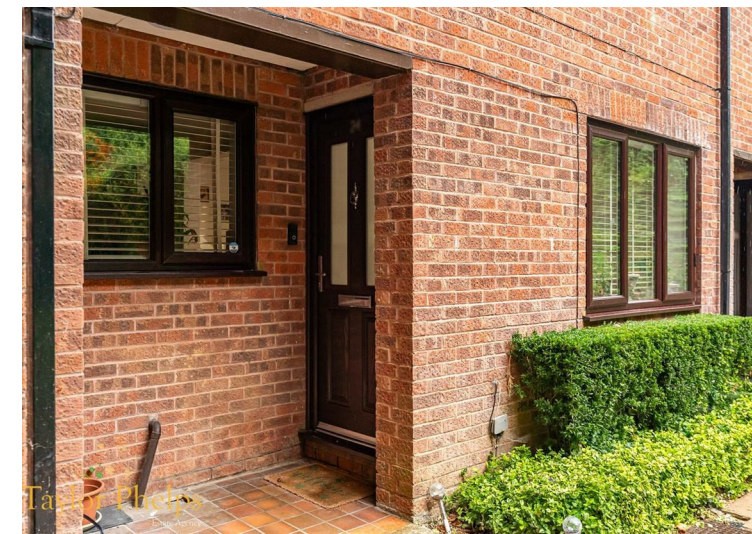
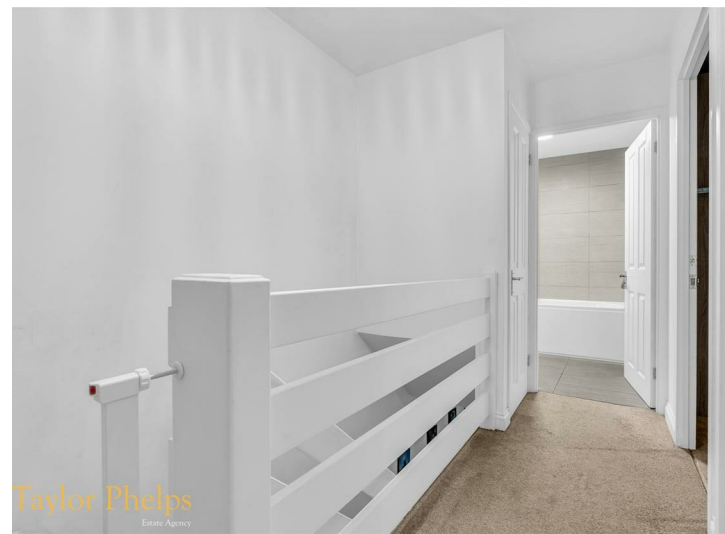
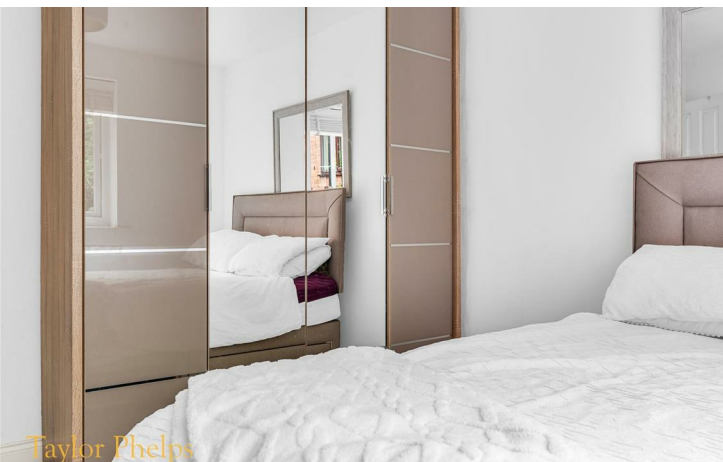
Taylor Phelps

Estate Agency

Estate Agency



*Taylor Phelps are pleased to offer this rarely available two double bedroom split level maisonette positioned within this highly desirable residential location in Hertford. This spacious property further benefits from a long 900+ year lease, high spec refitted kitchen and bathroom and residents parking for two vehicles. Hertford town itself is within close proximity and offers numerous conveniences with two train stations serving central London.*









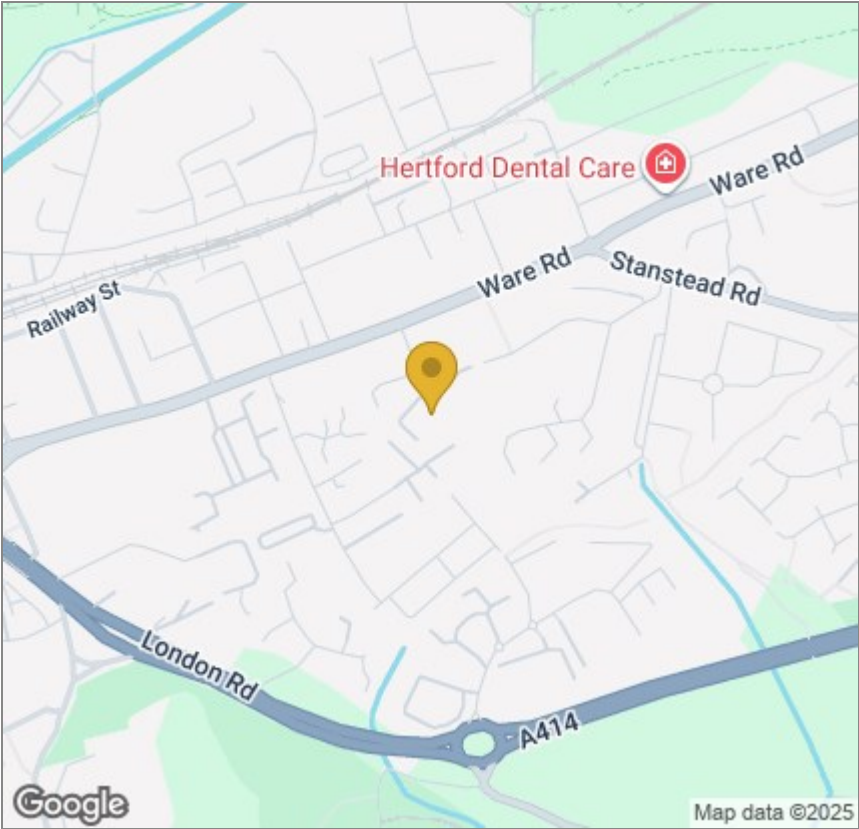




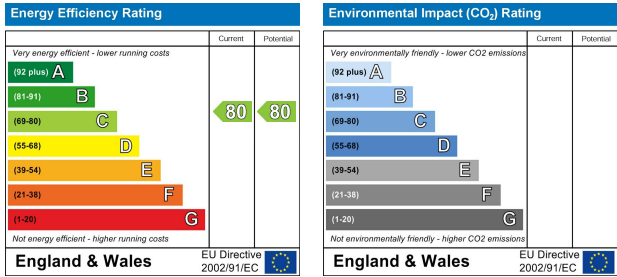
Floor Plan



Area Map



Energy Efficiency Graph



These particulars, whilst believed to be accurate are set out as a general outline only for guidance and do not constitute any part of an offer or contract. Intending purchasers should not rely on them as statements of representation of fact, but must satisfy themselves by inspection or otherwise as to their accuracy. No person in this firms employment has the authority to make or give any representation or warranty in respect of the property.