



Ashbourne Gardens, Hertford SG13 8BQ

£315,000



2



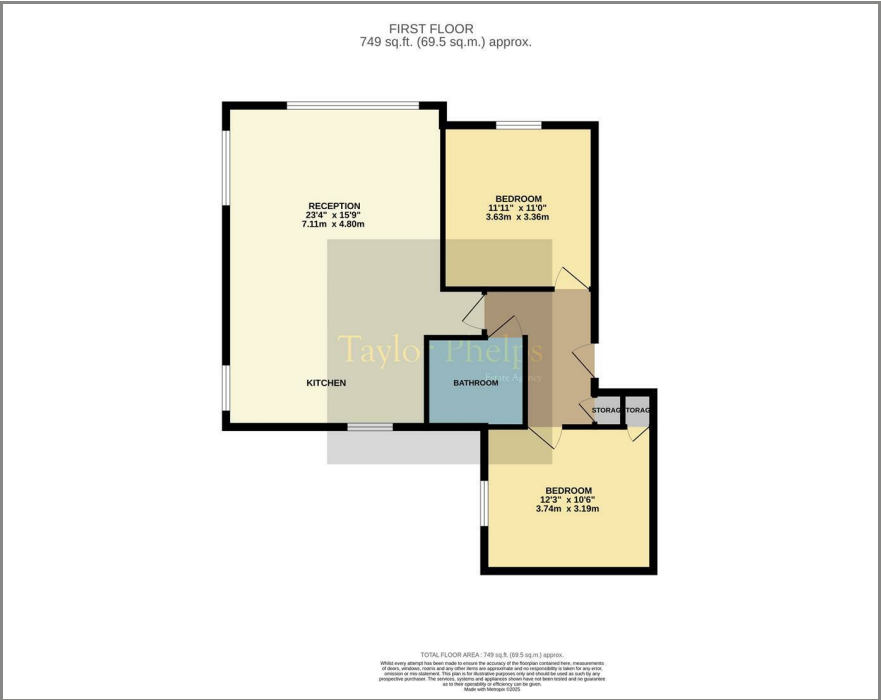
1

Taylor Phelps

Estate Agency



Floor Plan



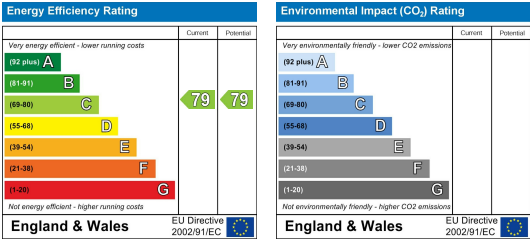
Area Map



Taylor Phelps are pleased to offer this modern two double bedroom apartment forming part of Ashbourne Gardens, an exclusive development in the county town of Hertford. This rarely available first floor apartment benefits from an open plan kitchen with breakfast island, loft access and residents parking.



Energy Efficiency Graph



These particulars, whilst believed to be accurate are set out as a general outline only for guidance and do not constitute any part of an offer or contract. Intending purchasers should not rely on them as statements of representation of fact, but must satisfy themselves by inspection or otherwise as to their accuracy. No person in this firm's employment has the authority to make or give any representation or warranty in respect of the property.