



Maple Lodge, Riversmeet, Hertford SG14 1LW

£1,250



2



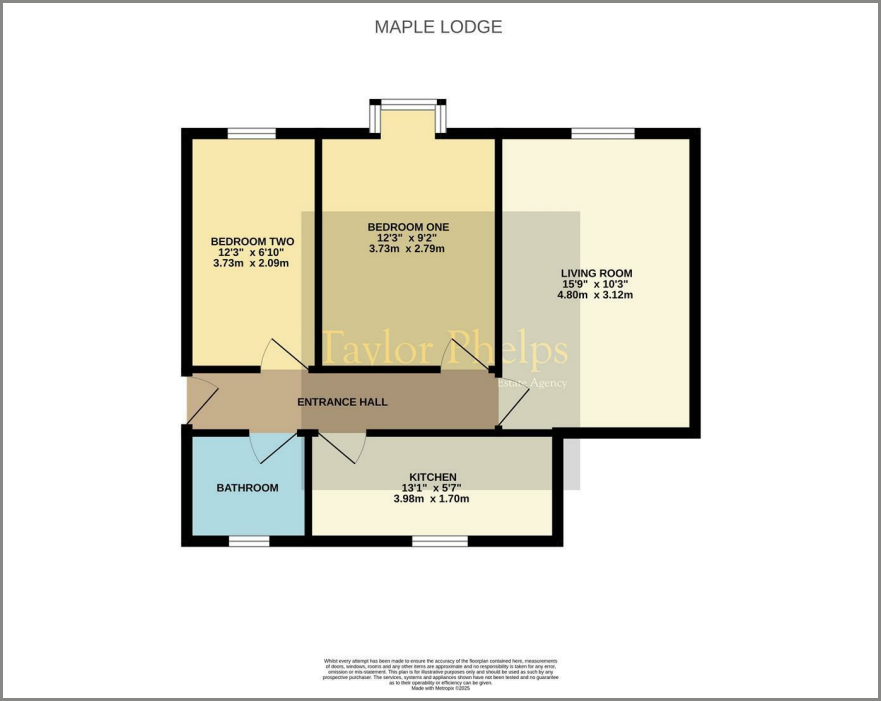
1

Taylor Phelps

Estate Agency



Floor Plan



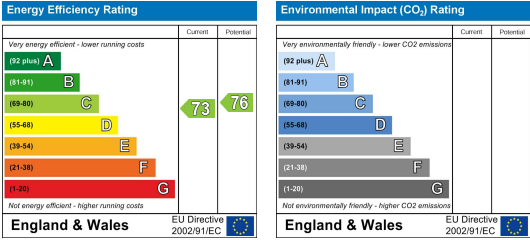
Area Map



Taylor Phelps are pleased to offer this modern two bedroom ground floor apartment positioned within a short walk from Hertford town centre and Hertford North mainline station which serves central London. This property benefits from double glazing, gas central heating, and allocated parking



Energy Efficiency Graph



These particulars, whilst believed to be accurate are set out as a general outline only for guidance and do not constitute any part of an offer or contract. Intending purchasers should not rely on them as statements of representation of fact, but must satisfy themselves by inspection or otherwise as to their accuracy. No person in this firm's employment has the authority to make or give any representation or warranty in respect of the property.