



Whitehall Cottages, Hunsdon SG12 8QB

Guide price



3



1

Taylor Phelps

Estate Agency

Estate Agency



Taylor Phelps are pleased to offer this late Victorian three bedroom semi detached house positioned within the highly desirable and extremely sought after village of Hunsdon. This family home further benefits from a good size rear garden extending to over 120ft in length and is surrounded by open countryside. Internally the property has been subject to some extensive upgrades including a high spec family bathroom with luxury shower and freestanding bathtub. Further features include exposed fireplaces, double doors on to the garden, a utility room and a ground floor w/c. Externally to the front there is parking and a garage. Hunsdon itself boasts all the characteristics of a fantastic village community with two countryside pubs, a highly regarded school and village hall.

















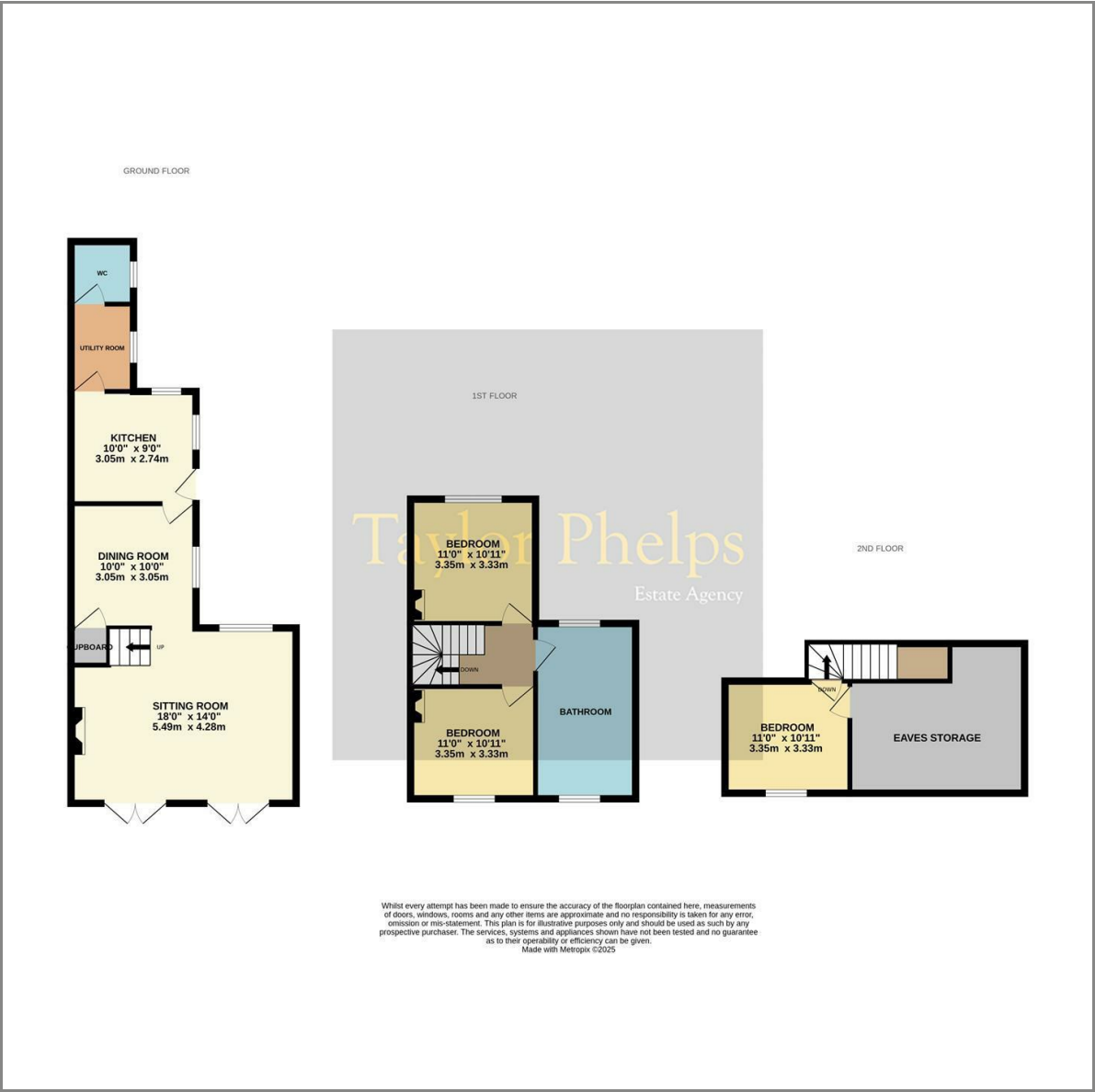








Floor Plan



These particulars, whilst believed to be accurate are set out as a general outline only for guidance and do not constitute any part of an offer or contract. Intending purchasers should not rely on them as statements of representation of fact, but must satisfy themselves by inspection or otherwise as to their accuracy. No person in this firms employment has the authority to make or give any representation or warranty in respect of the property.

Area Map



Energy Efficiency Graph

