



St Cross Court, Upper Marsh Lane, Hoddesdon EN11 8LG

Offers in excess of £300,000



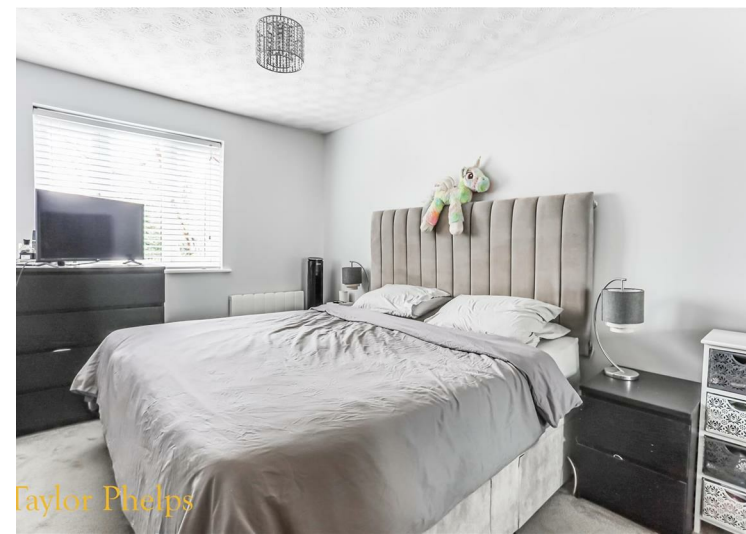
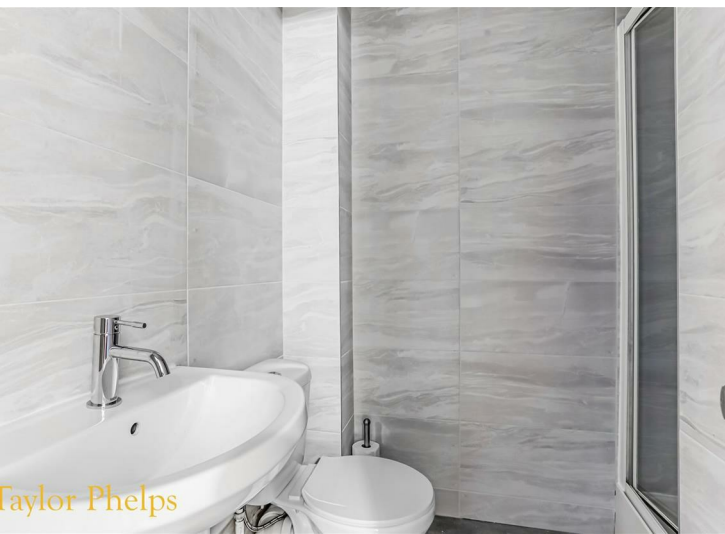
Taylor Phelps

Estate Agency

Taylor Phelps



*Taylor Phelps are pleased to offer this rarely available, larger style two bedroom apartment positioned close to Hoddesdon town centre and Broxbourne train station which serves central London. This apartment is located on the ground floor and further benefits from two bathrooms, a spacious - dual aspect living room, a long lease and residents parking for two vehicles.*

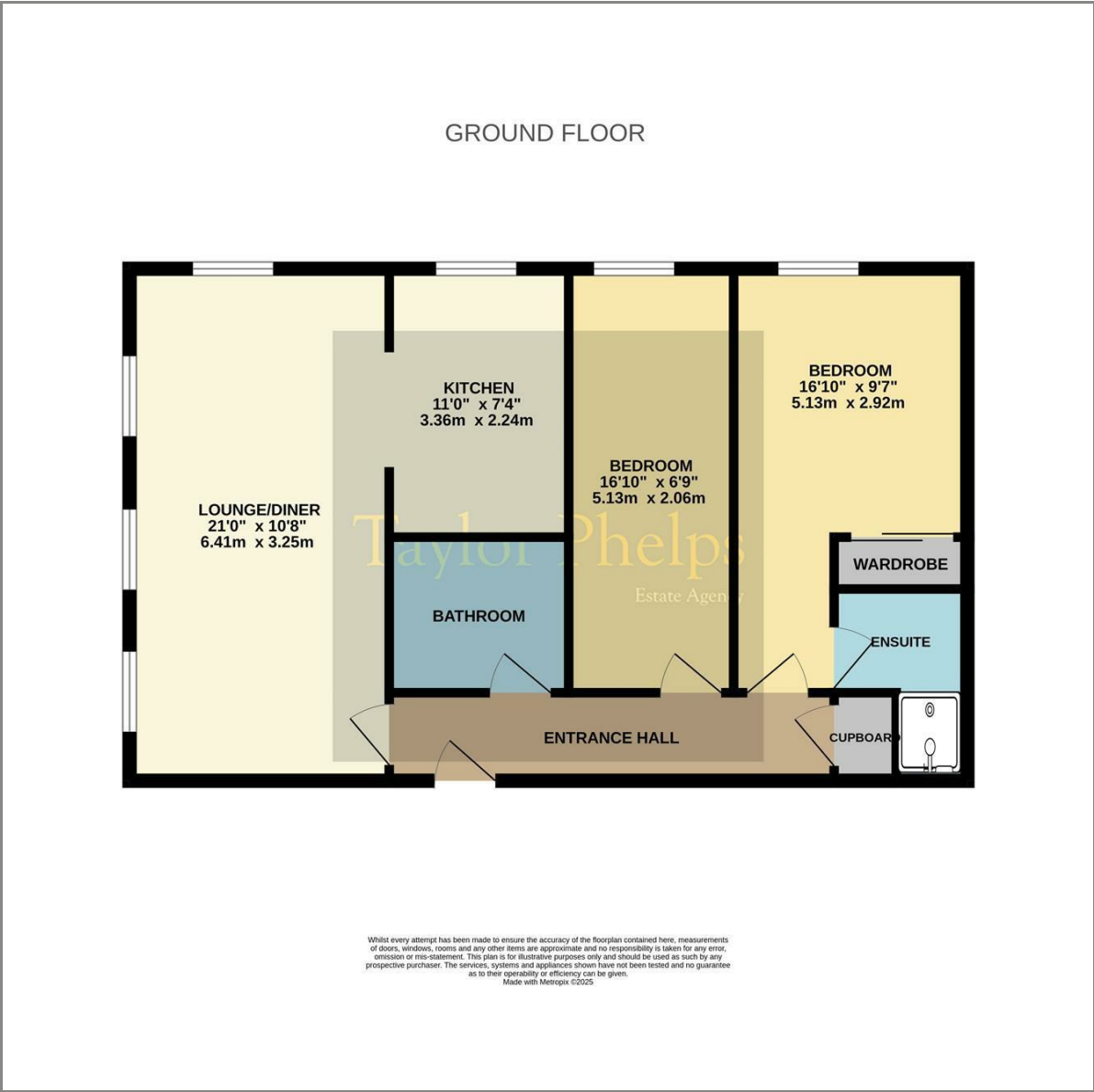




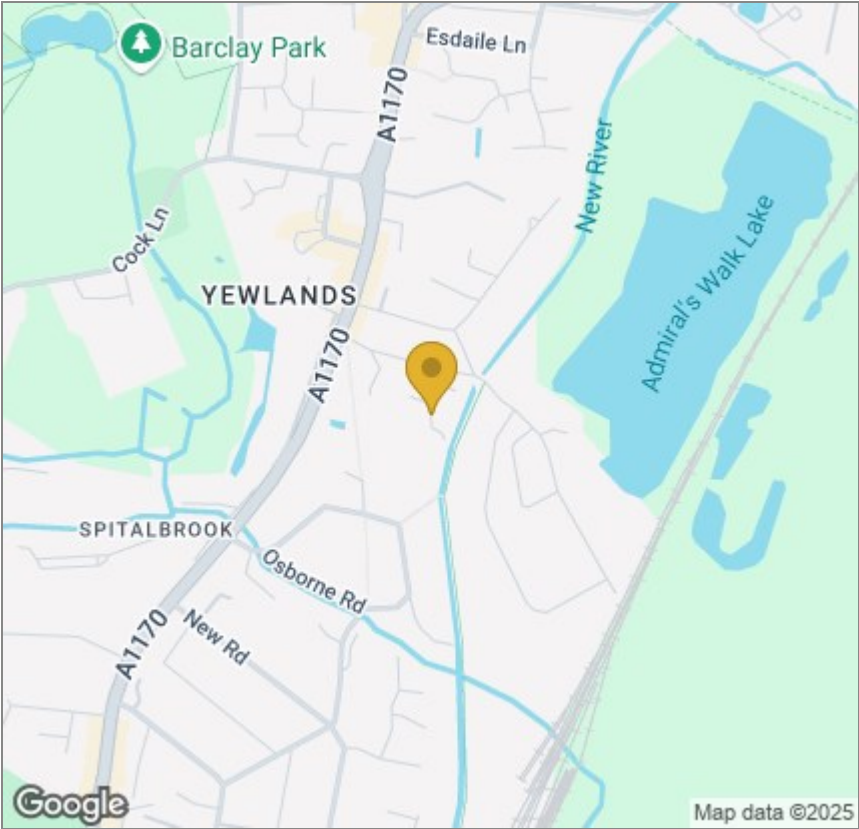




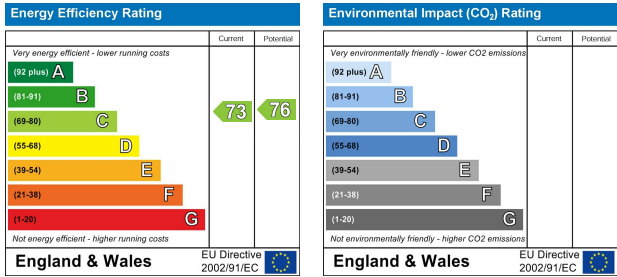
Floor Plan



Area Map



Energy Efficiency Graph



These particulars, whilst believed to be accurate are set out as a general outline only for guidance and do not constitute any part of an offer or contract. Intending purchasers should not rely on them as statements of representation of fact, but must satisfy themselves by inspection or otherwise as to their accuracy. No person in this firms employment has the authority to make or give any representation or warranty in respect of the property.