



High Street, Watton At Stone SG14 3SY

£1,200 per calendar month

Taylor Phelps



2



1

Taylor Phelps

Estate Agency



*Taylor Phelps are pleased to offer this two bedroom first floor maisonette to let positioned within the highly desirable village of Watton at Stone. This property benefits from a modern refitted kitchen and bathroom, brand new carpets throughout, and a garden to the rear. Watton at Stone itself offers a number of village amenities and a train station which serves central London. On-street parking only*





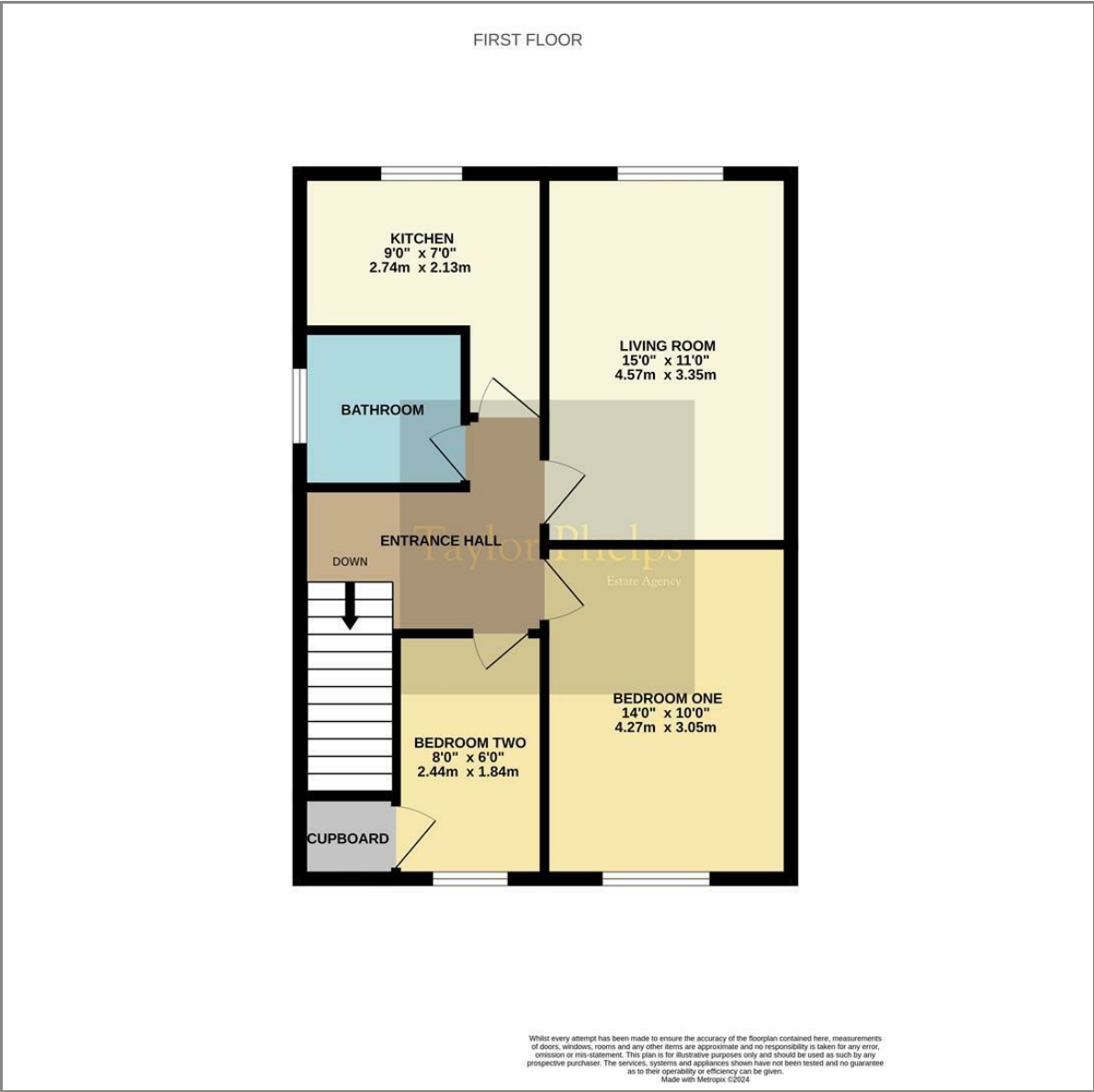








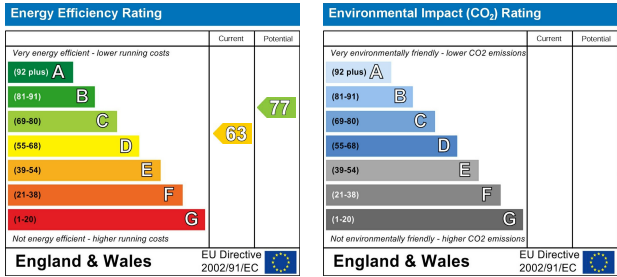
Floor Plan



Area Map



Energy Efficiency Graph



These particulars, whilst believed to be accurate are set out as a general outline only for guidance and do not constitute any part of an offer or contract. Intending purchasers should not rely on them as statements of representation of fact, but must satisfy themselves by inspection or otherwise as to their accuracy. No person in this firms employment has the authority to make or give any representation or warranty in respect of the property.