



Whitley Road, Hoddesdon EN11 0PY

TO LET £1,600



2



1

Taylor Phelps

Estate Agency

Taylor Phelps

Estate Agency





Whitley Road, Hoddesdon EN11 0PY

TO LET £1,600

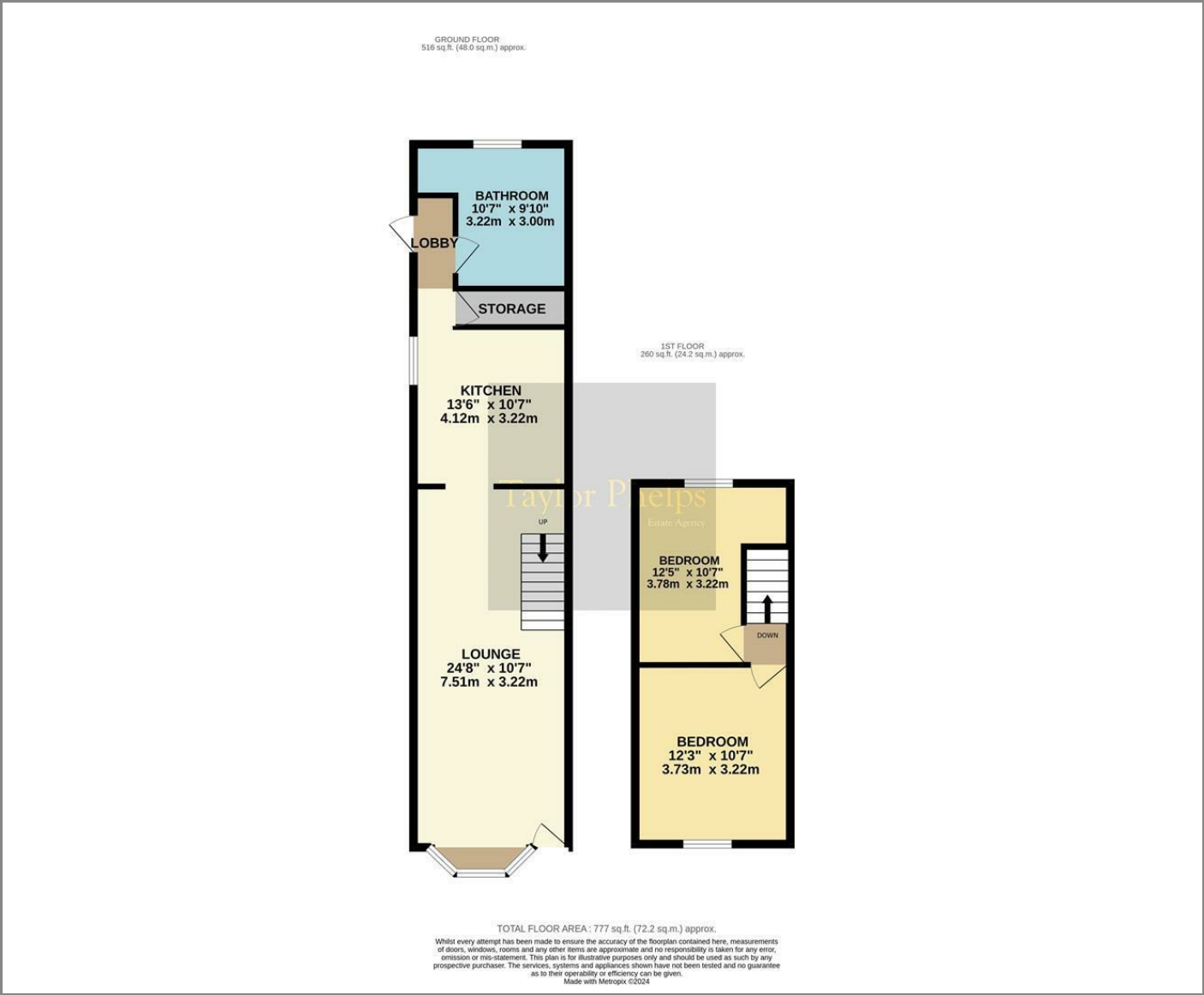
Taylor Phelps are pleased to offer this two bedroom bay fronted Victorian home in Hoddesdon. This property benefits from a high spec refitted kitchen, modern bathroom parking and lengthy rear garden. The town itself offers a number of amenities, good schools and Rye House train station which serves London Liverpool Street.



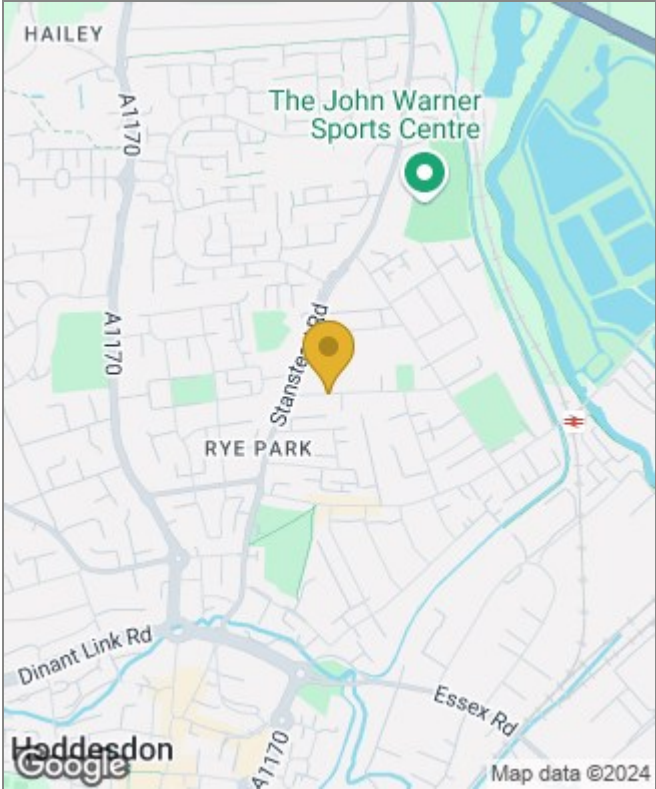




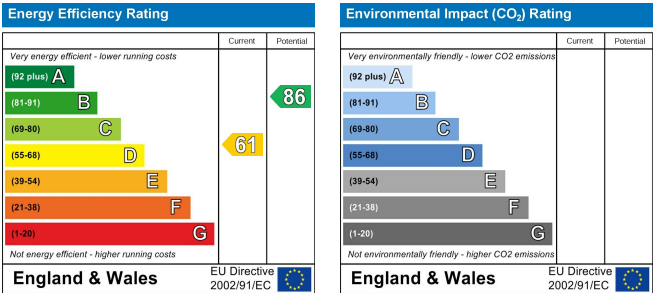
Floor Plans



Area Map



Energy Performance Graph



These particulars, whilst believed to be accurate are set out as a general outline only for guidance and do not constitute any part of an offer or contract. Intending purchasers should not rely on them as statements of representation of fact, but must satisfy themselves by inspection or otherwise as to their accuracy. No person in this firms employment has the authority to make or give any representation or warranty in respect of the property.