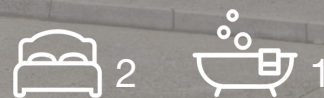




Bourne Close, Ware SG12 0PX



Taylor Phelps

Estate Agency



*Taylor Phelps are pleased to offer this exceptional two bedroom apartment positioned at Bourne Close in Ware close to the high street and train station which serves both Hertford East and London Liverpool Street. This spacious apartment is located on the second / top floor and further benefits from a high spec kitchen, a modern refitted bathroom and stylish décor throughout, residents parking*









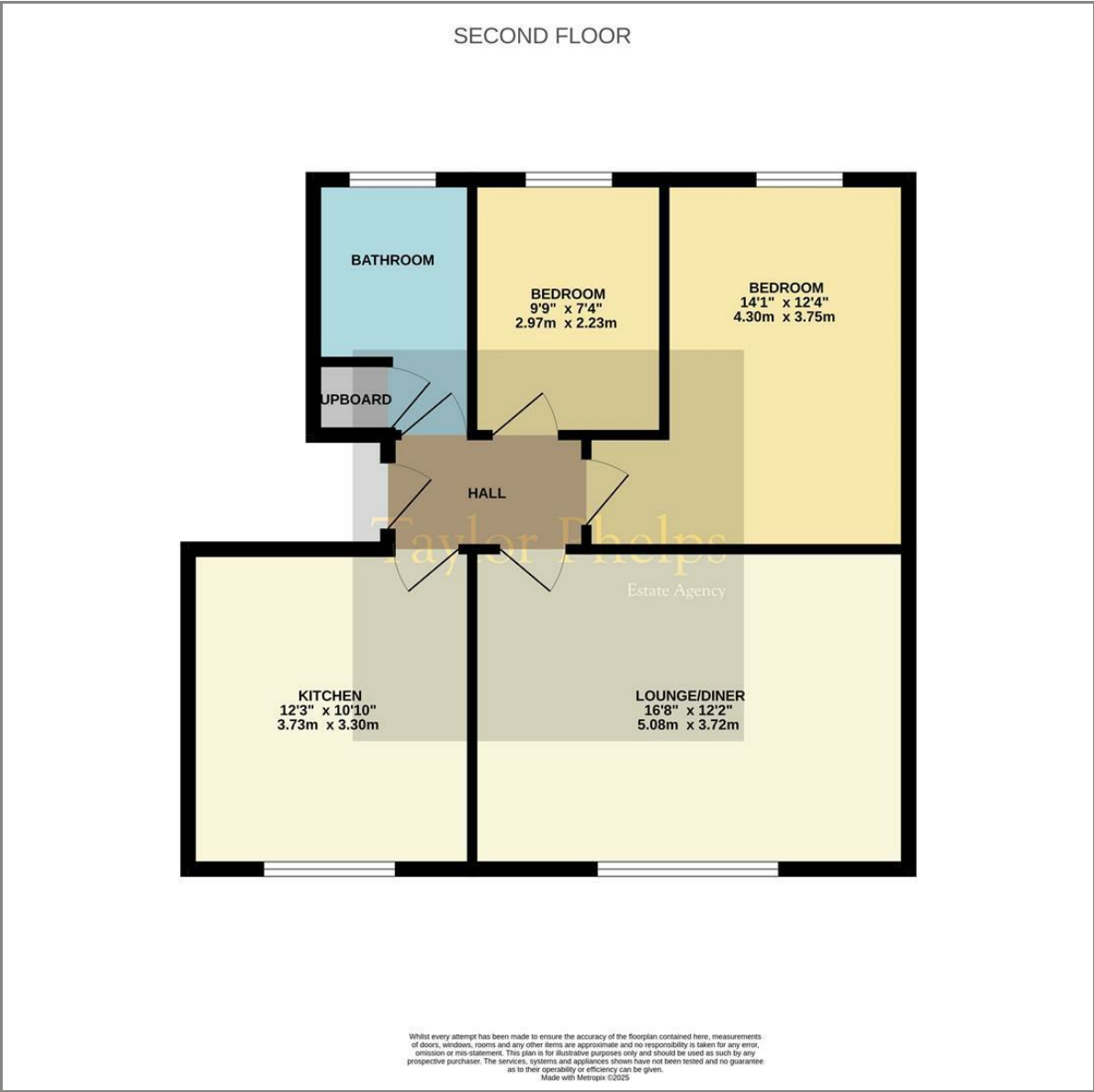




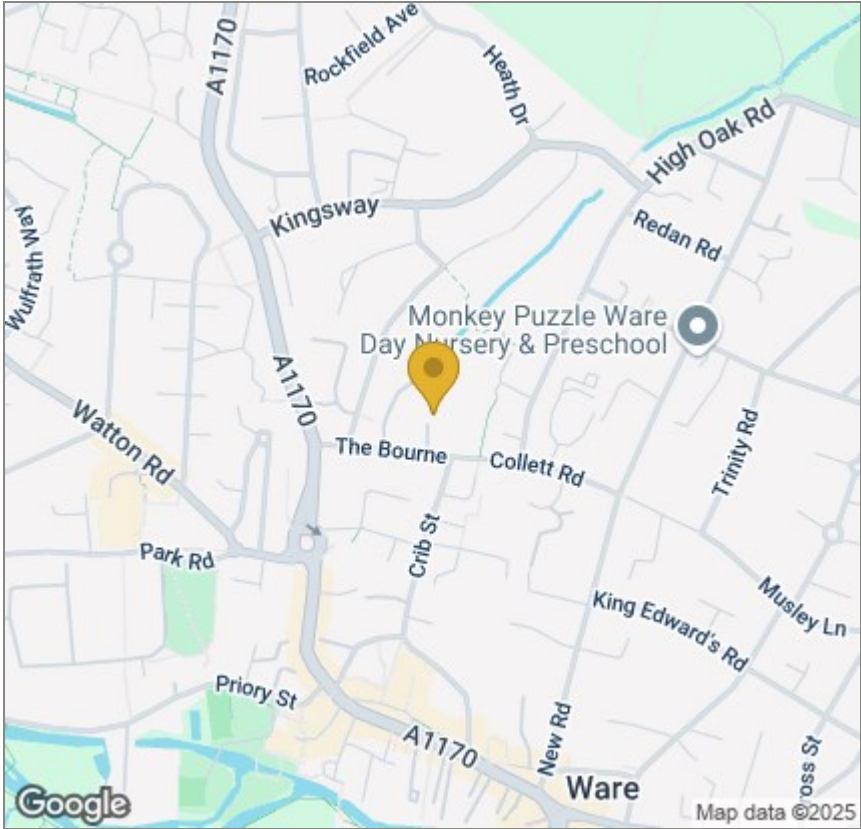




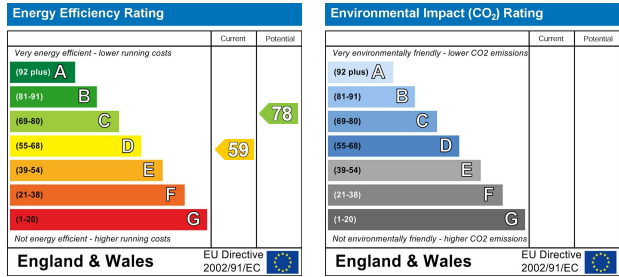
Floor Plan



Area Map



Energy Efficiency Graph



These particulars, whilst believed to be accurate are set out as a general outline only for guidance and do not constitute any part of an offer or contract. Intending purchasers should not rely on them as statements of representation of fact, but must satisfy themselves by inspection or otherwise as to their accuracy. No person in this firms employment has the authority to make or give any representation or warranty in respect of the property.