



Martins Drive, Hertford SG13 7TA

£2,500



3



1

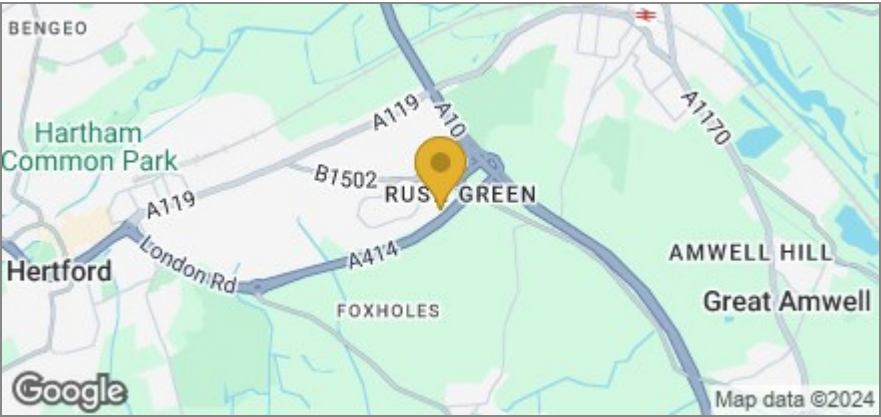
Taylor Phelps

Estate Agency

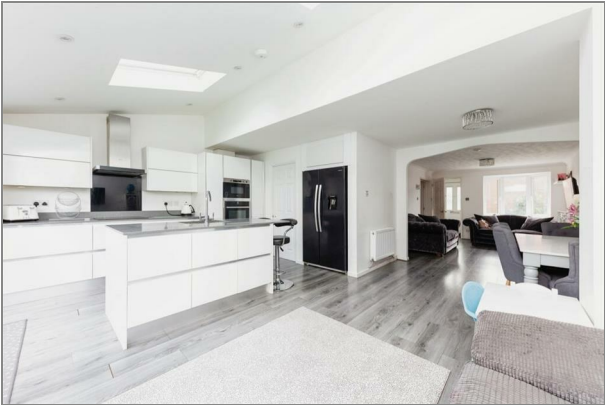
Floor Plan



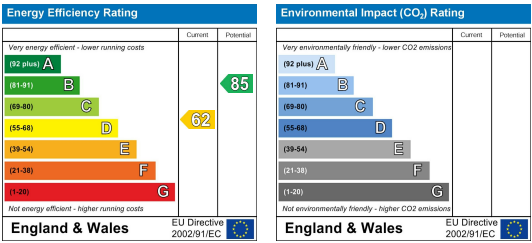
Area Map



LET AGREED - Taylor Phelps are pleased to offer this modern three bedroom detached home positioned in this sought after location in Hertford. The property benefits from a modern open plan kitchen, and double driveway.



Energy Efficiency Graph



These particulars, whilst believed to be accurate are set out as a general outline only for guidance and do not constitute any part of an offer or contract. Intending purchasers should not rely on them as statements of representation of fact, but must satisfy themselves by inspection or otherwise as to their accuracy. No person in this firm's employment has the authority to make or give any representation or warranty in respect of the property.