



Myddleton Road, Ware SG12 9JT

Guide price £650,000



3



1

Taylor Phelps

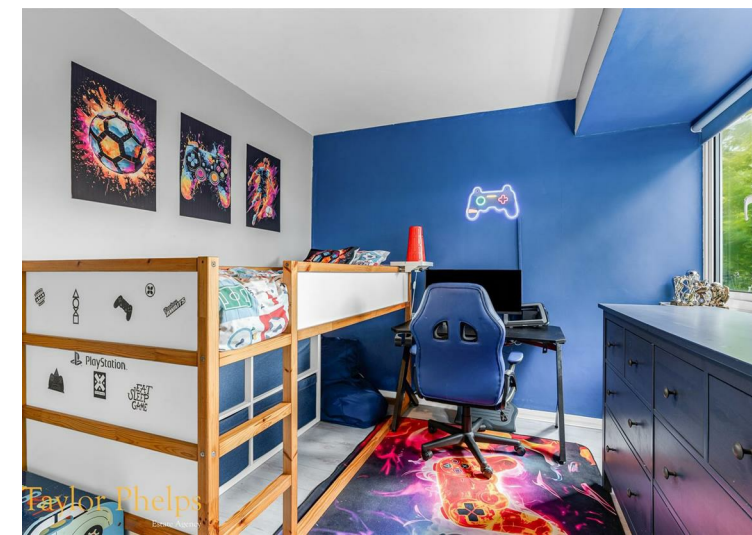
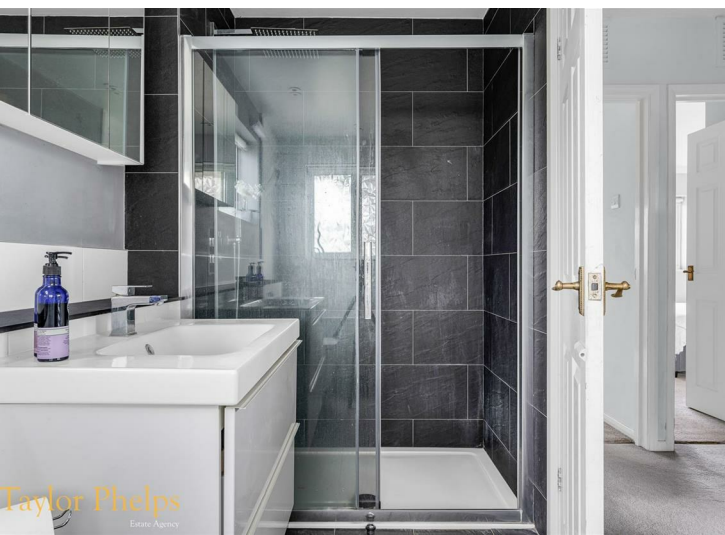
Estate Agency

Taylor Phelps

Estate Agency



*Taylor Phelps are pleased to offer for sale this rarely available home on one of Ware's most desirable roads. The property offers a living room with bi-fold doors opening onto a spacious deck and three double bedrooms. The property benefits from a modern refitted kitchen, a four piece modern refitted bathroom and a utility area in the garage with plumbing for a washing machine. Externally there is a well-stocked rear garden and a driveway with parking for two cars. Located on the favoured south side of Ware, being close to the town centre and the railway station with direct services to London Liverpool Street and London Stratford, additionally within the catchment area for Presdales School.*













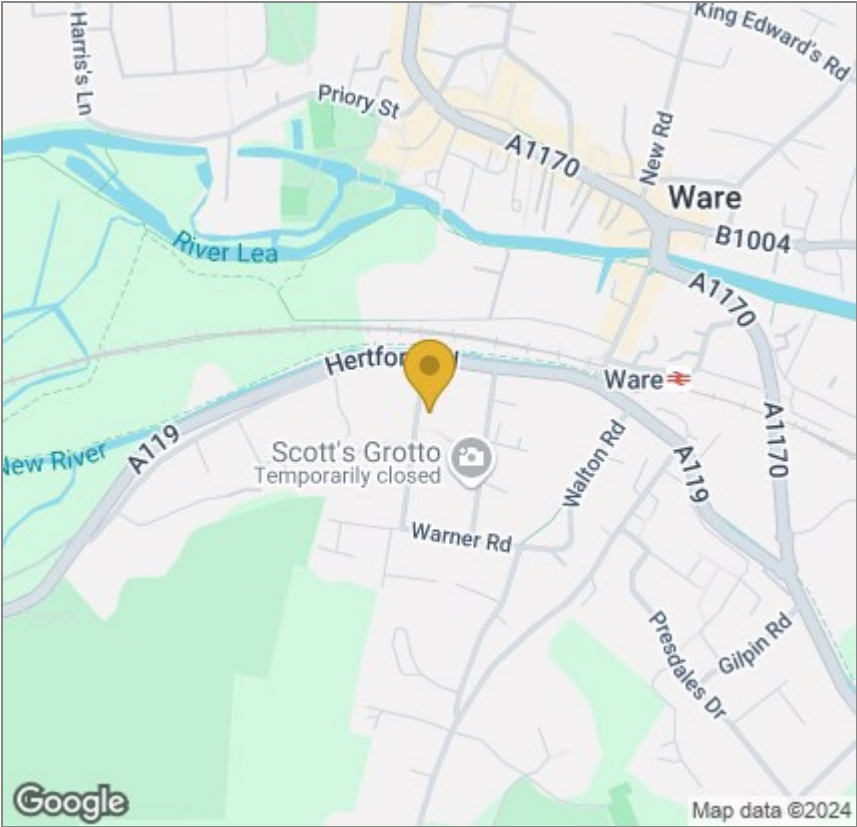




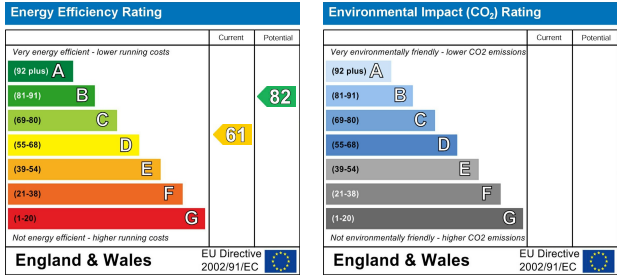
Floor Plan



Area Map



Energy Efficiency Graph



These particulars, whilst believed to be accurate are set out as a general outline only for guidance and do not constitute any part of an offer or contract. Intending purchasers should not rely on them as statements of representation of fact, but must satisfy themselves by inspection or otherwise as to their accuracy. No person in this firms employment has the authority to make or give any representation or warranty in respect of the property.