



Phoenix Court, Ware SG12 7BW

£2,200

Taylor Phelps



3



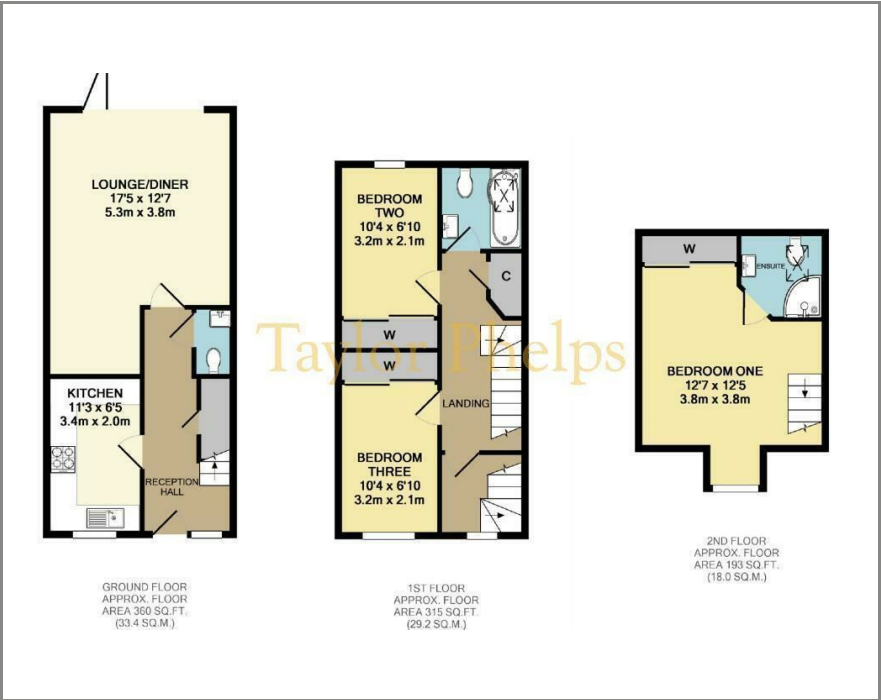
2

Taylor Phelps

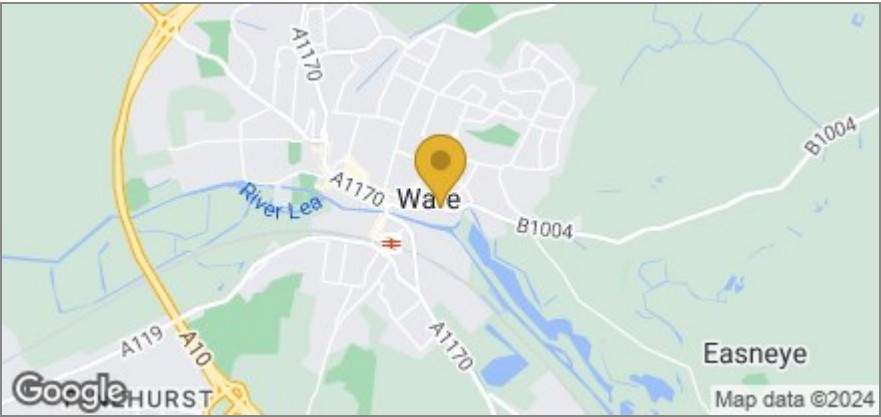
Estate Agency



Floor Plan



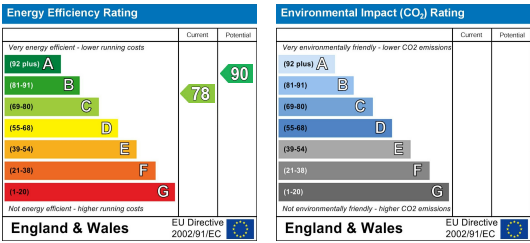
Area Map



Taylor Phelps are pleased to offer this modern three bedroom end terrace house positioned close to Ware high street and station which serves both Hertford East and London Liverpool Street. This house is set over three levels and further benefits from a high spec kitchen, modern bathroom and ensuite, a useful downstairs w/c, off street parking and a larger garden. Available early December



Energy Efficiency Graph



These particulars, whilst believed to be accurate are set out as a general outline only for guidance and do not constitute any part of an offer or contract. Intending purchasers should not rely on them as statements of representation of fact, but must satisfy themselves by inspection or otherwise as to their accuracy. No person in this firm's employment has the authority to make or give any representation or warranty in respect of the property.