



Church House, Church Street, Ware SG12 9EN

Guide price £220,000



1



1

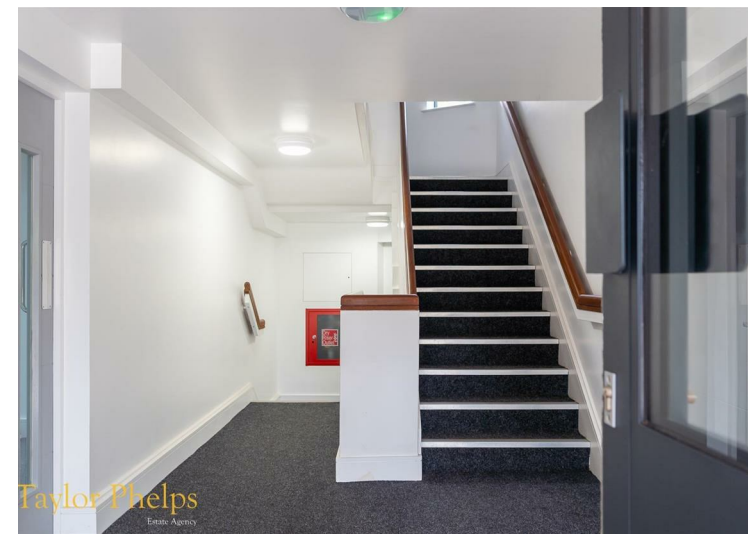
Taylor Phelps

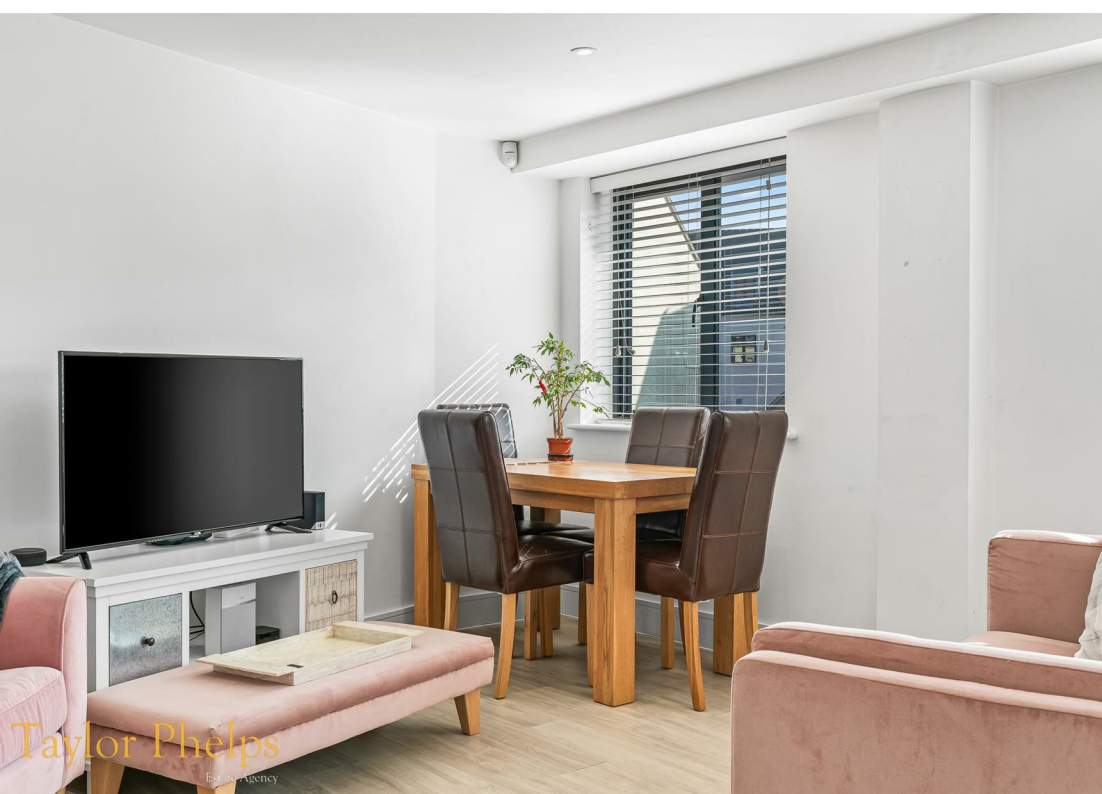
Estate Agency

Taylor Phelps

Estate Agency

Taylor Phelps are delighted to offer this exceptional apartment forming part of this exclusive private development in Ware town centre, close to the high street and station which serves both Hertford East and London Liverpool Street! This modern apartment boasts a high spec open plan kitchen with granite worksurfaces, a luxury bathroom suite, a long lease, and private residents parking! Available Chain Free







Taylor Phelps



Taylor Phelps

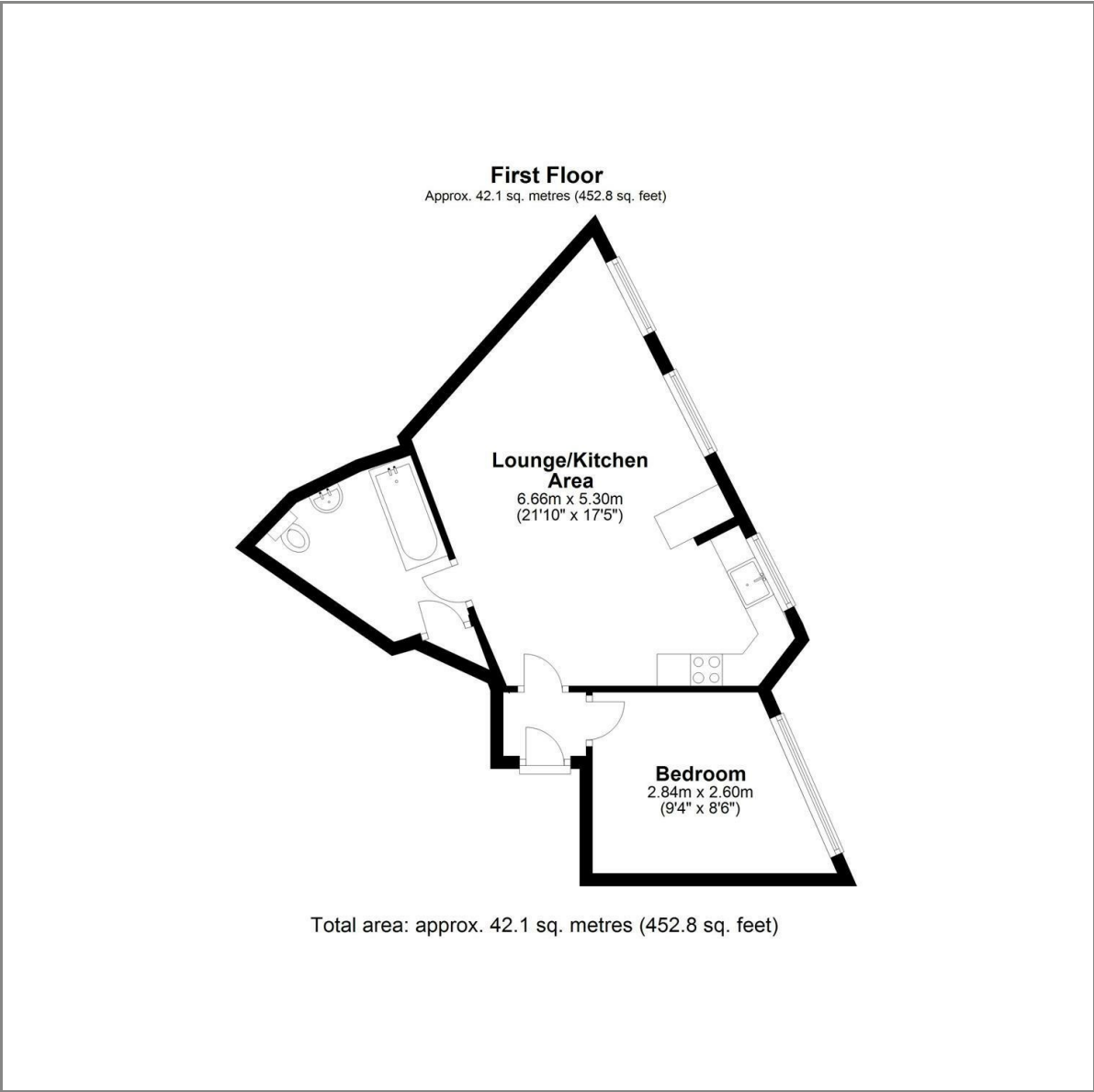


Taylor Phelps
Estate Agency



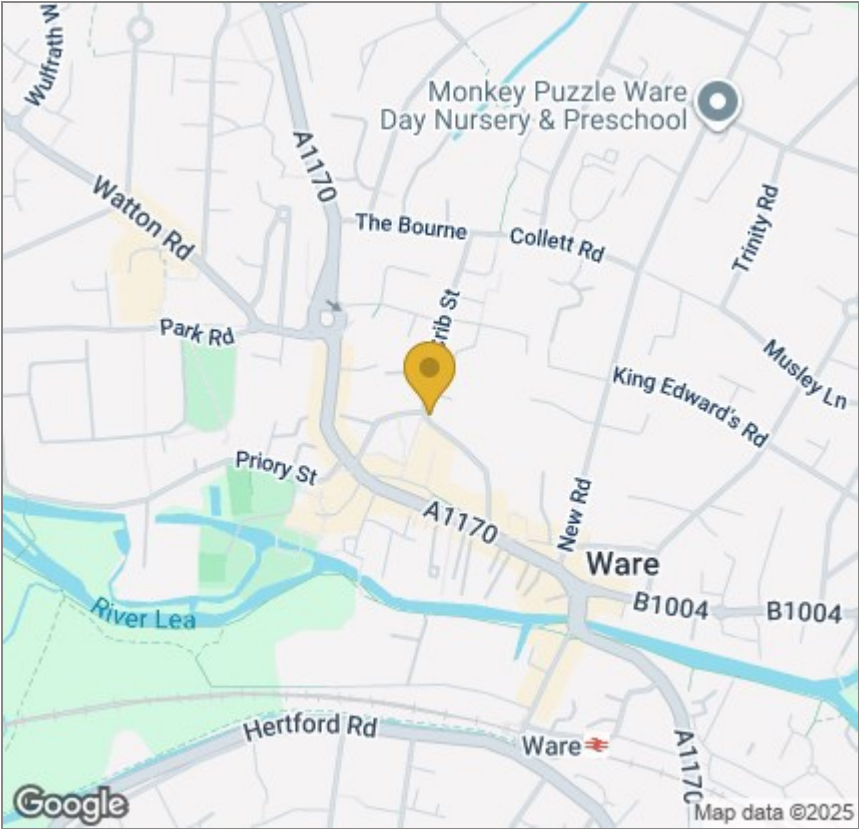
Taylor Phelps
Estate Agency

Floor Plan

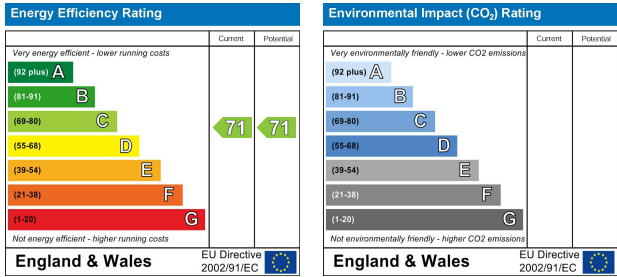


These particulars, whilst believed to be accurate are set out as a general outline only for guidance and do not constitute any part of an offer or contract. Intending purchasers should not rely on them as statements of representation of fact, but must satisfy themselves by inspection or otherwise as to their accuracy. No person in this firms employment has the authority to make or give any representation or warranty in respect of the property.

Area Map



Energy Efficiency Graph



01920 459000

hello@taylorhelps.co.uk

5 Frenchs Yard, Amwell End, Ware, Hertfordshire, SG12 9HP

www.taylorhelps.co.uk

