



Kingsmead Hill, Roydon, CM19 5JG

Guide price £450,000



3



1

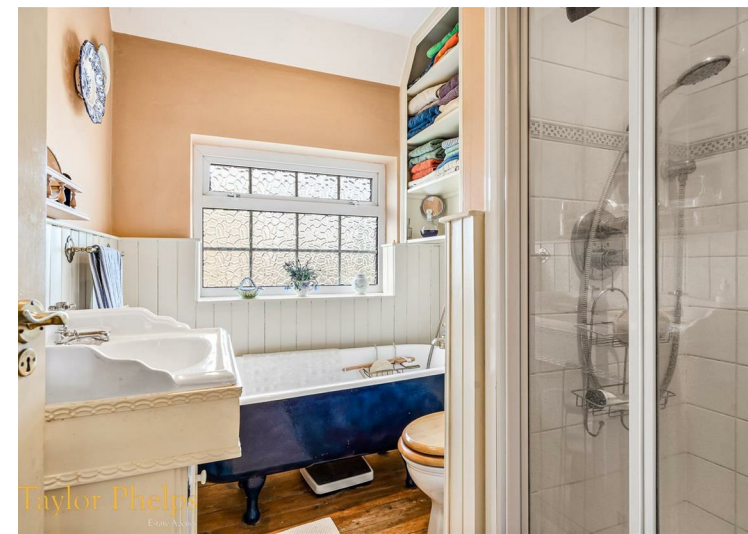
Taylor Phelps

Estate Agency

Estate Agency



*Taylor Phelps are pleased to offer this rarely available three bedroom semi positioned within the ever popular and sought after village of Roydon. This house boasts a fantastic corner plot garden which offers the property huge scope to extend (subject to planning). The village itself has several local amenities, highly regarded schools and Roydon train station which provides links to Stansted Airport and central London.*























Taylor Phelps



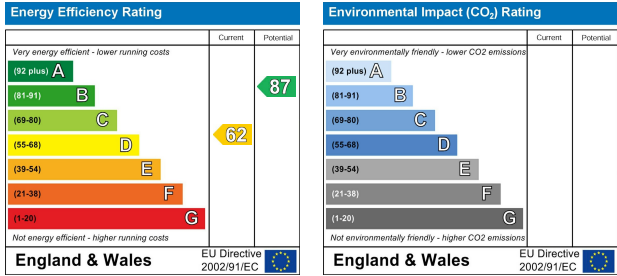
Floor Plan



Area Map



Energy Efficiency Graph



These particulars, whilst believed to be accurate are set out as a general outline only for guidance and do not constitute any part of an offer or contract. Intending purchasers should not rely on them as statements of representation of fact, but must satisfy themselves by inspection or otherwise as to their accuracy. No person in this firms employment has the authority to make or give any representation or warranty in respect of the property.