



Bourne Close, Ware SG12 0PX  
Offers in the region of £335,000



2



1

Taylor Phelps

Estate Agency

Estate Agency



*Taylor Phelps are pleased to offer this rarely available ground floor apartment benefitting from a superb private rear garden and extended lease! This property has two bedrooms, a refitted kitchen and bathroom and spacious lounge diner with direct access to the private garden. Furthermore, this apartment has an extended lease, garage en bloc and is positioned a short distance from the high street and train station. Available Chain Free!*

















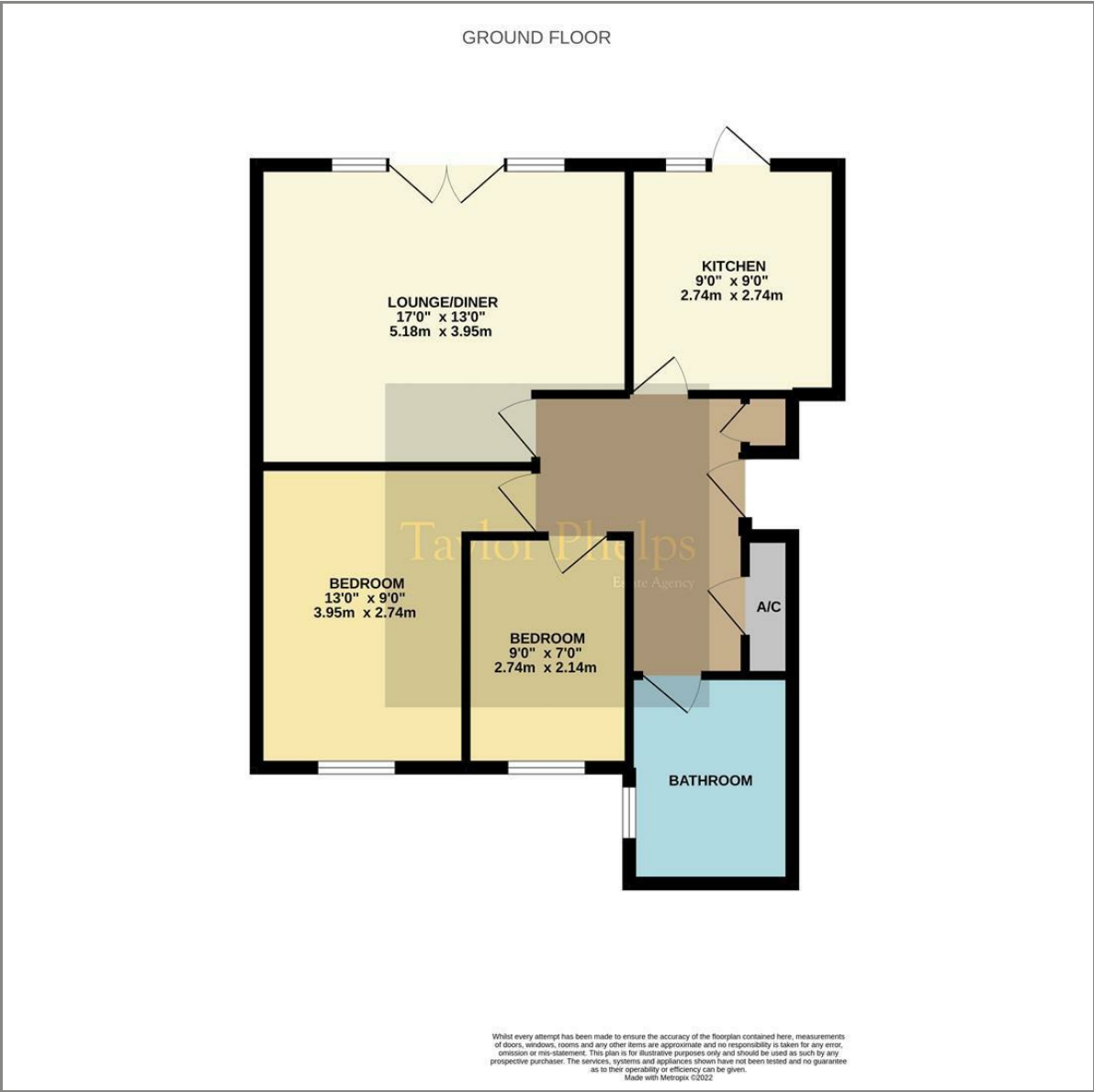


Taylor Phelps

Estate Agency



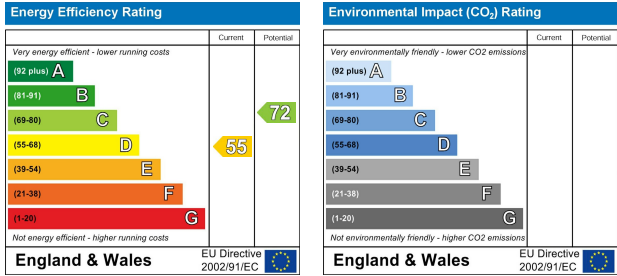
Floor Plan



Area Map



Energy Efficiency Graph



These particulars, whilst believed to be accurate are set out as a general outline only for guidance and do not constitute any part of an offer or contract. Intending purchasers should not rely on them as statements of representation of fact, but must satisfy themselves by inspection or otherwise as to their accuracy. No person in this firms employment has the authority to make or give any representation or warranty in respect of the property.