



Millacres, Ware SG12 9PU

TO LET £1,495



2



2

Taylor Phelps

Estate Agency

Taylor Phelps

Estate Agency





Millacres, Ware SG12 9PU

TO LET £1,495

*Taylor Phelps are delighted to offer this larger than average two bedroom apartment close to Ware high street and station which serves both Hertford East and London Liverpool Street. This fantastic apartment is formerly a three bedroom and now benefits from a spacious kitchen and dining area, double glazed windows, spacious living room, master suite, good sized second bedroom and two high spec bathrooms, loft space and two gated parking spaces!*

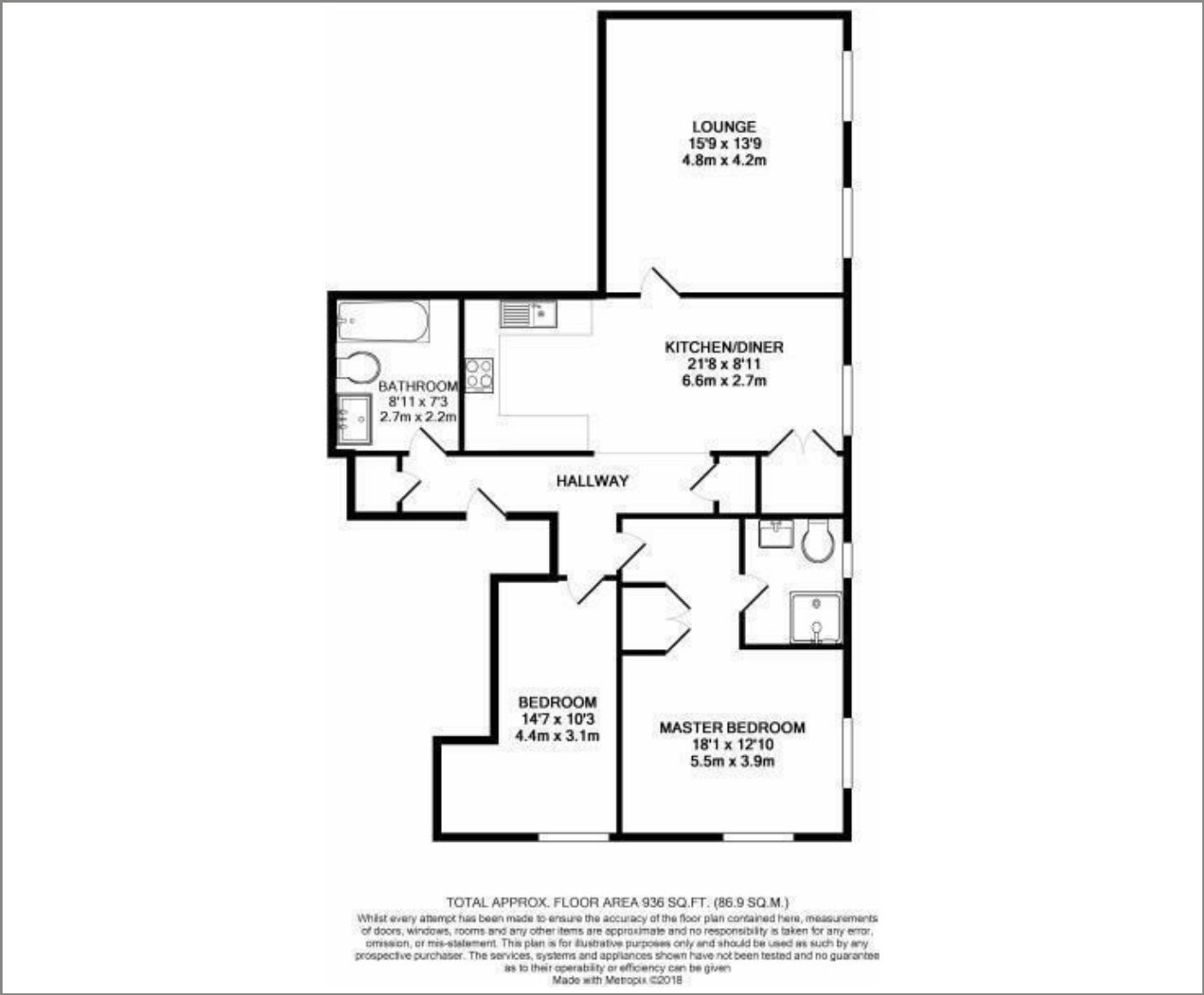




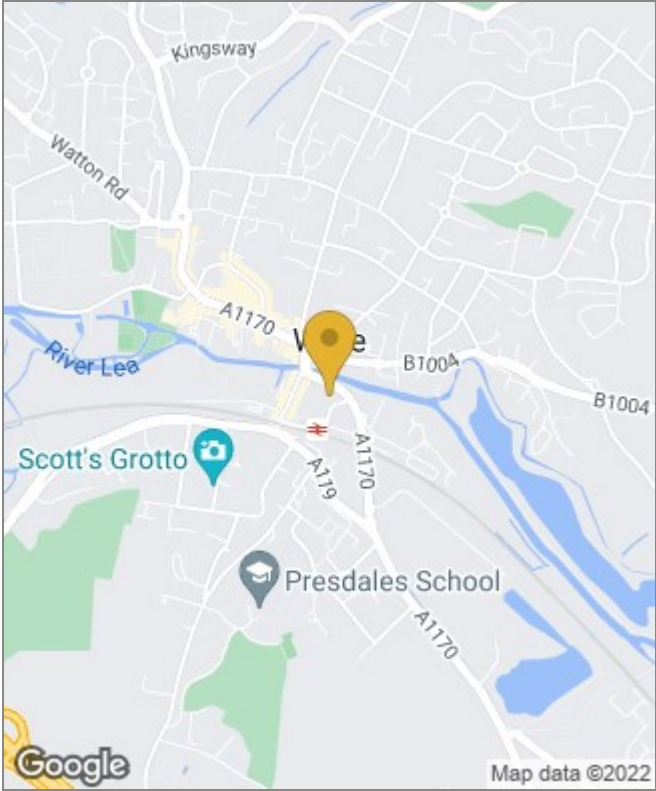
MILLACRES  
(PRIVATE)  
**Taylor Phelps**  
Estate Agency



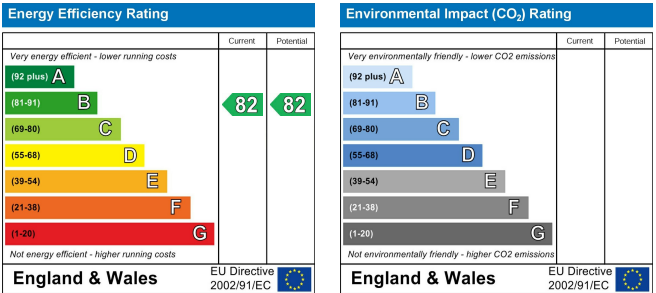
Floor Plans



Area Map



Energy Performance Graph



These particulars, whilst believed to be accurate are set out as a general outline only for guidance and do not constitute any part of an offer or contract. Intending purchasers should not rely on them as statements of representation of fact, but must satisfy themselves by inspection or otherwise as to their accuracy. No person in this firms employment has the authority to make or give any representation or warranty in respect of the property.