



Austen House, Ware SG12 9HW

TO LET £850



Taylor Phelps

Estate Agency

Taylor Phelps

Estate Agency



Taylor Phelps
Estate Agency



Taylor Phelps
Estate Agency



Taylor Phelps
Estate Agency



Taylor Phelps
Estate Agency

Austen House, Ware SG12 9HW

TO LET £850

Taylor Phelps are delighted to offer a collection of Brand New apartments at Austen House in the heart of Ware town centre. Each apartment benefits from a high specification designer kitchen with fully integrated Siemens appliances, luxurious brand new bathroom suites and parking. Externally there are private balconies and a stunning roof terrace for residents to enjoy the use of.

Austen House is positioned conveniently for the high street amenities and Ware train station which serves both Hertford East and London's Liverpool Street.



Taylor Phelps



Taylor Phelps



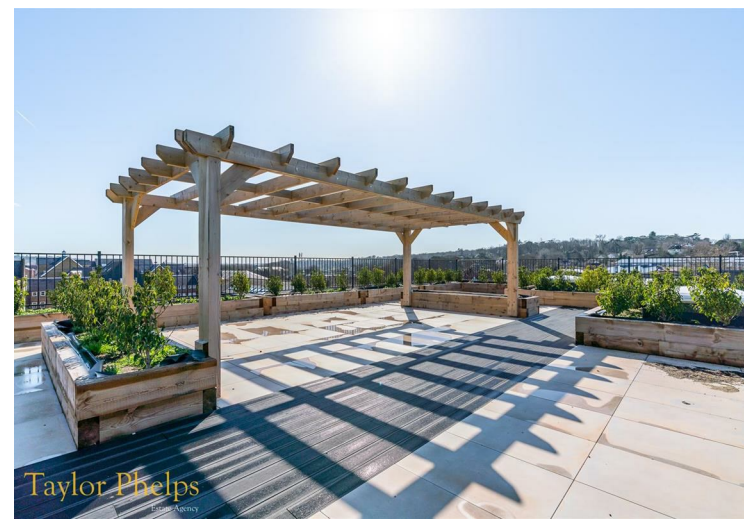
Taylor Phelps



Taylor Phelps
Estate Agency

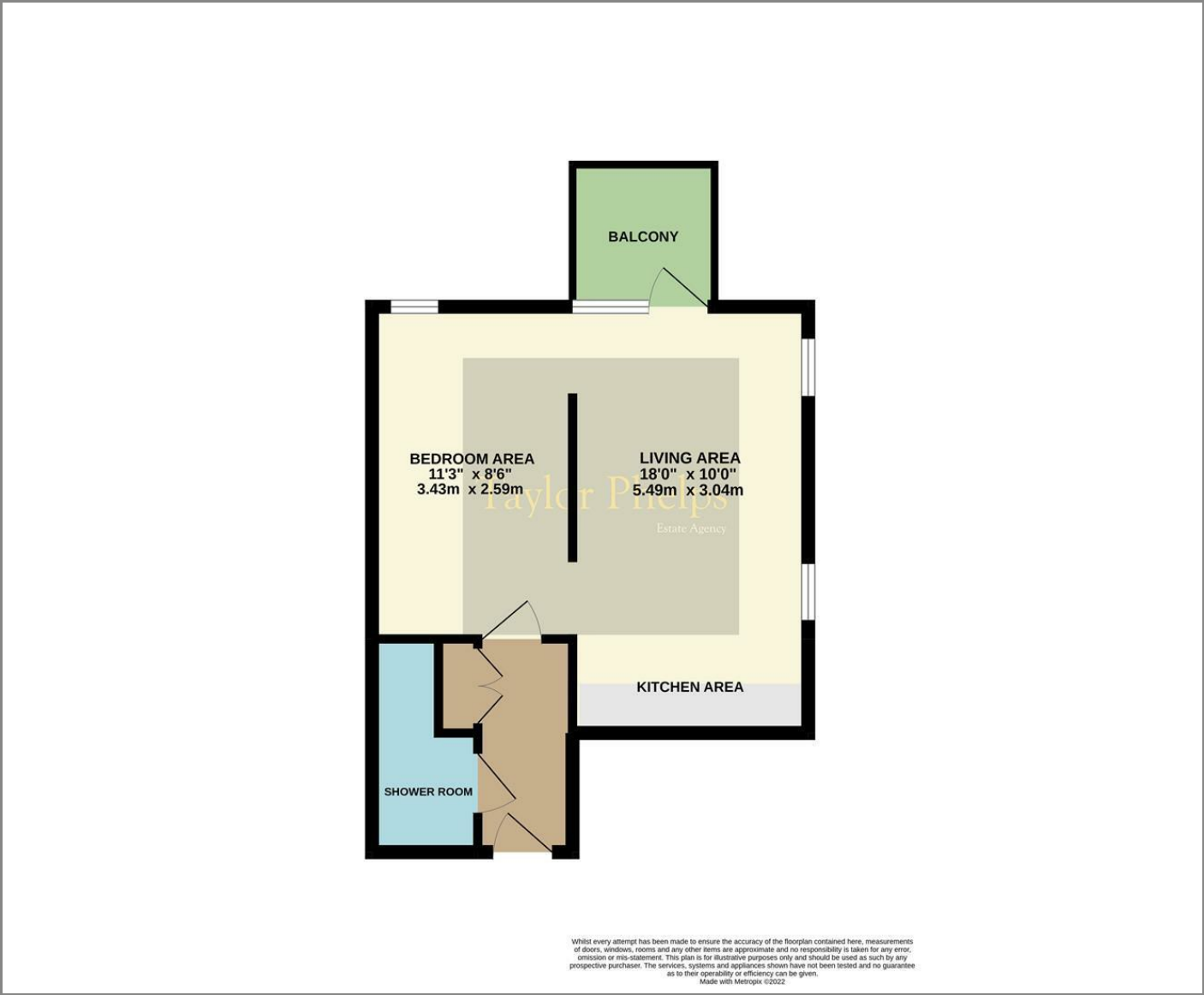


Taylor Phelps

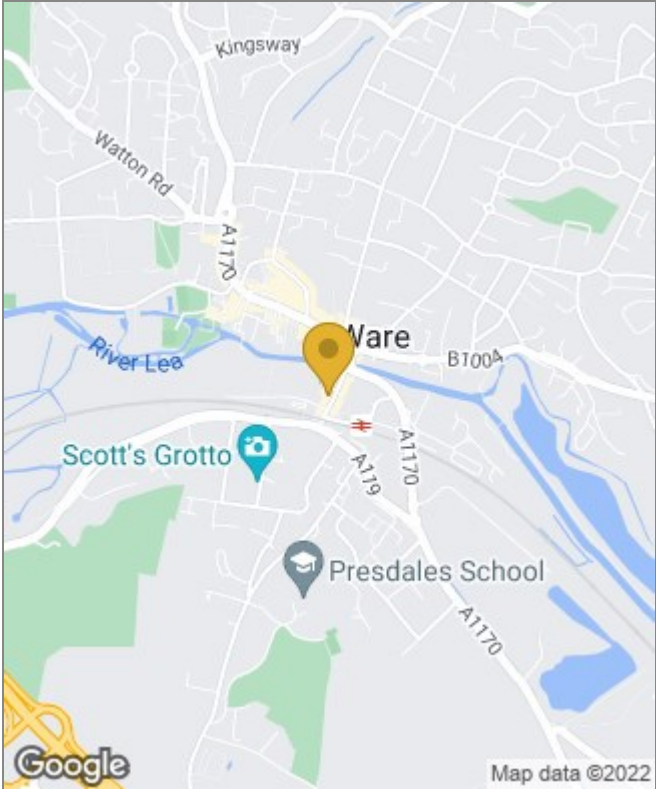


Taylor Phelps

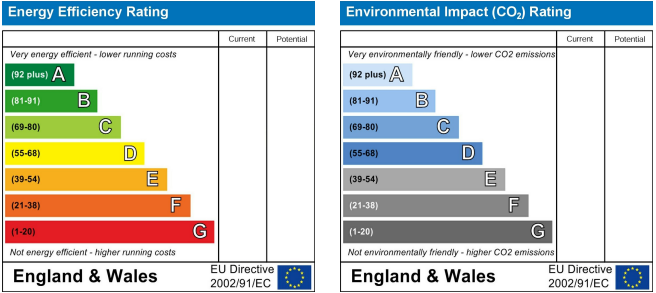
Floor Plans



Area Map



Energy Performance Graph



These particulars, whilst believed to be accurate are set out as a general outline only for guidance and do not constitute any part of an offer or contract. Intending purchasers should not rely on them as statements of representation of fact, but must satisfy themselves by inspection or otherwise as to their accuracy. No person in this firms employment has the authority to make or give any representation or warranty in respect of the property.