



Bourne Close, Ware SG12 0PX

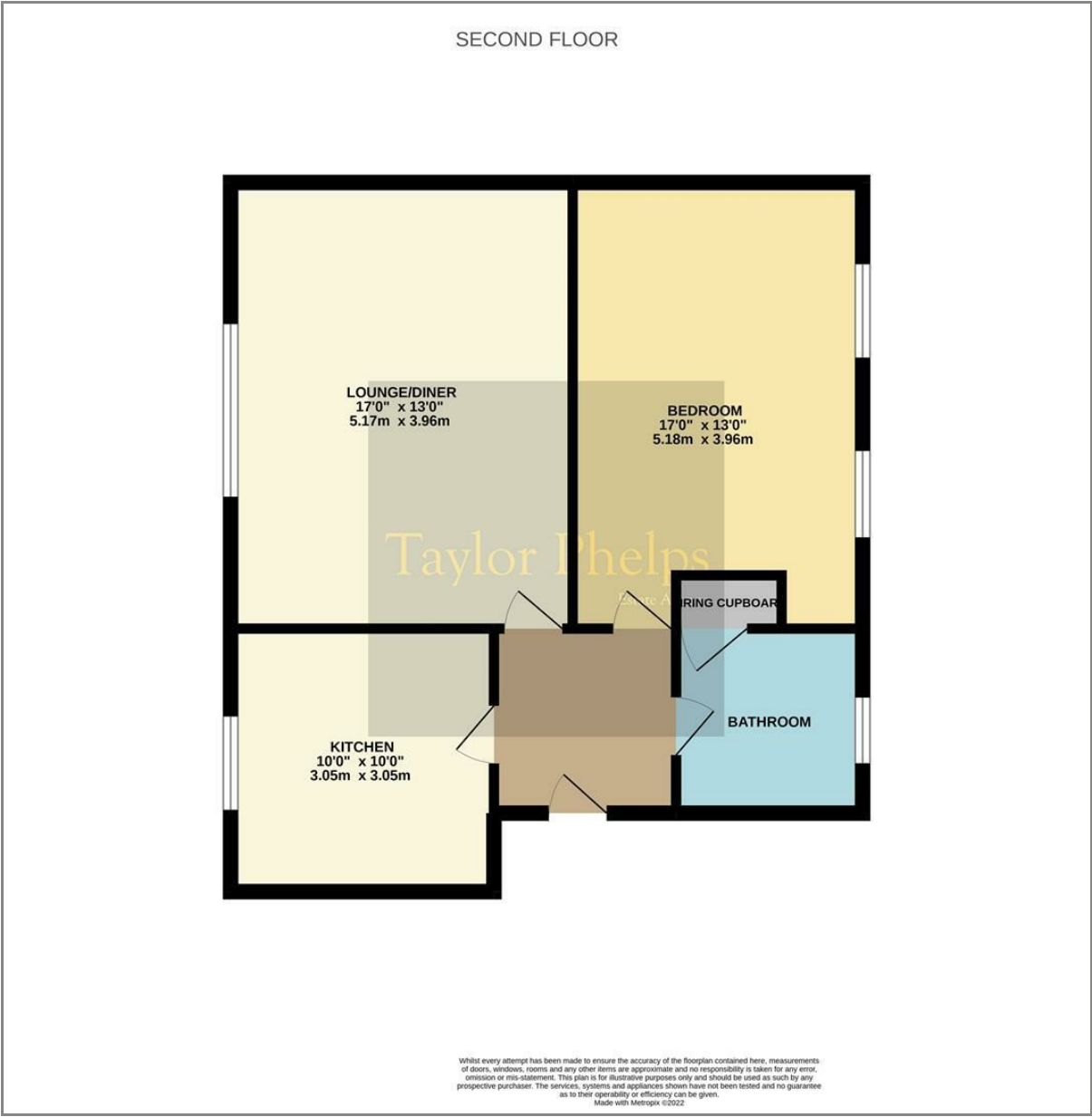
TO LET £1,050

Taylor Phelps  
Estate Agency

Taylor Phelps are pleased to offer this spacious second floor one bedroom apartment close to Ware town centre with its train station which serves both Hertford East and London Liverpool Street! This apartment has an upgraded heating system, new kitchen appliances and benefits from residents parking, access to the communal grounds and is available mid January 2024



Energy Efficiency Rating			Environmental Impact (CO <sub>2</sub> ) Rating		
	Current	Potential		Current	Potential
Very energy efficient - lower running costs					
(92 plus) A			Very environmentally friendly - lower CO <sub>2</sub> emissions		
(81-91) B			(92 plus) A		
(69-80) C			(81-91) B		
(55-68) D			(69-80) C		
(39-54) E			(55-68) D		
(21-38) F			(39-54) E		
(1-20) G			(21-38) F		
Not energy efficient - higher running costs			Not environmentally friendly - higher CO <sub>2</sub> emissions		
England & Wales			England & Wales		
EU Directive 2002/91/EC			EU Directive 2002/91/EC		



These particulars, whilst believed to be accurate are set out as a general outline only for guidance and do not constitute any part of an offer or contract. Intending purchasers should not rely on them as statements of representation of fact, but must satisfy themselves by inspection or otherwise as to their accuracy. No person in this firms employment has the authority to make or give any representation or warranty in respect of the property.