



Glenester Close, Hoddesdon EN11 9LP
TO LET £1,450



3



1

Taylor Phelps

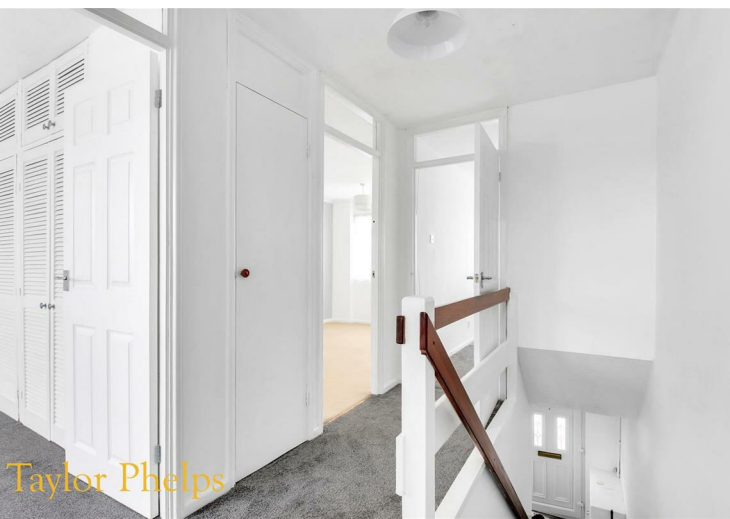
Estate Agency



Taylor Phelps



Taylor Phelps



Taylor Phelps

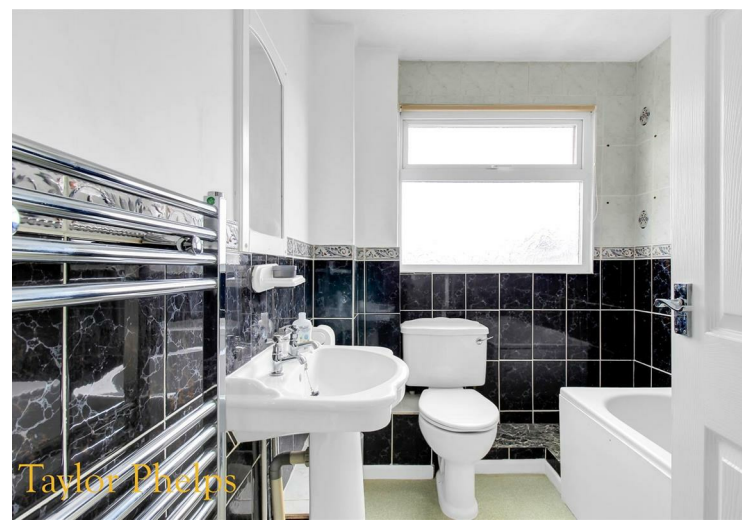
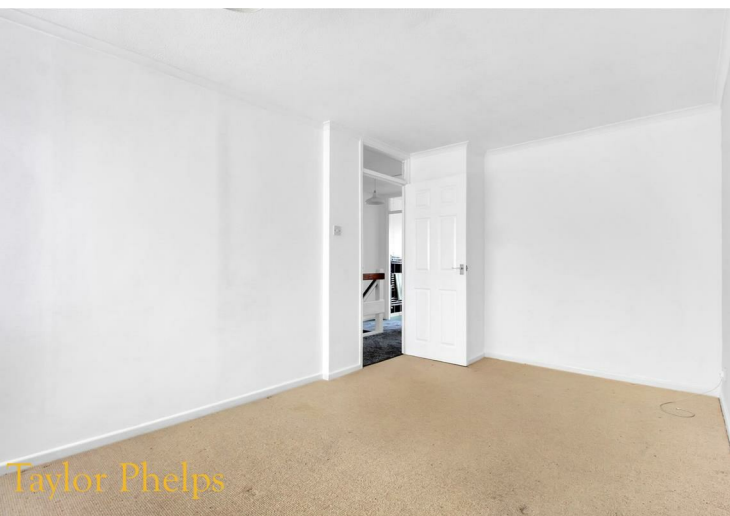


Taylor Phelps

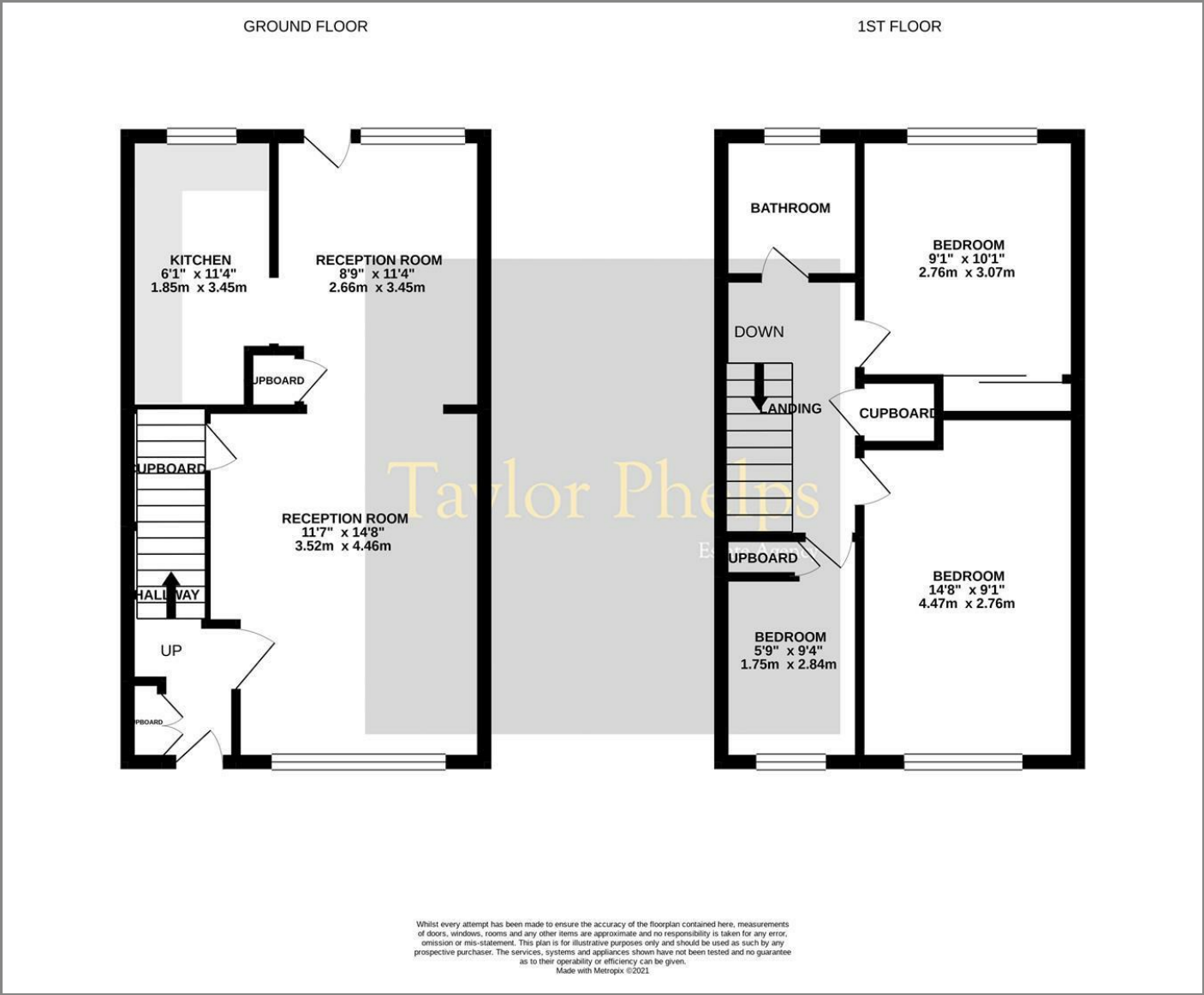
Glenester Close, Hoddesdon EN11 9LP

TO LET £1,450

Taylor Phelps are pleased to offer this three bedroom family home positioned within this popular residential location in Hoddesdon. This property further benefits from its own garage opposite, gas heating and double glazing. Available unfurnished from November 2021



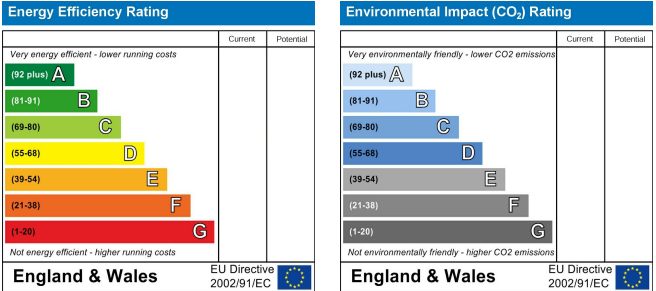
Floor Plans



Area Map



Energy Performance Graph



These particulars, whilst believed to be accurate are set out as a general outline only for guidance and do not constitute any part of an offer or contract. Intending purchasers should not rely on them as statements of representation of fact, but must satisfy themselves by inspection or otherwise as to their accuracy. No person in this firms employment has the authority to make or give any representation or warranty in respect of the property.