

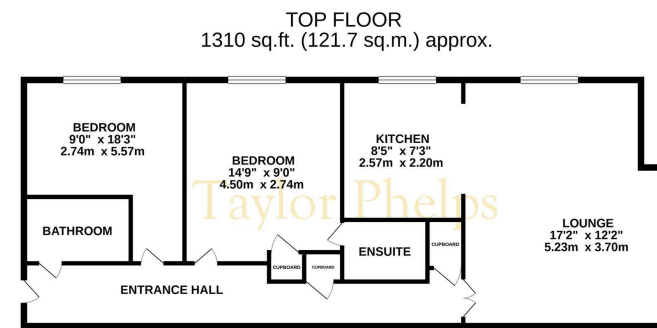
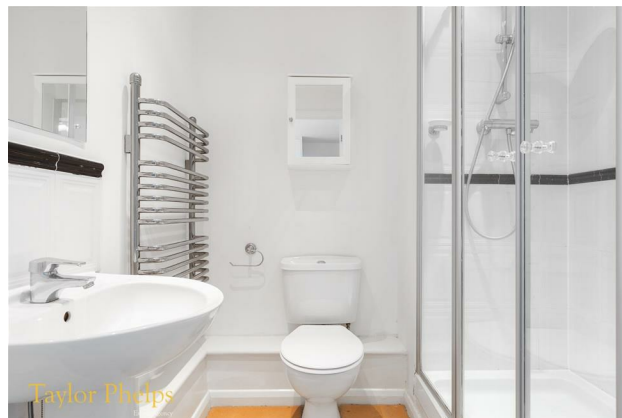


Grandmill Place, High Street, Cheshunt EN8 0AF

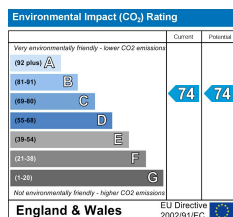
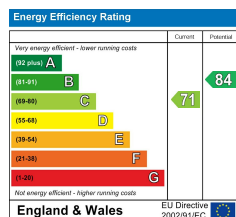
TO LET £1,150

Taylor Phelps  
Estate Agency

Taylor Phelps are pleased to offer this fantastic two bedroom larger style apartment with two high spec bathrooms, a modern kitchen and gated residents parking!



TOTAL FLOOR AREA: 1310 sq.ft. (121.7 sq.m.) approx.  
Whilst every attempt has been made to ensure the accuracy of the floorplan contained here, measurements of plans, sections, views and all other items are approximate and no responsibility is taken for any error, omission or misstatement. This plan is for illustrative purposes only and should be used as such by the prospective purchaser. The location, systems and appliances shown have not been tested and no guarantee as to their operability or efficiency can be given.  
Made with floorplans 1.0.2022



These particulars, whilst believed to be accurate are set out as a general outline only for guidance and do not constitute any part of an offer or contract. Intending purchasers should not rely on them as statements of representation of fact, but must satisfy themselves by inspection or otherwise as to their accuracy. No person in this firm's employment has the authority to make or give any representation or warranty in respect of the property.

01920 459000

hello@taylorphelps.co.uk

5 Frenchs Yard, Amwell End, Ware, Hertfordshire, SG12 9HP

[www.taylorphelps.co.uk](http://www.taylorphelps.co.uk)

