



Broadmeads, Ware SG12 9HT

£1,300



2



1

Taylor Phelps

Estate Agency



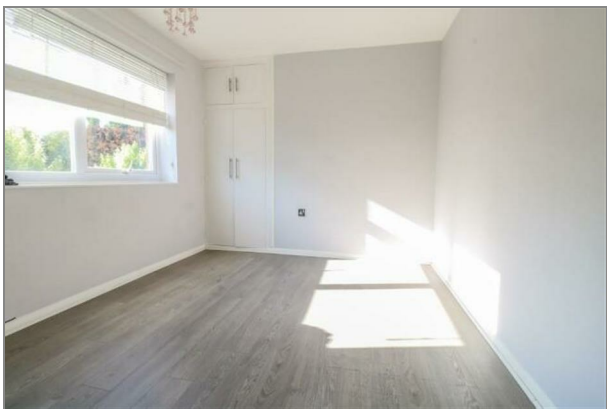
## Floor Plan



Whilst every attempt has been made to ensure the accuracy of the floorplan contained here, measurements of doors, windows, rooms and any other items are approximate and no responsibility is taken for any error, omission or mis-statement. This plan is for illustrative purposes only and should be used as such by any prospective purchaser. The services, systems and appliances shown have not been tested and no guarantee as to their operability or efficiency can be given.

Made with Metropix ©2002

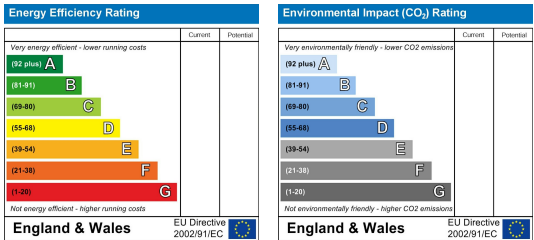
Taylor Phelps are pleased to list this spacious two bedroom apartment positioned within this gated development close to Ware high street and train station which serves both Hertford East and London Liverpool Street! Available mid / end January



## Area Map



## Energy Efficiency Graph



These particulars, whilst believed to be accurate are set out as a general outline only for guidance and do not constitute any part of an offer or contract. Intending purchasers should not rely on them as statements of representation of fact, but must satisfy themselves by inspection or otherwise as to their accuracy. No person in this firm's employment has the authority to make or give any representation or warranty in respect of the property.

01920 459000

hello@taylorphelps.co.uk

5 Frenchs Yard, Amwell End, Ware, Hertfordshire, SG12 9HP

[www.taylorphelps.co.uk](http://www.taylorphelps.co.uk)

rightmove 

**Zoopla.co.uk**

**PRS** Property  
Redress  
Scheme

