



1 Bradley Mews

Bradley Street, Brierley Hill, DY5 4RF

£775



WELL PRESENTED, modern style, end-of-terrace home within walking distance of Russell Hall hospital. Recently refurbished the property offers Open Plan Kitchen / Sitting Room Area, Guests Cloakroom, Two Bedrooms & Bathroom.



Open Plan Kitchen / Lounge

Guest Cloakroom

Bedroom 1

Bedroom 2

Bathroom

Property Description

Well Presented (recently refurbished) 2 Bed End of Terrace Property IDEALLY located within walking distance of Russell Hall hospital

The property offers

Open Plan Kitchen / Lounge

Guest Cloakroom

Bedroom 1

Bedroom 2 / Office

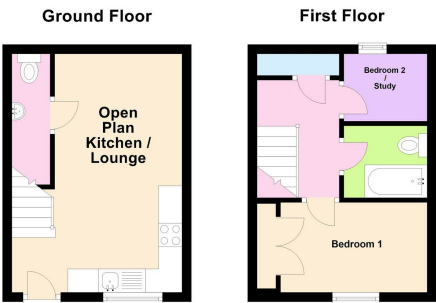
Bathroom

Viewing Recommended

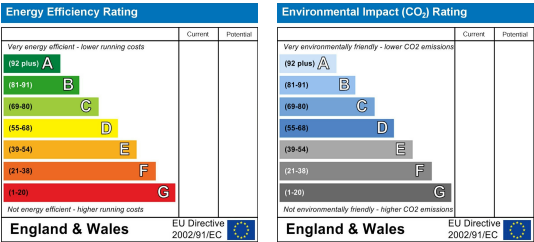
Area Map



Floor Plans



Energy Efficiency Graph



These particulars, whilst believed to be accurate are set out as a general outline only for guidance and do not constitute any part of an offer or contract. Intending purchasers should not rely on them as statements of representation of fact, but must satisfy themselves by inspection or otherwise as to their accuracy. No person in this firms employment has the authority to make or give any representation or warranty in respect of the property.